



Date: May 23, 2007 - v1.0

Firmware: v2.0.16.60

Model: BOX-LNU2UXS



The diagrams and images contained in this manual may not fully represent the product that you are using and are there for illustration purposes only.

Table of Contents

CHAPTER 1 - INTRODUCTION 1

PACKAGE CONTENTS	1
SYSTEM REQUIREMENTS.....	1
<i>Supported Operating Systems:</i>	1
<i>Supported File Systems:</i>	1
<i>Supported Languages:</i>	1
SUPPORTED FILE FORMATS	2
<i>Video File Formats:</i>	2
<i>Video Outputs:</i>	2
<i>Audio File Formats:</i>	2
<i>Audio Outputs:</i>	2
<i>Picture Formats:</i>	2
DETAILED VIEW	3
<i>Front View</i>	3
<i>Rear View</i>	3
BOX OFFICE FEATURES	4
<i>Media Player</i>	4
<i>USB Drive</i>	4
<i>Network Attached Storage</i>	4
QUICK INSTALLATION GUIDE.....	5

CHAPTER 2 - SYSTEM SETUP 6

HDD INSTALLATION	6
HDD SETUP	8
<i>Formatting on a PC</i>	8
<i>Formatting on Mac OS X</i>	8
CREATING THE DIRECTORIES	9
<i>Font Support</i>	9
TV CONNECTION	10
<i>Analogue Audio Setup</i>	11
<i>Digital Audio Setup</i>	11
USB CONNECTION	12
<i>Safe Removal</i>	13
NDAS SETUP.....	14
<i>Driver installation on a PC</i>	14
<i>Driver installation on a Mac</i>	14
<i>The Device ID</i>	14
<i>Registering a new device on a PC</i>	14
<i>Registering a new device on a Mac</i>	15

CHAPTER 3 - UPLOADING FILES 16

<i>USB Connection</i>	16
<i>Ethernet Connection</i>	16

CHAPTER 4 - TV PLAYBACK..... 17

THE REMOTE CONTROL	17
UNIQUE CONTROL KEYS	20
MENU FUNCTIONS	21
<i>Main Menu</i>	21
<i>Movies</i>	21
<i>Music</i>	22
<i>Settings</i>	24
<i>Background Images</i>	26

CHAPTER 5 - NDAS NETWORK DRIVE 27

MOUNTING AND USING YOUR NDAS DISK	27
<i>Mounting the NDAS disk on a PC</i>	27
<i>Mounting the NDAS disk on a Mac</i>	27
<i>Using and sharing it on the network</i>	28
NDAS DEVICE MANAGEMENT ON A PC.....	29
<i>Device Status Modes</i>	30
NDAS UTILITY ON A MAC	30
DRIVER UPGRADE.....	32
PC COMMAND LINE UTILITY	32

CHAPTER 6 - TECHNICAL SPECIFICATIONS 33

FILE FORMATS	33
<i>.ISO</i>	33
<i>XviD</i>	34
SPECIFICATIONS	35
PACKAGE CONTENTS	36
SAFETY INFORMATION.....	37
<i>Power on/off precautions</i>	37
<i>Location and placing precautions</i>	37
<i>Electricity and power plug</i>	37
<i>Cables</i>	37

CHAPTER 7 - APPENDIX..... - 38 -

FAQ	- 38 -
TECHNICAL QUESTIONS	- 39 -
ABOUT THIS MANUAL	- 39 -

Chapter 1 - Introduction

The Box Office is a digital multimedia player as well as data storage solution that you can connect to any PC or Mac. Transfer your favourite content such as movies, music and pictures via USB 2.0 High Speed or via the local network to the media player. Once the files have been stored on the Box Office, convenient playback of the digital media on any standard TV is guaranteed! Enjoy your favourite films on the big screen!

Product Dimensions: 16.5cm x 16.5cm x 5cm
 6.5in x 6.5in x 2in

Package Contents

- Box Office Media Player (no HDD included)
- Power Adapter;
 Input 100-240V, Output +12V/2A
- Infrared remote control
- USB 2.0 cable, Ethernet cable
- SCART adapter and AV cables (Composite RCA/S-Video and SPDIF digital audio cable)
- Manual, utility CD

Note: Package contents may vary depending on vendor & product version.

System Requirements

- Computer with internet browser, network access and USB connection for setup
- Switch or Router with one free Ethernet port for the Box Office
- One 3.5" IDE hard drive to be installed into the Box Office media player

Supported Operating Systems:

- PC running Win2000, WinXP or Windows Vista
- Mac running Mac OS 10.2 or above

Supported File Systems:

- FAT32 for both Mac and Windows
- NTFS for Windows only
- HFS+ for Mac only

Supported Languages:

- English, French, German, Italian, Spanish, Dutch, Swedish, Hungarian, Czech, Polish, Greek, Turkish
- Requires external font: Traditional Chinese, Simplified Chinese, Japanese, Thai, Korean

Note: For external text subtitles it supports any language as long as the required font is installed on the hard drive.

Supported File Formats

Video File Formats:

- MPEG-1 (AVI, MPG)
- MPEG-2 (AVI, VOB, ISO)
- MPEG-4 (AVI, XviD)

Note: Does not support high definition media files (HD) such as WMV9 and does not support GMC or Qpel.

Video Outputs:

- Composite Video (NTSC/PAL, Composite RCA, S-Video Mini-Din)
- Component Video (Analogue YPbPr, progressive or interlaced, scalable up to 1280x720p or 1920x1080i)
- SCART RGB
- VGA (1024x768)

Audio File Formats:

- WAV, MP3, MPEG-4 (AAC), WMA, AC3, OGG

Note: Does not support AAC files from Apple's media player iTunes.

Audio Outputs:

- Dual stereo analogue audio
- Optical SPDIF digital audio (supports compressed Dolby Digital 5.1 and DTS pass through)

Picture Formats:

- JPG baseline and progressive up to 8 mega pixel

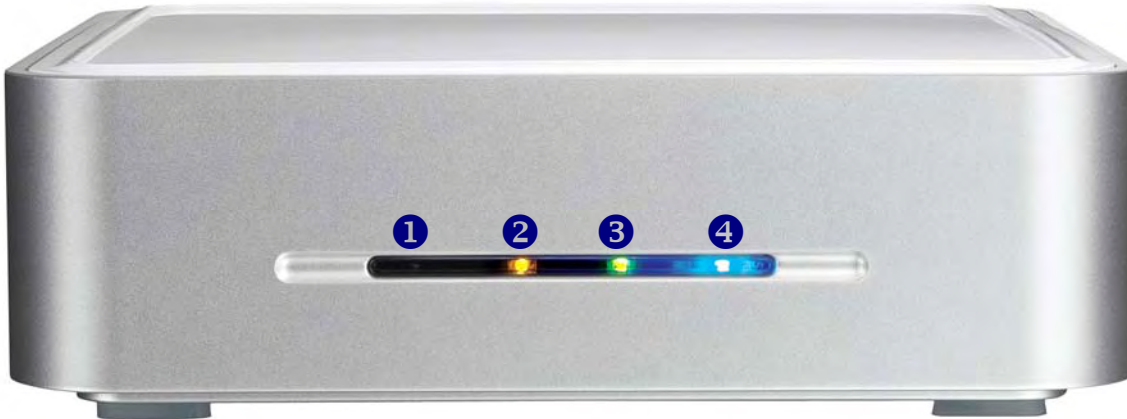
The Box Office is not designed or intended to, and may not be used to violate any copyrights or other IP (Intellectual Property) rights. Each user of the Box Office may only use it in connection with materials legally owned by or licensed to the user and only extend such ownership or license rights that will permit such use.

MS-DOS, Microsoft, Windows 98/ME/2000/XP/Vista are trademarks of Microsoft Corporation. Apple Macintosh and Mac are trademarks of Apple Computer. Dolby® and Dolby® Digital are registered trademarks of Dolby Laboratories, Inc. All other third party brands and names are the property of their respective owners.

Detailed View

For a detailed description on how each of these ports and buttons work, please refer to the following chapters.

Front View



1. IR receiver
Infrared receiver for remote control signal
2. LAN LED (yellow)
ON/Blinking = LINK/LAN connected
3. System LED (green)
ON = Standby (media player), Blinking = IR command received
4. Power LED (blue)
ON = Power ON, Blinking = Data Access

Rear View



- | | |
|--------------------------------|--|
| 1. ON/OFF switch | 5. USB 2.0 High Speed connection |
| 2. Power receptacle | 6. Ethernet port (RJ-45 100Base-TX Auto) |
| 3. Analogue audio/video output | 7. TV/PC switch for player/storage mode |
| 4. Digital audio output | |

Box Office Features

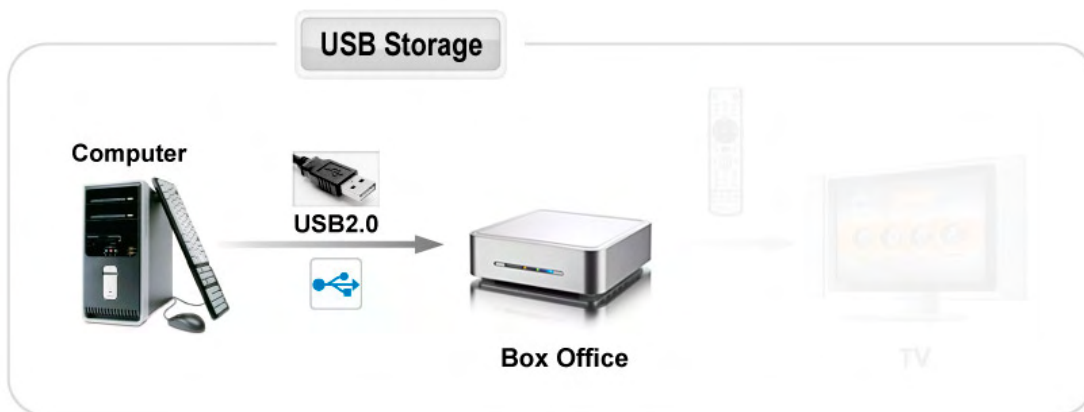
Media Player

Connected to the TV or any other display with the corresponding video inputs, it can playback media files such as videos, music and photos directly from its hard drive.



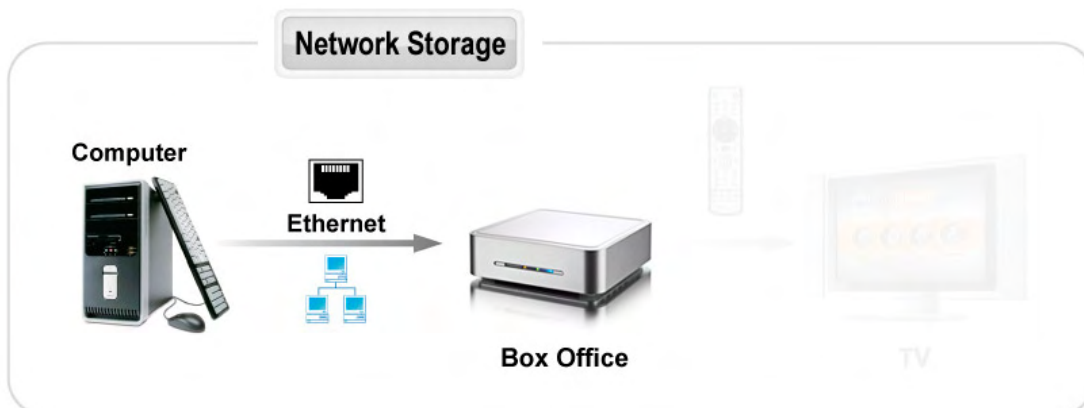
USB Drive

With its USB 2.0 High Speed connection, the Box Office can be used as standard mass storage class device. Transfer files between different computers and platforms, expand your storage capacity or use it to backup your data in case of data loss.



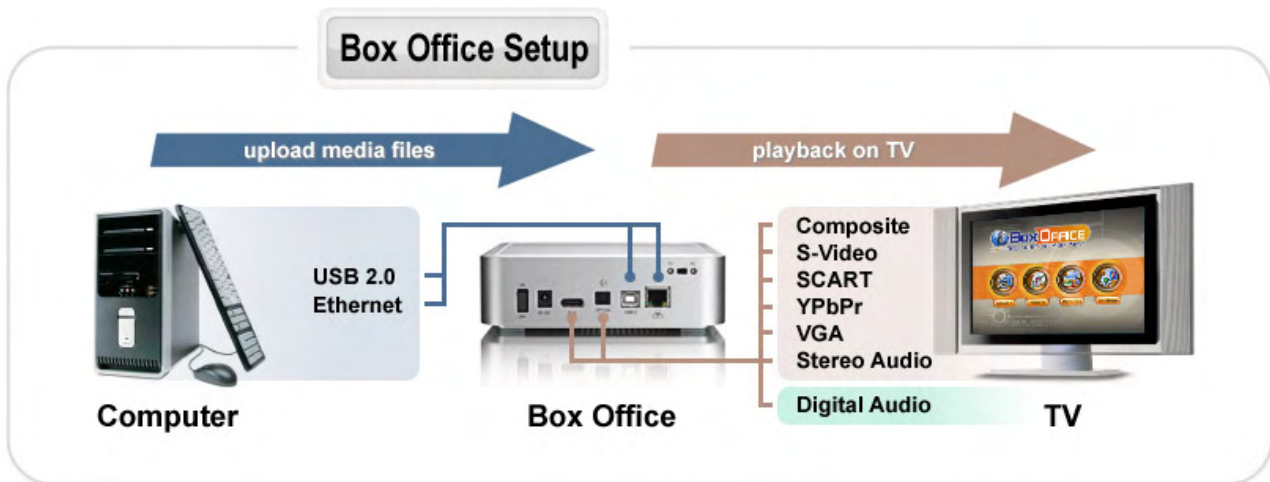
Network Attached Storage

Easily transfer media files from any computer on the local network to the Box Office through the Ethernet connection. The network connection offers convenient data management for the media files and file sharing with other users on the home network.



Quick Installation Guide

Following is a quick installation guide to get you up and running. In a few steps, we will show you how to set up the hard drive, fill it with some media files and hook it up to your TV system for immediate playback.



1. Open the enclosure, install and connect your hard drive but be careful not to damage any pins or components! Jumper settings of your hard drive should be set to Master. Mount the hard drive with the supplied screws and finish the assembly.
2. Set the switch on the Box Office to PC, connect the USB cable to your computer, connect the power supply to the wall socket and turn on the power.
3. Create a single primary partition and format the drive using the FAT32, NTFS or HFS+ file system, depending on your Operating System and personal preferences.
4. Create four (4) empty folders in the root directory, named exactly as follows: Firmware, Movies, Music and Pictures.
5. Copy your media files to the hard drive. Store videos inside the Movies folder, music clips inside the Music folder and images inside the Pictures folder.
6. Remove the device from your computer and disconnect the USB cable.
7. Connect the AV cable to your TV, set the switch on the Box Office to TV and turn on the power.
8. Use the remote control to access your files and start playback.

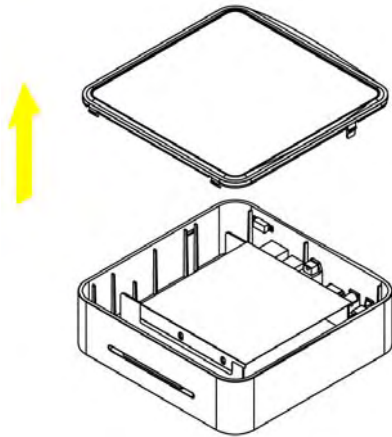
Note: If you do not see anything on your TV screen, make sure you have selected the correct TV channel but if you still only see a black screen, press the "TV out" button on your Box Office remote control to toggle between the different TV formats until you see the main screen. Once you have found the right video output, go to Settings, select the proper output and press the HOME key on your remote control to save the new settings.

Chapter 2 - System Setup

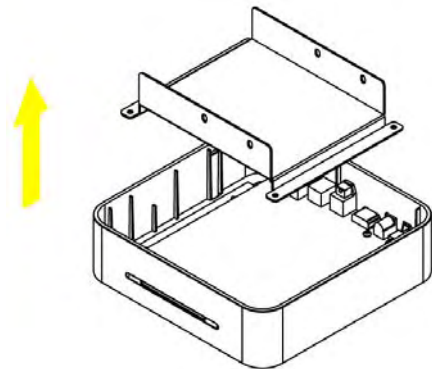
HDD Installation

If your device already comes with a hard drive installed, there is no need to open the case. Please skip this step.

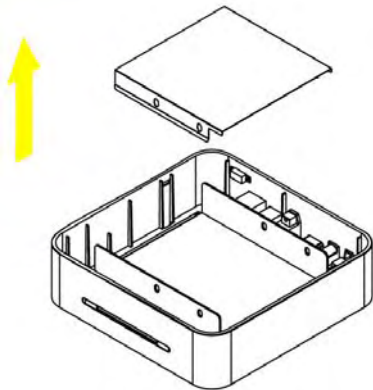
1. Lift the top cover off the body.



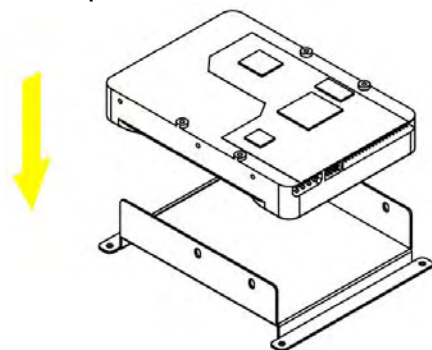
4. Lift the aluminium base out of the enclosure.



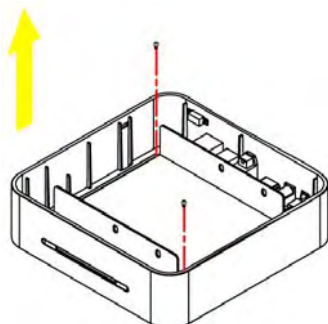
2. Remove the aluminium shielding.



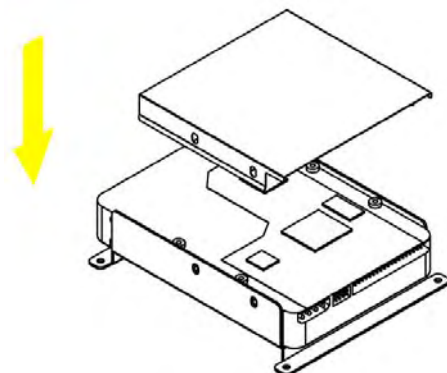
5. Install the hard drive upside down in the aluminium base, so that the mounting holes line up.



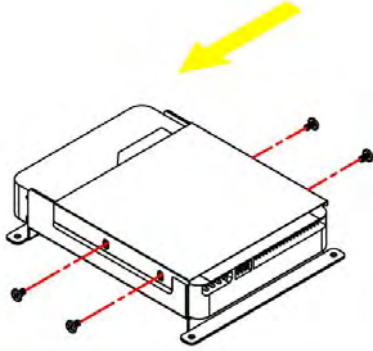
3. Loosen the screws for the base.



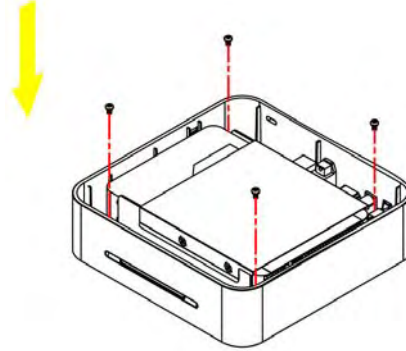
6. Place the shielding on top of the drive.



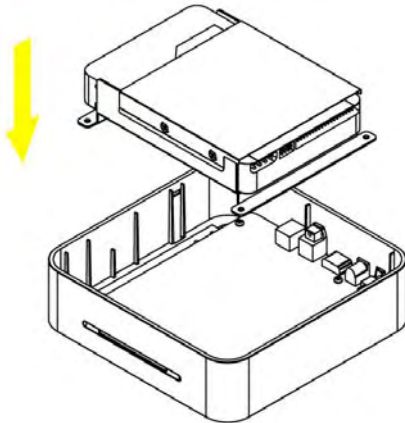
7. Fasten the screws from the side to mount the hard drive to the base.



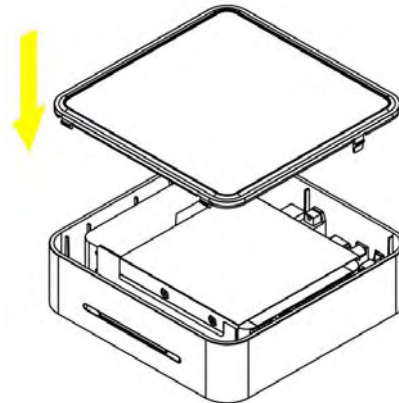
9. Fasten the screws to mount the base to the heat sink.



8. Place the assembled drive back into the enclosure and connect the cables.



10. Align the top cover with the body and push lightly into place.



Note: Set the jumper of the hard drive to master or factory default.

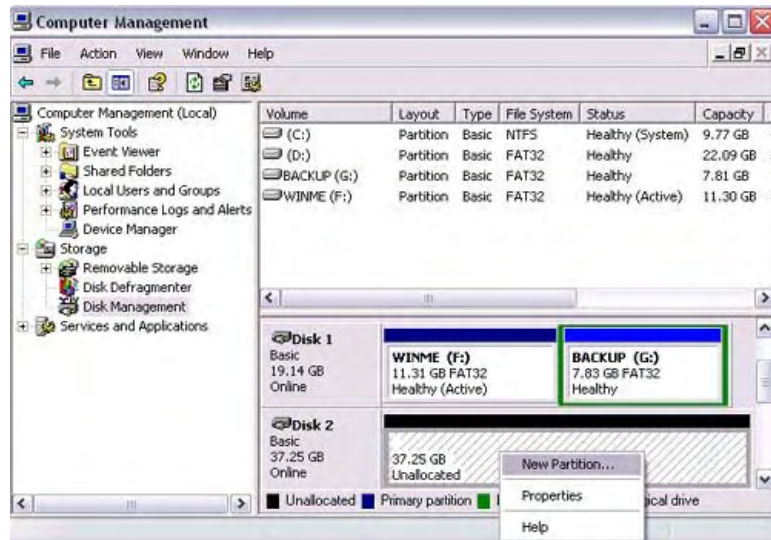
HDD Setup

For brand new hard drives, a partition has to be created first and it has to be formatted. Be aware that formatting the drive will erase all existing data on it! Connect the USB drive to your computer, set the switch to PC and turn it on.

Formatting on a PC (Win2000/XP/Vista)

Use Disk Management:

- Right click on “My Computer” and choose “Manage”
- Select “Disk Management”
- Choose the drive you want to format and right click on the disk or drive field for further commands
- Create a **primary NTFS partition** (basic disk) and format it by following the instructions



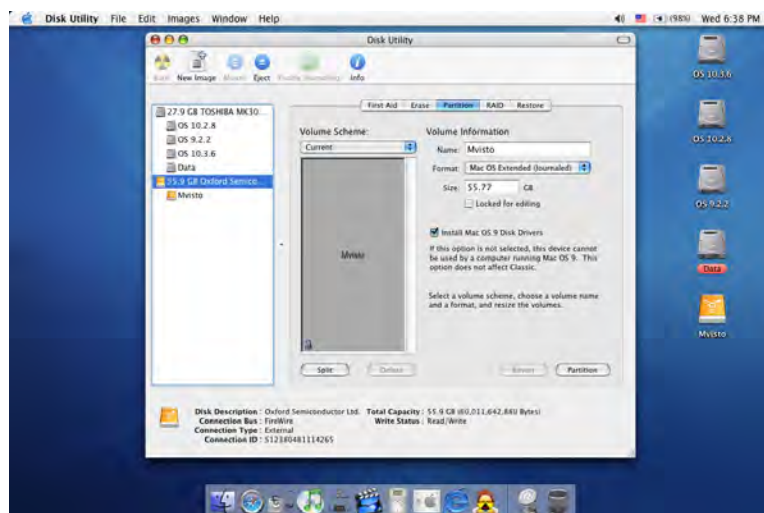
Note: For Win2000, WinXP and Vista, we recommend formatting the drive using the NTFS file system.

If you are using the FAT32 file system to format the drive on Win2000, WinXP or Vista, the biggest single partition you can create will be 32GB. To create larger partitions, you need to use a 3rd party application. The file size for a single file on FAT32 is limited to 4GB!

Formatting on Mac OS X (Mac OS 10.2 or above)

Use the Disk Utility:

- Select “Disk Utility” in the utilities folder
- Choose your external drive and format it according to your requirement
- We recommend creating one single partition and formatting it using “**Mac OS Extended**”



Note: For Mac OS X, we recommend formatting the drive using its native file system HFS+ (Mac OS Extended).

If you are using the FAT32 file system (MS-DOS), it will also be compatible with the PC but the file size for a single file on FAT32 is limited to 4GB!

Creating the Directories

For the Box Office media player to be able to access the files on the hard drive, four (4) folders with the exact name as shown below must be created first! **NONE of the prerequisite folders should ever be deleted or renamed, because your Box Office uses these exact names as a reference to locate the respective files.** Inside these folders you can have any sub-directories that are convenient to you.

Firmware - This folder is for the Box Office firmware files during an upgrade.

Depending on your setup, you can create two additional subfolders inside it.

Font - For an additional font if your language is not supported (not required for English and most European languages).

Settings - Create a text file called "Settings.txt" and store it inside that folder if you want to change the text for the

screen saver message. This file has to be a Unicode text file with two strings. The first line is the default TV mode (PAL or NTSC) in which the Box Office should start before the user applies his/her own settings. The second line is the string used for the screen saver. This string is user editable but should not contain more than 16 letters. Create this file if required, otherwise leave the folder empty.

Movies - This folder will contain your video files.

Music - This folder will contain your music files.

Pictures - This folder will contain your image files.

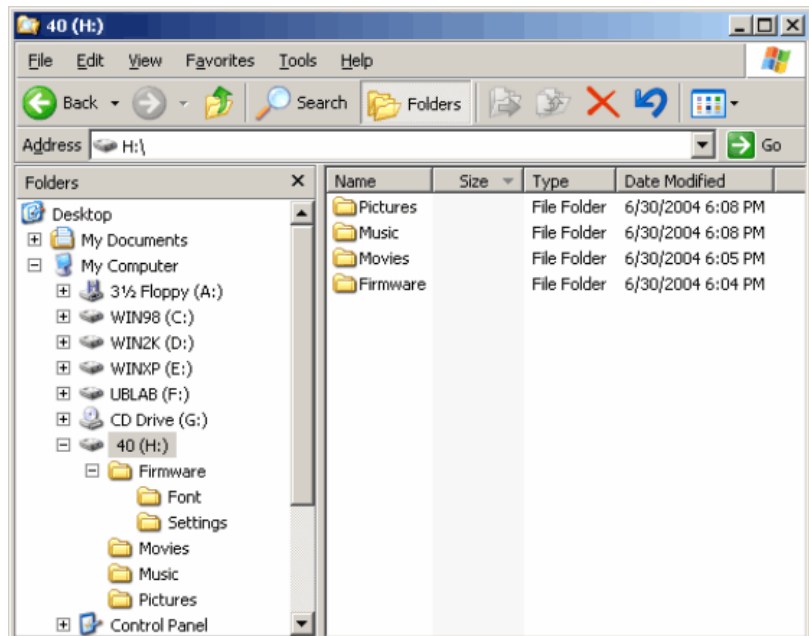
AutoBoot - Optional folder for video files (AVI & MPG) to be played automatically at boot up. Only create this folder when you are actually using this function.

Note: If you need a directory to transfer your files from one computer to another, you may create more directories and name them whatever you like. These folders won't affect the Box Office media player but they will NOT show up on your TV screen!

Font Support

For additional font support other than English or the already supported European languages, we recommend copying the 'Arial Unicode MS' font to the "Font" folder located in the "Firmware" directory. On a PC, you can find this font by going to the Control Panel and then selecting Fonts. After copying the font to the Box Office, rename the file "font.ttf".

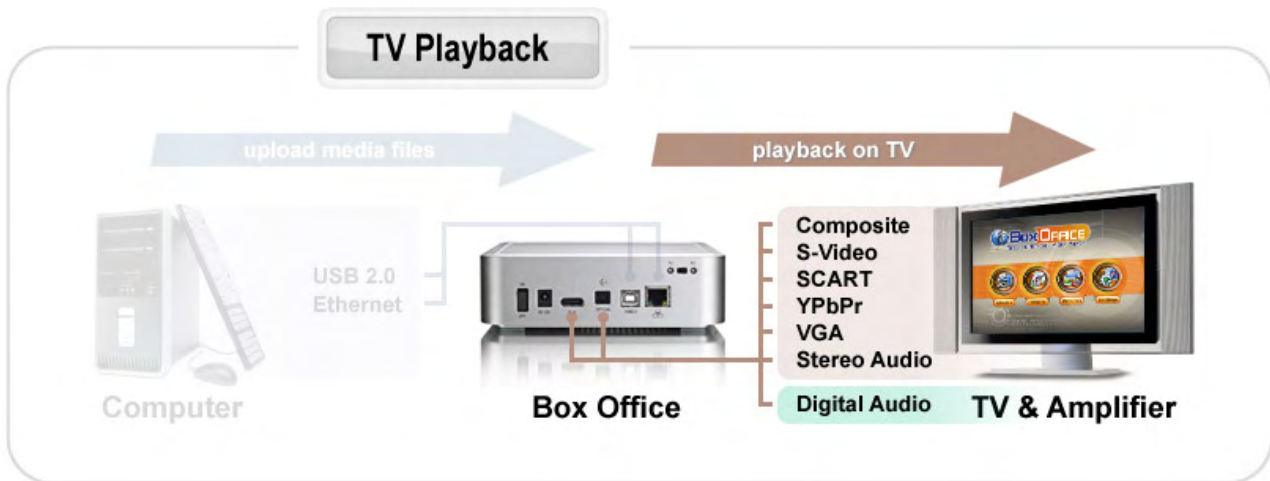
Example: If the original file name is "arialuni.ttf," rename it "font.ttf". You may use any other Unicode true type font (TTF) you have or whatever is available on the internet, but remember to rename the file "font.ttf" after copying it to the Box Office.



TV Connection

The Box Office provides high quality video and audio output when connected to your TV set and audio system. The TV connection is straightforward:

1. Connect the Box Office to your TV set (NTSC or PAL) using the included AV cable.
2. Plug in the power supply.
3. **Set the switch on the Box Office to TV.**
4. Turn it on.
5. Use the remote control to access the files on your TV screen.



When using the default AV cable provided with the Box Office, you have a choice between composite video and S-Video. For the audio, the standard is stereo (left/right) analogue audio. If your TV does not have this connection or you prefer a different type, please purchase some of the additional cables.

Optional cables:

- AV cable with analogue YPbPr video (progressive or interlaced) scalable up to 1280x720p or 1920x1080i.
- AV cable with full SCART (RGB) support.
- VGA AV cable for VGA interfaces with a resolution of 1024x768.

Note: Both YPbPr and VGA video cables provide analogue L/R audio.

From best to worst in regards of the video quality and connection, the order is as followed:

- Component YPbPr 1080i
- Component YPbPr 720p
- Component YPbPr 480p
- Scart RGB
- S-Video
- Composite

The Box Office offers the option for two kinds of audio connection, analogue and digital. Use the analogue connection when connected directly to the TV, or if you don't own a stereo amplifier, use the digital connection when you want to listen to digital surround sound on your home entertainment system.

Analogue Audio Setup

The simplest configuration is when the analogue audio system on your TV set is used. In this case, no matter what type of AV cable you use, the analogue audio is provided to the stereo input of your TV by the left/right RCA jacks.

This configuration uses only one AV cable connected to the multi-connector port (A/V) on the Box Office.

Note: With this simple setup, you can get the highest video quality, but the audio quality remains the same as the stereo analogue quality provided by the TV set's built in speakers.

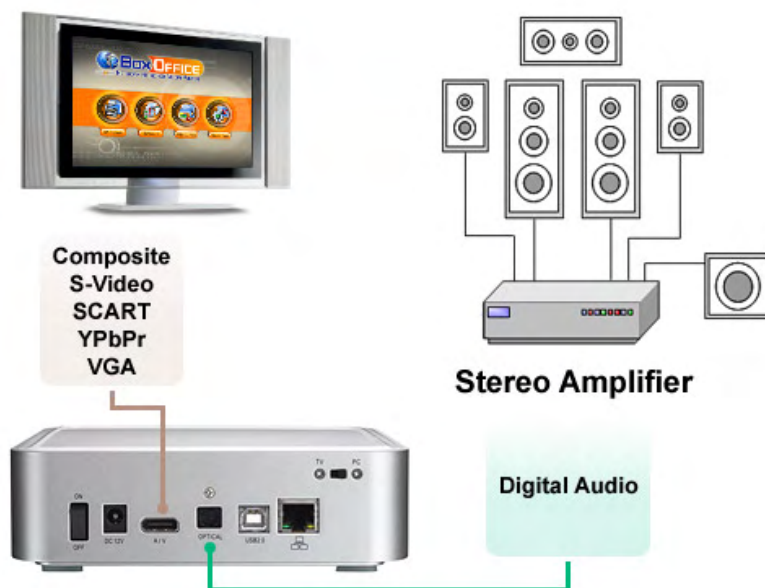


Digital Audio Setup

This configuration provides the best mix of video and audio quality.

In this setup, you can connect any of the available AV cables except the stereo L/R RCA jacks to the TV set speakers.

Instead, use the digital audio port (OPTICAL) of the Box Office. Connect this port using the SPDIF optical audio cable to the digital input of your Dolby Digital or DTS Home Theatre Receiver/Processor.



Note: With this more advanced setup and the use of a 5.1 surround speaker system, you can experience optimum sound as well as video quality.

USB Connection

The Box Office operates as a standard USB 2.0 mass storage device when connected to a computer via USB. Use the included cable to connect your device to the computer system.



Always connect the USB cable to your computer first and **set the switch to PC**, before you turn on the device. Your system will automatically recognise the Box Office as external hard disk in which you then can copy any file(s) you want (music, movies, pictures, and/or data).

It is strongly recommended to empty the “Recycle Bin” after your file(s) deletions to free the HDD space.

The Box Office supports the following file formats: FAT32 (Windows & Mac) NTFS (Windows), HFS+ (Mac). If your computer system does not have a USB 2.0 interface, but only USB 1.1, you will receive a warning. You can still use the device with USB 1.1, but with a slower performance level.

Note: You will always need the external power adapter when connected to the computer. If the switch on the Box Office is set to TV, the device will not be recognised by the computer.

NONE of the prerequisite folders should ever be deleted or renamed, because your Box Office uses these exact names as a reference to locate the respective files.

Inside these folders you can have any sub-directories that are convenient for you.

Firmware - This is the folder in which you can copy the latest Box Office firmware files when there is a new upgrade available.

Movies - Store all your video clips and movies inside this folder.

Music - Store all your music files inside this folder.

Pictures - Store all your images and photos inside this folder.

Note: Media files stored in different locations will not be recognised by the media player when it is connected to the TV.

To backup your files or to transfer data between different computers and platforms, you may create as many new folders in the root directory as you like. These will not affect the Box Office media player and also won't be seen on the TV screen.

Safe Removal

In order to safely remove the Box Office from your system, please follow the same procedures as for any external Plug & Play device.

PC

Double click on the taskbar icon to “Unplug or Eject hardware”. The adjacent dialogue box will appear, displaying the external Plug & Play devices. In the current example, you can see the Box Office as a USB Mass Storage Device.

In order to remove it, select the device in the list and then press Stop.

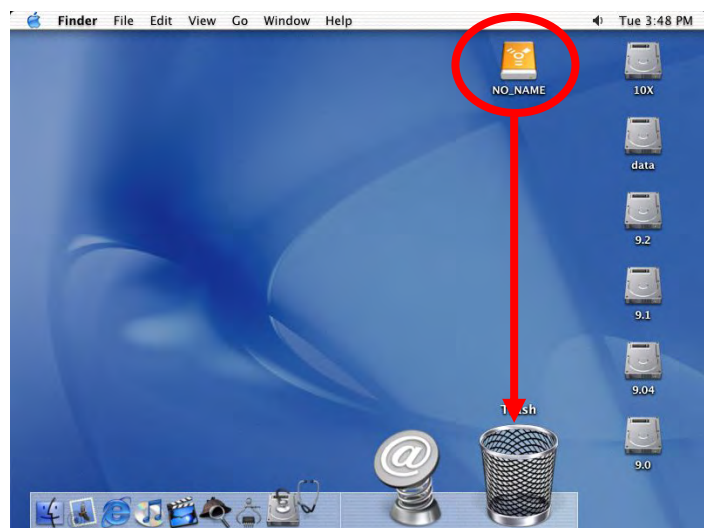


Click OK on the next dialogue box. The operating system will automatically stop the device and inform you for its safe removal. If you are using the Box Office (e.g. you are working on a Word document or a picture located in its disk), the operating system will notify you that it is unable to remove the device. If that’s the case, close all the applications affecting or accessing the Box Office and try again.



Mac

Drag the drive icon into the trash bin to eject and remove the drive.



Note: Always follow the safe removal process when disconnecting the device or it might not be recognised on the TV.

NDAS Setup

Driver installation on a PC

- Insert the driver CD and select your Operating System.
- If installation does not start automatically, browse and double-click on the 'NDASSetup' file.
- Follow the installation wizard and install the driver.
- Accept any warnings of missing signatures or logo testing.
- Restart your system when prompted to do so.

Driver installation on a Mac

- Insert the driver CD.
- Browse for the 'NDAS Install' package and execute it.
- Follow the installation wizard and install the driver.
- After finishing the installation, restart your computer.

The Device ID

- The device ID can be found on a sticker on the outside or the inside of your enclosure.
- The device ID and Write Key do not contain the letter O. Always use the number 0.
- Without the Write Key, the NDAS disk can only be accessed with 'Read Only' permit.

Registering a new device on a PC

- Click on the NDAS Device Management icon on the taskbar.
- Select 'Register a New Device'.
- Depending on your setup under Options/Advanced/Menu, you can use the registration wizard or do it manually.
- Enter a name for your NDAS disk or use the default name.
- Add your NDAS device ID and if you also want to write to the disk, enter the Write Key (last 5 digits).

Register a new NDAS Device

NDAS Device Name

NDAS Device 1

NDAS Device ID

TOPSC RR93E CEBMG 3PRCE

Write Key

Write Key must be entered if you want to use the device as Read/Write Mode

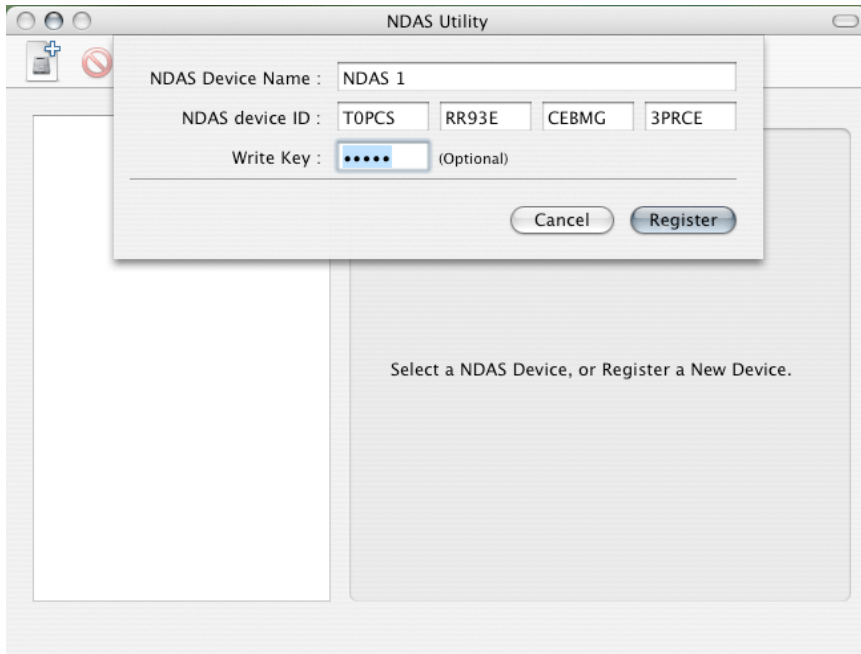
Activate this device after registration

Register Cancel

Note: After adding a new device, the Found New Hardware Wizard may appear. Let it search for and install the drivers automatically.

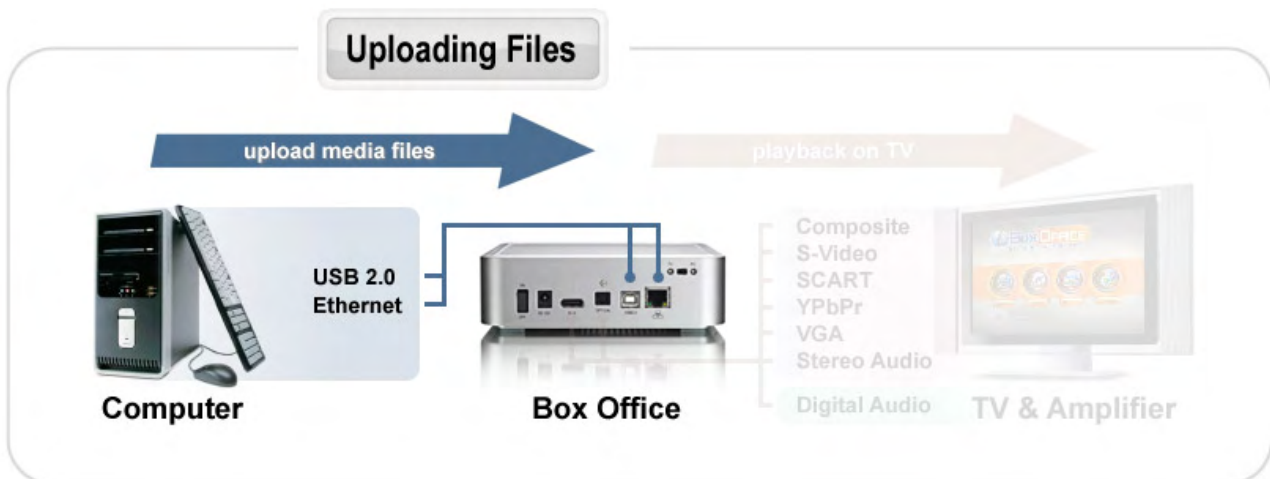
Registering a new device on a Mac

- Locate the 'NDAS Utility' found inside your Applications folder under Utilities and open it.
- Under Management, select 'Register a New Device'.
- Enter a name for your NDAS disk or use the default name.
- Add your NDAS device ID and if you also want to be able to write to the disk, enter the Write Key (last 5 digits).



Chapter 3 - Uploading Files

There are two ways you can upload new files to your Box Office media player. You can do it via local network or via USB connection. Either way, if you wish to access and display the files on your TV screen, make sure to always store the media files in the correct prerequisite folders.



Note: You can only use one interface at the time! To upload new files, set the switch to PC and use either the USB or the Ethernet connection but not both at the same time.

USB Connection

1. Connect the USB cable to your computer and the Box Office.
2. **Set the switch to PC.**
3. Turn on the device.
4. Erase old files and upload new ones to the media player.
5. Eject the drive, remove the USB cable and turn it off.
6. Set the switch to TV.
7. Connect it to your TV and turn it back on.
8. Done!

Ethernet Connection

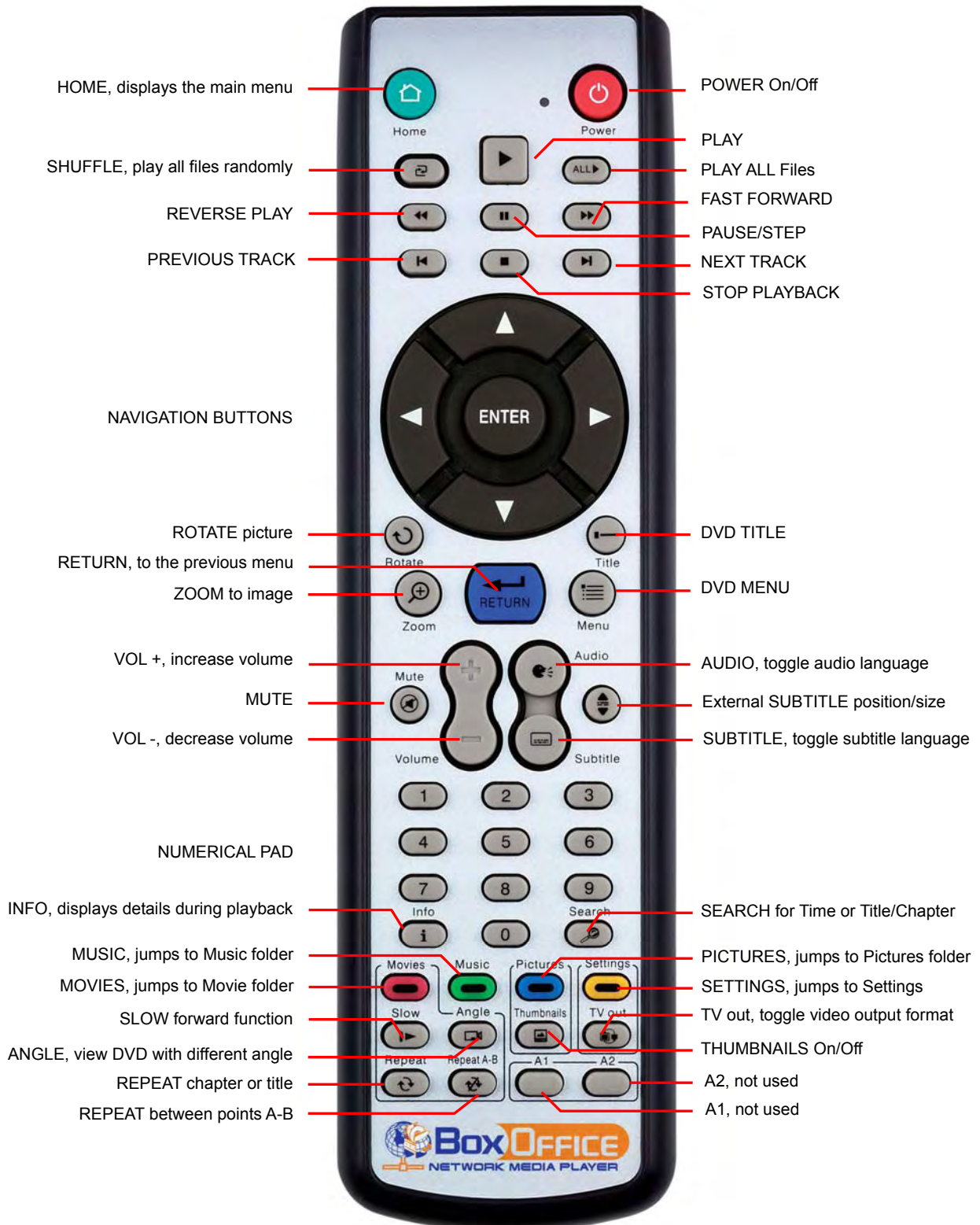
1. Connect the Ethernet cable to your Box Office and a router on the local network.
2. **Set the switch to PC.**
3. Turn on the device.
4. Mount the network drive on your computer using the NDAS utility.
5. Erase old files and upload new ones to the media player.
6. Eject the drive.
7. Set the switch to TV.
8. Done!

Note: In case of the USB connection, it will most likely be necessary to physically move the device from one location to the other. We recommend always turning off the power and waiting for the hard drive to spin down before you re-locate the device!

Chapter 4 - TV Playback

The Remote Control

The Box Office remote has all the functional capabilities to fully control your device and enjoy your multimedia files. The next figure describes each button's function.



Button	Functionality	
	Movies	Music
HOME	Displays the main menu	Displays the main menu
POWER	POWER On/Off	POWER On/Off
SHUFFLE	Play all files randomly	Play all files randomly
PLAY/ENTER	SELECT/PLAY movie	SELECT/PLAY song
PLAY ALL	PLAY ALL Files	PLAY ALL Files
REVERSE PLAY	REVERSE PLAY	REVERSE 10 seconds of the song
PAUSE/STEP	PAUSE/STEP	PAUSE
FAST FORWARD	FAST FORWARD	FORWARD 10 seconds of the song
PREVIOUS TRACK	PREVIOUS TRACK (.ISO), PREVIOUS 5 MIN (XviD), PREVIOUS page in file list	Select PREVIOUS song and display PREVIOUS page in file list
STOP PLAYBACK	STOP PLAYBACK	STOP PLAYBACK
NEXT TRACK	NEXT TRACK (.ISO), NEXT 5 MIN (XviD), NEXT page in file list	Select NEXT song and display NEXT page in file list
ROTATE	N/A	N/A
ZOOM	Use arrow keys to stretch image, then press Enter and use arrow keys to scroll	N/A
RETURN	Return to the previous menu	Return to the previous menu
TITLE	DVD TITLE (.ISO files only)	N/A
MENU	DVD MENU (.ISO files only)	N/A
MUTE	Mute	Mute
VOL +	Increase volume	Increase volume
VOL -	Decrease volume	Decrease volume
AUDIO	Toggle audio language	N/A
SUBTITLE	Toggle subtitle language	N/A
EXT. SUBTITLE ◀▶	Text SUBTITLE size for XviD files	N/A
EXT. SUBTITLE ▲▼	Text SUBTITLE position for XviD files	N/A
NUMERICAL PAD	Use for Time Search	Used for Time Search
INFO	Displays file information (e.g. size, format, etc)	Displays file information (e.g. size, format, etc)
SEARCH	SEARCH for Time or Title/Chapter applicable ONLY for .ISO files	Search for Time
MOVIES	Go to top folder	Jump to Movies folder
MUSIC	Jump to Music folder	Go to top folder
PICTURES	Jump to Pictures folder	Jump to Pictures folder
SETTINGS	Jump to Settings	Jump to Settings
SLOW	SLOW forward function (.ISO files only)	N/A
ANGLE	View DVD with different angle (.ISO files only)	N/A
THUMBNAILS	N/A	N/A
TV OUT	VIDEO OUTPUT, toggle video out format. You can switch between the individual video outputs pressing this button. The video output selected at any time will be shown on the screen. If you cannot see the correct image on the TV or VGA screen, press this button until the image appears.	VIDEO OUTPUT, toggle video out format. You can switch between the individual video outputs pressing this button. The video output selected at any time will be shown on the screen. If you cannot see the correct image on the TV or VGA screen, press this button until the image appears.
REPEAT	REPEAT chapter or title, applicable ONLY for .ISO files	N/A
REPEAT A-B	REPEAT between points A-B, applicable ONLY for .ISO files	N/A
A1	N/A	N/A
A2	N/A	N/A
INFO 0 1 2 RETURN	By pressing the buttons consecutively: INFO 0 1 2 RETURN, the unit is set to factory default	By pressing the buttons consecutively: INFO 0 1 2 RETURN, the unit is set to factory default

Button	Functionality	
	Pictures	Settings
HOME	Displays the main menu	Displays the main menu and saves new settings
POWER	POWER On/Off	POWER On/Off (not during Firmware update)
SHUFFLE	Play all files randomly	N/A
PLAY/ENTER	SELECT/DISPLAY image	SELECT
PLAY ALL	PLAY ALL Files	N/A
REVERSE PLAY	N/A	N/A
PAUSE/STEP	N/A	N/A
FAST FORWARD	N/A	N/A
PREVIOUS TRACK	Select PREVIOUS image and display PREVIOUS page in file list	N/A
STOP PLAYBACK	STOP DISPLAY	N/A
NEXT TRACK	Select NEXT image and display NEXT page in file list	N/A
ROTATE	Rotate picture	N/A
ZOOM	ZOOM IN (using ⇒ key), ZOOM OUT (using ⇐ key), press Enter and use arrow keys to scroll	N/A
RETURN	Return to the previous menu	Return to the previous menu and cancel command
TITLE	N/A	N/A
MENU	N/A	N/A
MUTE	N/A	N/A
VOL +	N/A	N/A
VOL -	N/A	N/A
AUDIO	N/A	N/A
SUBTITLE	N/A	N/A
EXT. SUBTITLE ◀▶	N/A	N/A
EXT. SUBTITLE ▲▼	N/A	N/A
NUMERICAL PAD	N/A	N/A
INFO	Displays file information (e.g. size, format, etc)	N/A
SEARCH	N/A	N/A
MOVIES	Jump to Movies folder	N/A
MUSIC	Jump to Music folder	N/A
PICTURES	Go to top folder	N/A
SETTINGS	Jump to Settings	Leave Settings and go to Home
SLOW	N/A	N/A
ANGLE	N/A	N/A
THUMBNAILS	Image preview ON/OFF	N/A
TV OUT	VIDEO OUTPUT, toggle video out format. You can switch between the individual video outputs pressing this button. The video output selected at any time will be shown on the screen. If you cannot see the correct image on the TV or VGA screen, press this button until the image appears.	VIDEO OUTPUT, toggle video out format. You can switch between the individual video outputs pressing this button. The video output selected at any time will be shown on the screen. If you cannot see the correct image on the TV or VGA screen, press this button until the image appears.
REPEAT	N/A	N/A
REPEAT A-B	N/A	N/A
A1	N/A	N/A
A2	N/A	N/A
INFO 0 1 2 RETURN	By pressing the buttons consecutively: INFO 0 1 2 RETURN, the unit is set to factory default	By pressing the buttons consecutively: INFO 0 1 2 RETURN, the unit is set to factory default (not when you select Firmware update)

Unique Control Keys

The Box Office remote control has a full set of buttons in order to provide the user with complete control of the device. The following paragraphs describe the functions of some important buttons; while in the previous table, there is a list of all the keys and their functions.



This key toggles the video out format. You can switch between the individual video outputs pressing this button. If you cannot see the Box Office main screen on the TV or VGA display, press this button until an image appears. The video indication banner appears for a few seconds each time you press the **TV OUT** button and also each time you switch on the Box Office.

Toggling TV OUT does not save the video settings. To do so, select the “Video Settings” from the Settings menu.



This key allows you to position the external subtitles of XviD movies. When it is pressed, a dual set of white template lines will appear for you to position using the ▲ ▼ keys. Press the button again when done positioning.

Use the same button to also adjust the font size for the external subtitles. After pressing this button, use the ◀ ▶ keys to increase or decrease the size. Press the button again when done resizing.



Pressing this key turns the image preview of your photos ON or OFF.



Pressing this key will shuffle all the content in the present folder randomly and start playing back all files inside the folder continuously.

INFO, 0, 1, 2, RETURN

To return to factory default settings, press the above keys successively.

0 INFO 0 and 1 INFO 1

Press the HOME button to go to the main screen and then press 0 INFO 0 to temporarily turn off the on-screen display (OSD). To turn it back on, press the HOME button and then press 1 INFO 1. This setting will reset itself to “enabled” after the unit has been rebooted. As an example, before a slideshow presentation, this function can be used to turn off all on-screen messages.

Menu Functions

This paragraph presents the various menus and their functions when operating the Box Office media player.

Main Menu

This is the main page that appears when you turn on the Box Office media player.

You have four (4) main selections that you can access with the navigation buttons and by pressing PLAY/ENTER:

- Movies
- Music
- Pictures
- Settings



Please see following paragraphs for a more detailed description of the individual menus.

Movies

Selecting the Movies menu or pressing the Movies button on your remote control will bring you to the Movies folder. On the right side, you will see the directory list of the video clips that are stored in your Movies folder on the device's hard disk.

Each directory is named under left/right brackets: “[”, “]”.

For example, in the directory “[XviD]” we have stored various XviD video clips. You can make any directory you want with your desired name and store any movie you want in it (use your computer to create and change directories!). Please note that every directory can contain one or more sub-directories, depending on your own preferences.

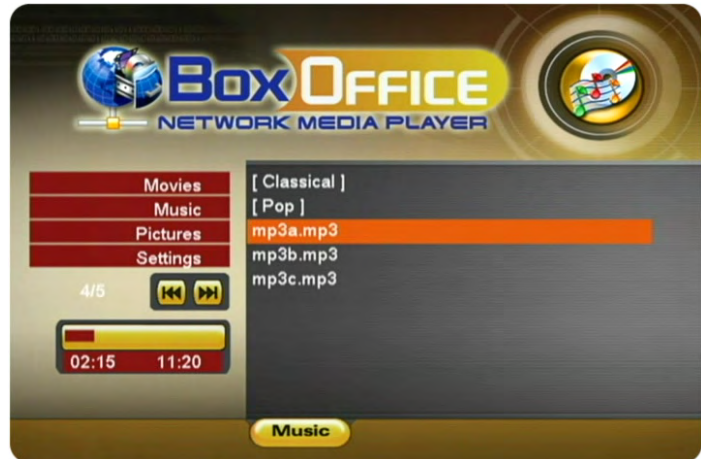


By using the navigation buttons and the PLAY/ENTER key on your remote control, you can select the files you want to play.

If you have more files than can fit on the first page, you can either scroll down to access the next page or use the NEXT and PREVIOUS buttons on your remote control to jump to the next page.

Music

Selecting the Music menu or pressing the Music button on your remote control will bring you to the Music folder. On the right side you will see the directory list of the music clips that are stored in your Music folder on the device's hard disk.



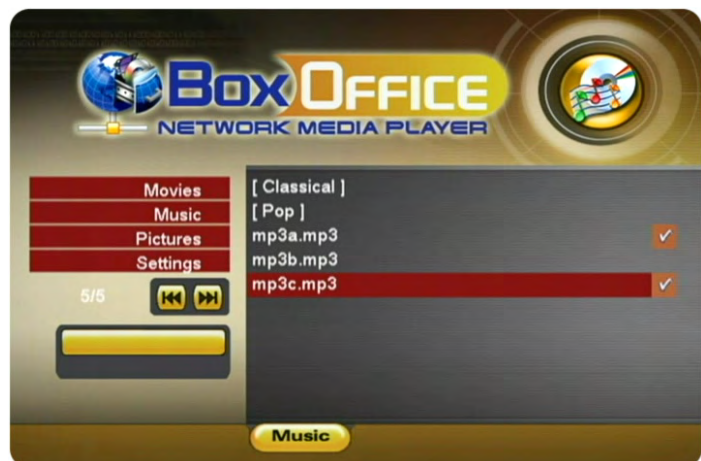
Each directory is named under left/right brackets: “[”, “]”. You can make any directory you want with your desired name and store any music file you want in it. Please note that every directory can contain one or more sub-directories, depending on your own preferences (use your computer to create and change the sub-directories!).

By using the navigation buttons and the PLAY/ENTER keys on your remote control, you can select the music file you want to play. Use the INFO button during playback for further details of your present song or see the progress bar on the left side.

Music Playlist

Inside a folder, you can select certain individual songs you like and create a playlist.

1. Use the up/down keys to highlight the song
2. Press the right arrow key to add or remove the file from the playlist
3. Add as many songs in the same folder as you like
4. When finished, press the PLAY ALL or SHUFFLE button to start the playback

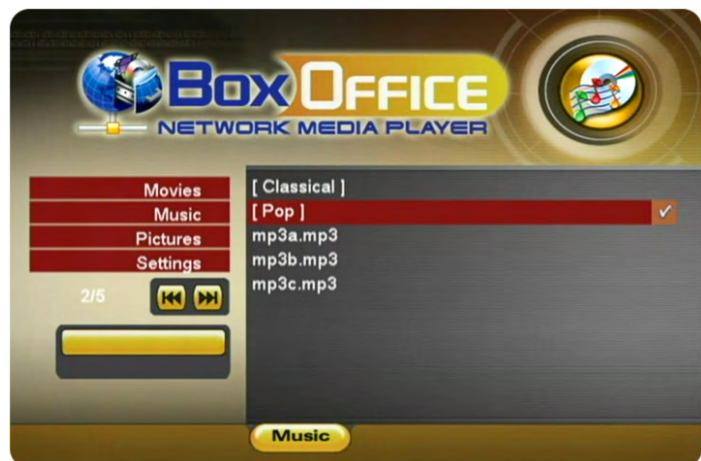


Note: You can only create a playlist with files in the same folder. Once you turn off the power, the playlist will be reset.

Background Music

To listen to music during a slideshow presentation, select one music folder that contains the songs you want to hear (only MP3 songs with a bit rate of up to 128kbps).

Use the up/down keys to highlight the folder and then press the right arrow key to select it. Press the right arrow key again to deselect.



Pictures

Selecting the Pictures menu will bring you to the Pictures folder. On the right side you will see the directory list of the images that are stored in your Pictures folder on the device's hard disk.

Each directory is named under left/right brackets: “[”, “]”.

You can make any directory you want with your desired name and store any pictures you want in it. Please note that every directory can contain one or more sub-directories, depending on your own preferences (use your computer to create and change the sub-directories!).

By using the navigation buttons and the PLAY/ENTER keys on your remote control, you can select the photos that you want to display. Press the THUMBNAILS button to turn on the image preview on the left corner of your screen (depending on the file size, the preview will slow down the file access).

During playback, you can use the ZOOM, PAN and ROTATE function.

Picture Playlist

Inside a folder, you can select certain individual images you like and create a playlist.

1. Use the up/down keys to highlight the image
2. Press the right arrow key to add or remove the file from the playlist
3. Add as many images in the same folder as you like
4. When finished, press the PLAY ALL or SHUFFLE button to start the playback

Note: You can only create a playlist with files in the same folder. Once you turn off the power, the playlist will be reset.

If you like to listen to some music during the slideshow presentation, go to the Music menu and select a folder that contains the songs you would like to use as background music. See previous page for more details.



Settings

The Box Office Settings menu is extremely important in order to correctly configure your device and benefit from its advanced features. In the following paragraphs, there are detailed descriptions of the various settings and parameters.

Languages

The Box Office provides the unique feature to support a multilingual audience. With sophisticated Unicode character handling, it supports most of the major languages used in the menu selection and the subtitle feature of movies. **Refer to the “Font Support” paragraph for further details on how to enable languages other than English.**

Use the ▲▼ navigation buttons to select your language and press the PLAY/ENTER button to activate it. Press the HOME button on your remote control to save the language setting. Once activated, all the menu selections and wording will switch to the selected language.

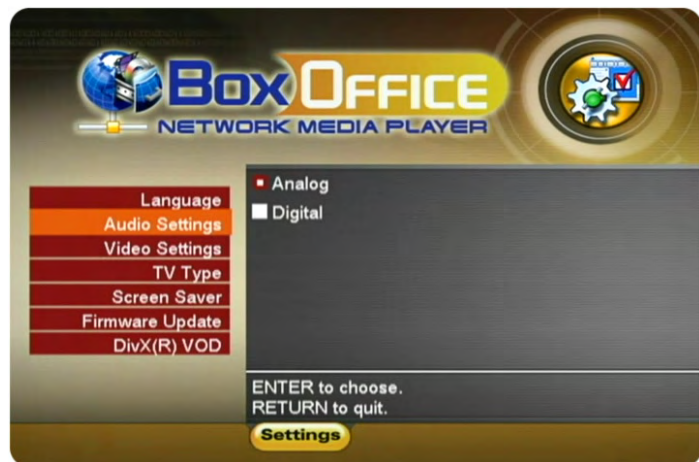


Audio Settings

These settings configure the provided audio output format:

- Analog for the dual Stereo audio
- Digital for the optical SPDIF digital audio (supports compressed Dolby Digital 5.1 and DTS pass through).

Use the ▲▼ navigation buttons to select your audio setting and press the PLAY/ENTER button to activate it. Press the HOME button on your remote control to save the audio setting.



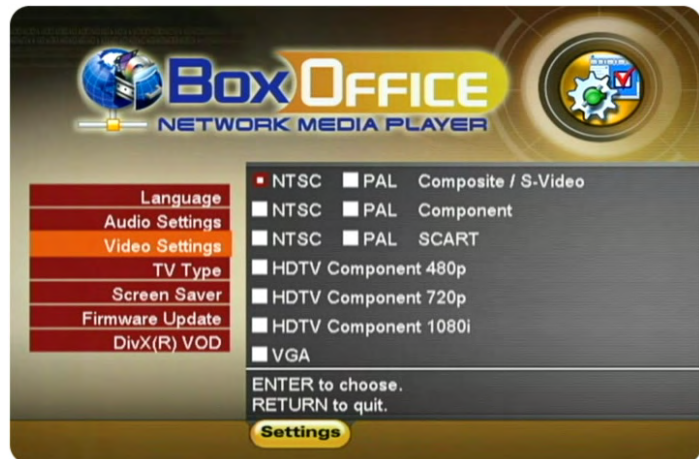
Selecting analogue audio out will output the stereo audio to the L/R RCA jack from your AV cable.

Selecting digital audio output will provide digital sound through its SPDIF digital audio port. In this case, you have to connect this port using the SPDIF optical cable to the digital input of your Dolby Digital or DTS Home Theatre Receiver/Processor in order to take advantage of the high audio quality.

Video Settings

These settings configure the provided video output format:

- NTSC Composite/S-Video
- PAL Composite/S-Video
- NTSC Component
- PAL Component
- NTSC SCART
- PAL SCART
- High Definition output at 480p
- High Definition output at 720p
- High Definition output at 1080i
- VGA at 1024x768



Use the ▲▼ navigation buttons to select your Video setting. Press the PLAY/ENTER button to activate it. Press the HOME button on your remote control to save the setting. Once activated, the video out will switch to the selected format. **Please note that you should have already connected the correct cable before configuring the video settings; otherwise, the TV screen may not display properly. For example, before enabling the “NTSC SCART” option, you should have already connected the SCART cable.**

In case of any setting errors (e.g. the simple Composite AV cable is connected and you setup NTSC Component with no display on the TV screen), press the “TV out” key on the remote control repeatedly until you see the correct display. You can then choose the right video output via “Settings” and save it by pressing the HOME button.

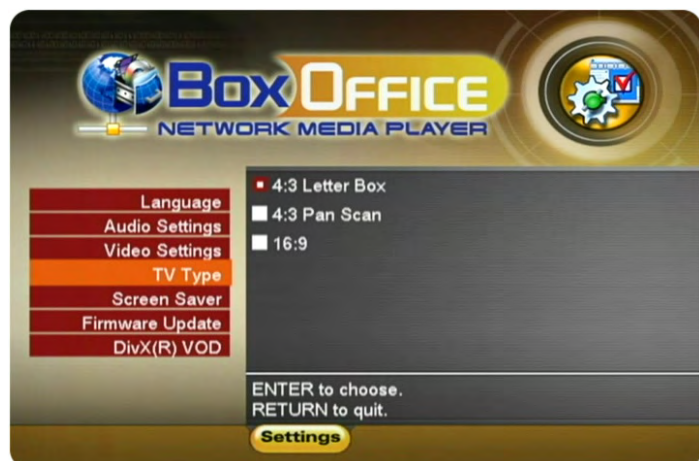
TV Type

Select one of the listed types of TV display aspect ratios.

Press the HOME button on your remote control to save the setting.

Screen Saver

Select the time interval to enable the screen saver when your Box Office device is idle.



There are three (3) predefined time intervals of 5, 10, and 30 minutes, and one to disable the screen saver.

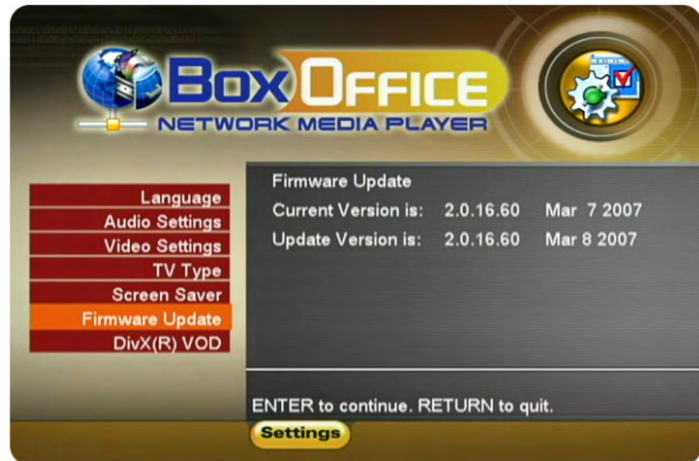
Use the ▲▼ navigation buttons to select your screen saver. Press the HOME button on your remote control to save the setting.

Firmware Update

This setting performs the firmware update procedure by reading the firmware binary files located in the “Firmware” directory of you device.

Never delete or rename this folder!

Provided that you have already copied the latest firmware files to this directory, press the ENTER key to start the process. From the menu, you can verify the revision number of the installed version and the revision of the new release.



The firmware update procedure takes approximately 1 minute. Once completed, turn off your device by using the power switch on the Box Office media player. Wait for a few seconds and then turn it back on. The new firmware is now ready and in use.

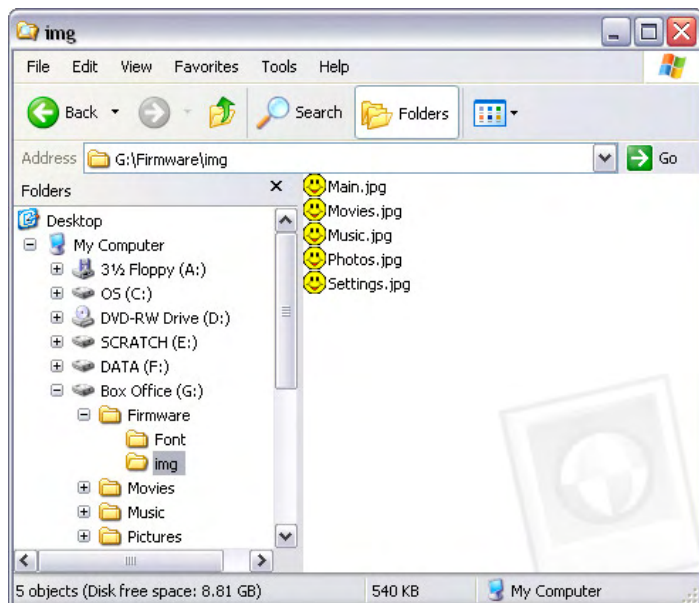
NOTE: NEVER TURN OFF THE BOX OFFICE DURING THE FIRMWARE UPDATE PROCEDURE. THIS MAY DAMAGE YOUR DEVICE. IF FOR ANY REASON (E.G. POWER SUPPLY FAILURE DURING FIRMWARE UPDATE) THE PROCEDURE FAILS, YOU MAY NOT BE ABLE TO OPERATE YOUR DEVICE. IN THIS CASE, YOUR DEVICE MUST BE REPLACED WITH A FUNCTIONAL UNIT BY YOUR VENDOR.

To return to factory default settings press successively: INFO, 0, 1, 2, RETURN

Background Images

The background images seen on your TV can be customised! To do so, connect your Box Office to the computer and create a new folder inside the Firmware directory called “img”. Prepare your new background images and save them inside the “img” folder.

The files have to be saved as JPG and the dimension should be 720x480 with a DPI of 72. Name them exactly as followed: Main.jpg, Movies.jpg, Music.jpg, Photos.jpg and Settings.jpg. If one of these images is missing or not spelled exactly as seen above, none of the customized images will appear on your TV screen! If you don't like the new look, either change the images or simply delete the folder, empty the trash bin and your original background images will show up again.



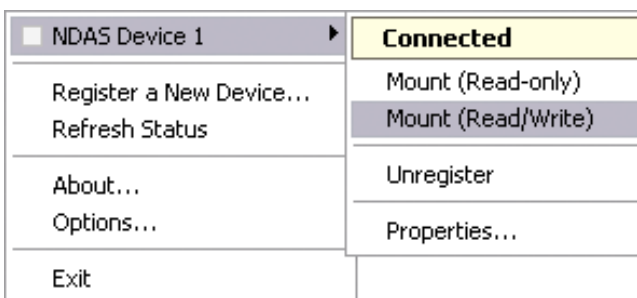
Chapter 5 - NDAS Network Drive

Mounting and using your NDAS disk

To update your media files via network, you can mount the drive on your computer via Ethernet connection. If not in use for playback on your TV, the Box Office can of course also be used as a standard network attached storage device.

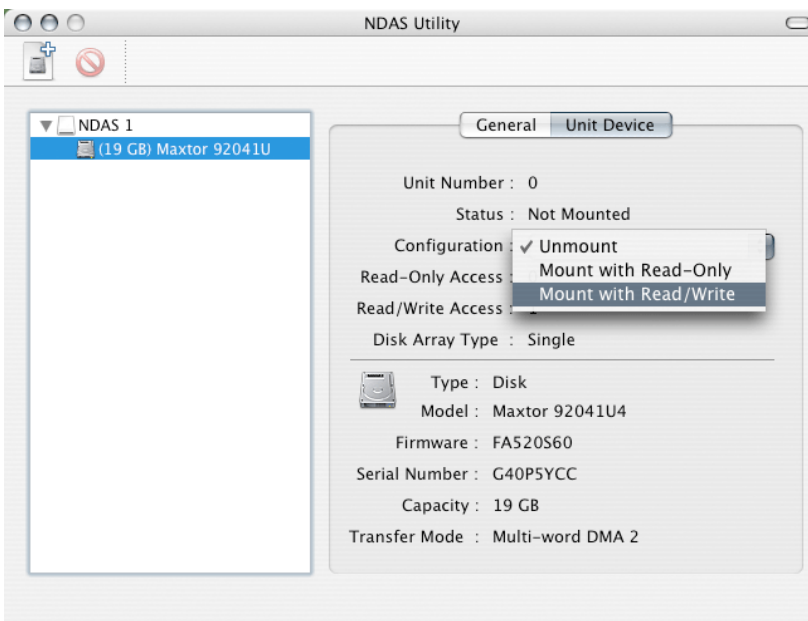
Mounting the NDAS disk on a PC

- Click on the NDAS Device Management icon on the taskbar.
- Select your new NDAS device, which should now be listed.
- Mount the drive using either Read Only or Read & Write.
- The drive is now available under My Computer.



Mounting the NDAS disk on a Mac

- Open the NDAS Utility and select your new NDAS device.
- Under 'Configuration', mount the drive using either the Read Only or Read & Write mode.
- The drive will now appear on your desktop.



Note: The Read & Write mode will be disabled if the Write Key was no entered during the registration process.

Using and sharing the NDAS disk on the network

Now that you have successfully mounted the NDAS disk, you can use it like any other hard drive on your system. It will behave similarly to a standard USB disk.

You may drag and drop files into the NDAS disk, you can create new folders, copy, paste, move or delete files or use it as your backup device. To share and access the drive, you have the following options to limit or allow the access.

Read Only

Users can only read from the disk.

Read & Write

Users can read and write to the disk and can also delete any files created by someone else.

No ID number

Without driver and without an ID number, the device can neither be found nor accessed on the network.

No Write Key

Without the Write Key, the disk can only be mounted using the Read Only mode.

Unmount

To eject the disk, close all open folders and files, then select Unmount to eject it. The device will still be registered and you can mount it again anytime you need it.

Changing Modes

To change from Read & Write mode to Read Only as an example, first Unmount the device, then mount it again using the new mode.

Tip: For best performance, use only network switches and routers but no hubs. When you write to the disk, limit the access for as few users as possible, to speed up the transfer rate.

Note: If a Mac is connected using the Read & Write mode, other computers can only connect using the Read Only mode. If a PC is connected using the Read & Write mode, the Mac can only connect using the Read Only mode.

If the disk is connected directly to the computer using USB, full access is granted, regardless of the driver setup used on the network.

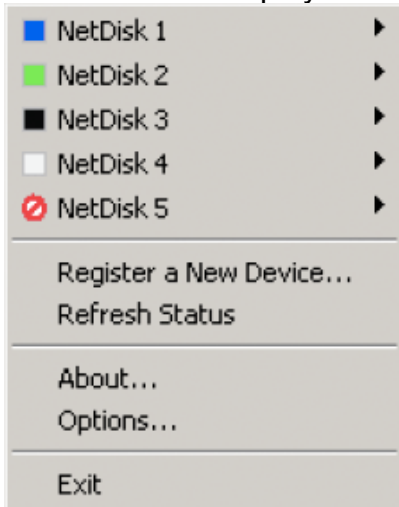
For the NDAS mode, drivers need to be loaded on each computer that wants access to the NDAS device.

To disconnect the NDAS disk, we always recommend using the option in Device Management (Device Utility for Mac) if connected via Ethernet. You can use the ‘Unplug or Eject Hardware’ icon in your taskbar (Eject for Mac) to stop the disk before disconnecting it from Device Management. Close all windows that may be accessing the NDAS device.

Note: DO NOT perform disk operations (format, partition, chkdsk) when other computers have the NDAS mounted.

NDAS Device Management on a PC

Click on the NDAS Device Management icon located on the taskbar. All registered NDAS devices will be displayed on the menu.



Register a New Device

Registers a new NDAS device to your computer.

Refresh Status

Updates the status of your NDAS devices.

About

Displays NDAS software version information.

Options

Advanced options for language settings, error messages, menu dialogs and support for suspend and hibernation.

Device Functions

To view the present status and function of a certain device, place the cursor on your NDAS disk. You will be able to see the current state such as Disconnected, Connected, Mounted (RW), Mounted (RO) or Deactivated.











Mounted (RW) stands for Read & Write mode, Mounted (RO) stands for Read Only mode.

Note: If you want to use suspend or hibernation mode with a connected NDAS device, enable it first under Options and Advanced.

Tip: To change a device name or remove the Write Key, select your NDAS device and go to Properties for further commands.

Tip: To deactivate your device or reset the connection, select your NDAS device, go to Properties and select the Advanced tab for further commands.

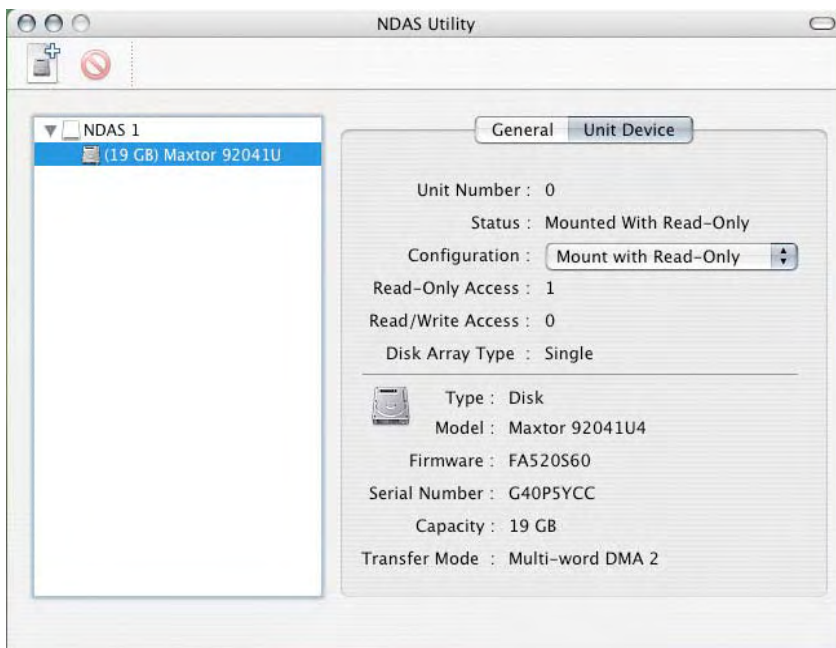
Device Status Modes

Color	Icon	Disk Icon	Mode / Meaning
Green			Read Only [Mounted (RO)] Users can only read from disk
Blue			Read & Write [Mounted (RW)] Users can read and write to disk
White			Connected Disk is ready to be mounted
Black			Disconnected Device is registered but not connected or mounted
Red			Deactivated Device is registered but no attempts will be made to communicate with your device
Yellow			Bound Non-Primary Used for bound NDAS devices except the primary device

Note: To uninstall the entire Device Management tool, first eject and remove all NDAS devices, then use the Add or Remove Programs utility in your Control Panel to remove the NDAS Software.

NDAS Utility on a Mac

Locate the 'NDAS Utility' found inside your Applications folder under Utilities and open it. All registered NDAS devices will be listed here.



Note: To access the Configuration and mount a device, select the hard disk itself, as shown in this screenshot.

Configuration

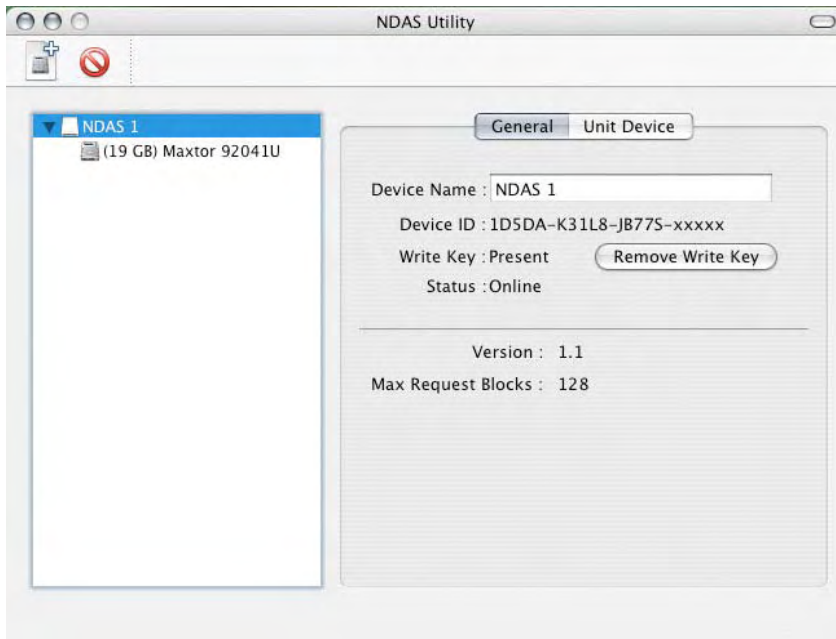
Selection to Mount and Unmount the device using either Read Only or Read & Write mode.

+ Sign

Register a New Device.

Management

Both the above can be done using the Management menu on top of your screen.



Device Name

NDAS device name

Remove Write Key

If there is an existing Write Key, it can be removed by clicking this button. The device can then only be mounted using the Read Only mode.

Note To uninstall the NDAS Utility, first eject all devices and remove them, then insert the driver CD, open the corresponding folder for your OS and start the 'NDAS Uninstaller'.

Tip: To remove the Write Key, select the NDAS device itself, as shown in the screenshot.

Tip: Without the Write Key, the Read & Write mode will be disabled.

Driver Upgrade

It is recommended that all users use the same driver revision. Before upgrading the driver, please follow these guidelines:

- If possible, first backup all your data.
- Disable all NDAS devices.
- Uninstall the present driver.
- Install the new driver.
- Register the NDAS devices again.
- Mount the NDAS devices.
- You should now be able to use the NDAS devices again.

PC Command Line Utility

For advanced users on a PC, there is an option to run the NDAS software from a command line interface.

- Open the command line and type following:
cd C:\Program Files\NDAS\System
(folder may vary depending on driver being used)
- Type ndascmd.exe, which will load the command line interface for the NDAS software

The Syntax for the interface should be as follows:

ndascmd <command> [parameters]

The supported commands are as follows:

- register <name> <device id without dash> [write key]
- unregister <device number>
- list devices
- list logicaldevices
- mount <logical device number> [ro|rw]
- unplug <logical device number>
- unmount <logical device number>
- activate <device number>
- deactivate <device number>

Chapter 6 - Technical Specifications

File Formats

Following is an introduction to some of the file formats, which are supported by the Box Office media player.

.ISO

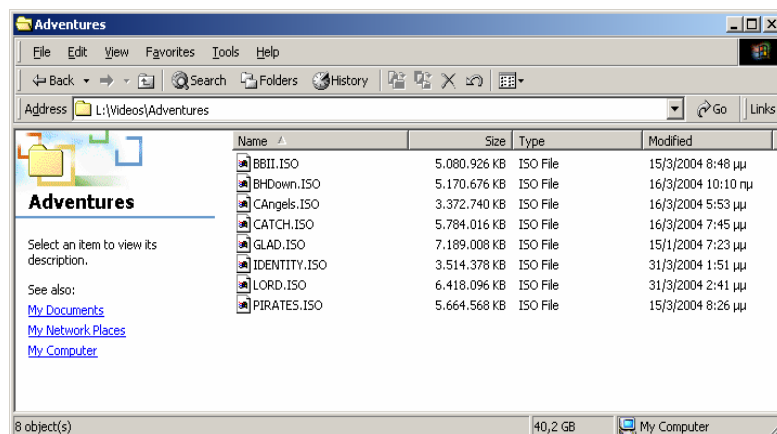
Only with the Box Office can you create your own virtual DVD library by storing your private collection of DVDs (using the .ISO format) and watch them as if they were running from the original DVDs.



Once the movies are stored on the Box Office media player as .ISO files, you can play them just like an original DVD with full DVD functions: Menu, Chapter selection, Audio stream selection, Subtitle selection, Fast Forward, Fast Backward, Slow, Pause, Step Forward, Repeat and Search are all included.

An ISO file is the image file on a DVD disk. ISO image files are widely used to store, then transfer DVD contents through the Internet. ISO is a common DVD image format for DOS, Windows, Mac OSX, Linux and other operating systems. The Box Office media player can play the .ISO file exactly the same as if it was running from the original DVD.

The produced files are huge in size, but this is not a limitation for the Box Office, as it supports any of the FAT32, NTFS or HFS+ file systems. **Note: The largest single file size on FAT32 is 4GB! If your ISO is bigger than that, you will have to format your hard drive using NTFS or HFS+.**



The adjacent figure depicts various .ISO movies that have been produced in less than 12 min each.

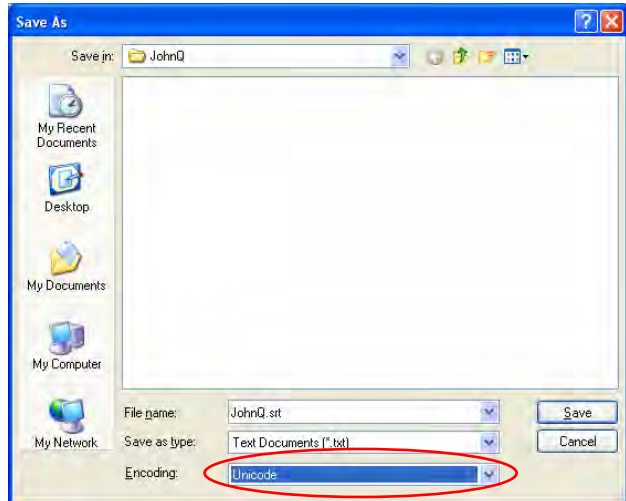
The Box Office is not designed or intended to, and may not be used to violate any copyrights or other IP (Intellectual Property) rights. Each user of the Box Office may only use it in connection with materials legally owned by or licensed to the user, and only extend such ownership or license rights that will permit such use.

XviD

XviD is an ISO MPEG-4 compliant video codec. It is not a product; it is an open source project which is developed and maintained by groups of people all over the world. The Box Office media player is fully compatible with the XviD Home Theater format and can play any movie encoded with this compression format except files encoded using GMC or Qpel.

If you want to use external text subtitles, we recommend saving them as .srt (SubRIP format) text files. **Please pay attention that in order for the Box Office to display the subtitles, both “movie.avi” and “movie.srt” should be placed in the same directory.**

In order for the Box Office to display the subtitles, **the subtitle file should also be an Unicode file.** To do so, open the .sub, .smi or .srt file with the notepad text editor, select “Save As” and choose the Unicode option from the Encoding combo box. See adjacent image for details.



Specifications

Supported Audio Files Formats	WMA, WAV, MP3, AAC, AC3, OGG
Supported Audio Outputs Formats	Dual stereo analogue audio, SPDIF digital audio (supports compressed Dolby Digital 5.1 and DTS pass through)
Supported Video Files Formats	MPEG-1, MPEG-2 (AVI, VOB, ISO), MPEG-4 (AVI, XviD)
Supported Video Output Formats	NTSC/PAL composite and S-video, analog YPbPr video (progressive or interlaced) scalable up to 1920x1080i or 1280x720p. RGB via SCART. VGA (1024x768)
Languages Supported	English, French, German, Italian, Spanish, Dutch, Swedish, Hungarian, Czech, Polish, Greek and Turkish. Korean, Traditional Chinese, Simplified Chinese, Japanese and Thai require an external font.
Supported Interfaces	RJ-45 100Base-TX Auto MDI/MDI-X, USB 2.0 High Speed
Output Ports	AV multi-connector supporting four (4) cables: <ul style="list-style-type: none"> • Composite RCA, left audio RCA, right audio RCA, S-Video Mini DIN • RGB Colour Component Video 3 RCA, left audio RCA, right audio RCA • SCART (Europe) with RGB support • VGA at 1024x768
	USB 2.0 and Ethernet 100Base-TX (for data transfer to and from computer)
	Transmitter Fiber Optic 8MBps
Input Ports	USB 2.0 and Ethernet 100Base-TX (for data transfer to and from computer)
	IR @ 38KHz
Storage Capacity	Single Parallel ATA 3.5" IDE Hard Drive
File Systems Supported	FAT32, NTFS, HFS+ (Mac OS Extended)
Power Input	AC: 100-240V, 1.2A, 50-60Hz DC: +12V/2A
Dimensions	16.5cm x 16.5cm x 5cm
Operating Temperature/Humidity	0 C to 40 C / 10% to 90% non condensing
Storage Temperature/Humidity	10 C to 30 C / 10% to 90% non condensing

Package Contents

The standard package includes the following:

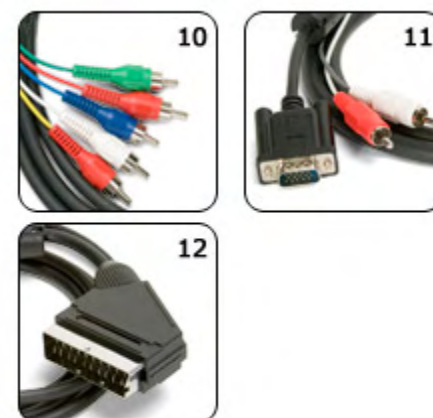
1. Your Box Office media player (no hard drive included)
2. Power Adapter 110/240V auto switching, +12V/2A
3. Infrared remote control
4. Composite AV cable (Composite RCA, S-Video mini DIN, left audio RCA, right audio RCA)
5. SCART to Composite RCA adapter (Europe only)
6. SPDIF optical audio cable
7. USB 2.0 High Speed cable
8. Ethernet cable
9. Utility CD & Manual



Note: Package content may vary, depending on vendor & version. The diagrams may also not fully represent the product that you are using and are there for illustration purposes only.

Optional Cables and Accessories

10. YPbPr AV cable (YPbPr color Component video - 3 RCA, left audio RCA, right audio RCA)
11. VGA AV cable (15-pin female VGA, left audio RCA, right audio RCA)
12. SCART AV cable (SCART for Europe with RGB support)



Note: The diagrams may not fully represent the product that you are using and are there for illustration purposes only.

Safety Information

Before using your Box Office, please carefully read the following paragraphs relating to the safety issues on your device in order to extend its life.

Power on/off precautions

The Box Office remote control provides the power ON/OFF button that controls the power status of your device when connected to the TV. **It is highly recommended to switch the unit off when not in use. In any case, the Box Office media player will switch to stand-by mode if idle for more than 30 minutes.**

When the Box Office media player switches to stand-by, it will indicate it by turning on the System LED. To re-locate the Box Office and connect it to the computer, turn off the device using the ON/OFF switch at the back of the device! We also recommend turning it off by using the ON/OFF switch when not in use for a longer period of time.

Location and placing precautions

Set the Box Office up in a horizontal position and **DO NOT** place any other objects on top of it. Do not place the unit on an amplifier or other equipment that can become hot, as the device itself has a heat sink at the bottom.

Avoid positioning your Box Office in the following places:

- Locations with direct sunlight, next to radiators, other sources of heat, or in vehicles that are parked directly in the sun with the windows and doors closed.
- Locations with very high temperature (more than 35° C) or humidity (more than 90%).
- Very dusty or sandy locations.
- Locations subject to vibration, shock, or with a sloping base.

Electricity and power plug

Careful attention must be paid to the following points in order to avoid operational faults with the equipment and to prevent electric shock, fire, and injury:

- When removing the power cable from the socket, always pull on the plug and never on the cable.
- Do not connect and remove the power cable with wet hands.
- Keep the power cable away from heaters.
- Never try to repair the power cable yourself or to modify it in any way.
- Clean dust, dirt, and etc. from the power plug at regular intervals.
- If the unit is dropped or becomes damaged in any other way, unplug the power cable.
- If the unit should emit smoke, unusual smell, or noise, switch it off and unplug the power cable. In such cases, please contact your dealer.
- If the unit is not used for extended periods, then the power plug should be removed from the socket.

Cables

Use only the cables supplied or recommended by your vendor in order to avoid the risk of malfunction, electric shock, and possible interference of the device.

Chapter 7 - Appendix

FAQ

Q: No Files Found!

A: This message may occur for several reasons. Please check following:

- Does the folder contain any files at all?
- Are the files in the correct folder (example: JPG → Pictures)
- Did you setup all of the 4 prerequisite folders and name them correctly?
- Did you format the hard drive using a PRIMARY partition?
- Did you connect the hard drive properly (MASTER) and is it working via USB?
- Did you use the safe removal process on the computer when disconnecting it?
- If none of the above help, turn off the device, remove the power supply and connect it once more before you contact your vendor for technical support.

Q: Scrambled file names □□□□

A: The Unicode font is missing on your hard drive. See “Font Support” in chapter 2.

Q: Blue Screen

A: Please confirm that your device is plugged into the correct input on your TV set. Make sure you have selected the above input to display on the TV set and that the switch on the Box Office is set to TV. If this does not solve the problem, use the “TV out” on your remote control of your Box Office and toggle through the different video output formats until an image appears on the TV set.

toggling “TV out” does not save the video settings. To do so, select the "Video Settings" from the Settings menu, choose the correct output and press “Home” to save your new settings.

Keep in mind that it takes about 10-20 seconds for the Box Office media player to show up on your TV set after the power has been turned on.

Q: No sound

A: By default, the Box Office is using the analogue audio output. If you are using a digital amplifier with digital input, go to “Settings” and change the audio output to digital.

Q: Playback of HD (High Definition) files

A: This device does not support playback of HD (High Definition) files (example: WMV9).

Q: Playback of DAT files

A: DAT files can not be played back on the Box Office media player but you can rename the “.dat” extension to “.mpg” on your computer and playback the file as MPEG-1 movie.

Q: How to get the best video quality

A: From best to worst in regards to the video quality and connection, the order is as follows:

- Component YPbPr 1080i
- Component YPbPr 720p
- Component YPbPr 480p
- Scart RGB
- S-Video
- Composite

S-Video and composite cables are included in the standard package. For additional and optional SCART or component cables, please contact your vendor.

The video quality will also depend on your content, whereas MPEG-2 and 4 will be superior to MPEG-1.

Technical Questions

For RMA and other questions, please contact your vendor or check out their online support area! Make sure to include as many details as possible including firmware version and explain the problem to your vendor.

Before you contact your vendor, read through the FAQ on the previous page and make sure you are using the latest firmware.

About this Manual

This manual was written using the model BOX-LNU2UXS and the firmware version v2.0.16.60. Images and descriptions might slightly vary between this manual and the actual product you have.

© Copyright 2007 by Macpower & Tytech Technology Co., Ltd. all Rights Reserved

The information contained in this manual is believed to be accurate and reliable. Macpower & Tytech Technology assumes no responsibility for any errors contained in this manual and reserves the right to make changes in the specifications and/or design of this product without prior notice. The diagrams contained in this manual may also not fully represent the product that you are using and are there for illustration purposes only. Macpower & Tytech Technology assumes no responsibility for any differences between the product mentioned in this manual and the product you may have.