



# DigitalDoc3

*User Manual*

*Version 1.0*

# Contents

<b>Chapter 1</b>	<b>Introduction.....</b>	<b>1-1</b>
	About This Manual.....	1-1
	The DigitalDoc3.....	1-1
	Features.....	1-2
	What's Included.....	1-3
<b>Chapter 2</b>	<b>Installation.....</b>	<b>2-1</b>
	Planning Your Setup.....	2-1
	Installing The DigitalDoc3.....	2-2
	The Temperature Sensors.....	2-2
	Connecting The Fans.....	2-3
	The Power Cable.....	2-3
<b>Chapter 3</b>	<b>Setting Up Your DigitalDoc3.....</b>	<b>3-1</b>
	The Main Display Area.....	3-1
	Button Functions.....	3-1
	Factory Presets.....	3-2
	Getting Started.....	3-2
	Step-By-Step Instructions.....	3-3
<b>Chapter 4</b>	<b>Using Your DigitalDoc3.....</b>	<b>4-1</b>
	Overview.....	4-1
	Three Modes of Operation.....	4-3
	Set-Up Mode.....	4-3
	Normal Operating Mode.....	4-3
	Scan Mode.....	4-4
	Alarms and Warnings.....	4-4
<b>Chapter 5</b>	<b>Additional Documentation.....</b>	<b>5-1</b>
	Technical Specifications.....	5-1
	Frequently Asked Questions.....	5-2
	Printable Worksheet.....	5-6

# Chapter 1 Introduction

## About This Manual

Throughout this manual you will see icons on the left margin that denote either Notes or Cautions as outlined below:



Denotes a Note or Tip. These will give you Tips, Notes or Good Ideas on how to use and set up your DigitalDoc3 more effectively.



Denotes a Caution or Warning. Pay particular attention to these as they will prevent you from harming your system or DigitalDoc3.

This manual is arranged in a logical progression from installing your DigitalDoc3 to setting it up and finally using it. There are two DigitalDoc3 models, the **MP-TC04AV** and **MP-TC08AV**. The only difference between them is the number of sensors and fans that can be monitored. The model **MP-TC04AV** comes with 4 sensors and can control and monitor 4 fans, while the model **MP-TC08AV** comes with 8 sensors and can control and monitor 8 fans. This manual references the Model **MP-TC08AV**.

## The DigitalDoc3

**The new generation DigitalDoc3 thermal sensor** is the only automatic monitor of system temperature, fans, and voltage, simultaneously scanning eight temperature settings and eight fans, as well as the stability of the +5 or +12 VDC power supply. In addition, you can set the cycle time to automatically scan each channel's temperature, fan speed and rotation status. If the temperature rises to the adjustable set-point value, the fan for that channel will automatically switch on to pull cool air in or hot air out, effectively lowering the temperature. In the event that the temperature continues to rise (exceeding 5° C above the set-point), a warning beeper will be activated. This alerts the user or MIS, to use this additional time to decrease the loading of the computer equipment which is causing the excessive temperature problem, thus preventing valuable data loss and system damage.



## Features

**Monitoring temperature range:** 0-100 degrees C (32-212 F). User can adjust the set-point value. If the temperature reaches the set-point, the fan for that channel is automatically activated; after the fan has been turned on, if the temperature continues to rise (an additional 5 degrees C), the unit will issue a warning signal.

**Monitors both +5 and +12 VDC power sources;** the power tolerance warning can be set to any of four values: 5%, 10%, 15%, and 20%.

**No batteries required;** connects directly to your equipment's +12 VDC power source. Never trouble with changing batteries.

**LCD back-lighting** function convenient for diagnostic work and for adjusting the settings. Back-lighting function can be set to always be on, or to just be on when in use, reducing electricity use and environmental energy needs.

**Uses EEPROM memory chip** to save all settings. When equipment is turned on, there is no need to re-enter settings.

**Unit easily installs** in any 5.25" opening; takes up almost no space. Can be used with any +12 VDC fan with maximum start-up current requirement of up to 200 mA.

**Supports up to eight fans(Model MP-TC08AV Only)**, while simultaneously monitoring fan speed (rpm).

**All connected fans can be activated** when the power is turned on, or only a portion of them. This reduces energy consumption and creates a quieter work environment.

**Comes with override fan control function.** User can turn on fan at any time with the FORCE function, without having to wait for the temperature to rise.

**The unit has four or eight set-point selection** (depending on the user's requirements).

**Facilitates objective scientific analysis** or MIS investigation; quickly clarifies problem source in equipment or system.

**Especially suitable for DIY applications**, the DigitalDoc3 can be used with RAID towers, servers, Industrial PCs, and personal computers.

## What's Included

The DigitalDoc3 comes in two models, the **MP-TC04AV** and **MP-TC08AV**. Each model should come with the following:

### MP-TC04AV

DigitalDoc3 Unit  
Screws(2 types - 5pcs each).....10pcs  
Thermal Tape..... 4pcs  
Sensors..... 4pcs

### MP-TC08AV

DigitalDoc3 Unit  
Screws(2 types - 5pcs each).....10pcs  
Thermal Tape..... 8pcs  
Sensors..... 8pcs

Model MP-TC08AV Shown Here:



## Chapter 2 Installation

### Planning Your Setup



**Warning:** Do not connect a fan that is rated above 200mA ( .2 Amps.) Or 2.4 Watts as it will damage your DigitalDoc3.

The DigitalDoc3 comes with up to 8 Temperature Sensors(Thermistors) and can control and monitor the speed (RPM) of up to 8 fans. The DigitalDoc3 can control all kinds of +12 VDC fans whose current requirements do not exceed 200mA or .2 Amps, regardless of whether the fan has a 2-pin or 3-pin connector. To find out if your fan will work with the DigitalDoc3, look at the face of the fan. There should be some specs about the fan printed on there. The Amp rating should be at or lower than .2 Amps or 2.4 Watts. In order to use the Fan Speed (RPM) Monitoring function, your fan must have an RPM Sensing Control, usually identifiable by a Yellow wire on a 3-pin connector. **Please take note if you are hooking up a fan which has no RPM Sensing (2-pin ) as you will have to Disable that fan's monitoring function in the DigitalDoc3's Set-Up Mode** (Described later in Chapter 3 [Setting Up Your DigitalDoc3](#)). You can use the [Printable Worksheet](#) in Chapter 5 [Additional Documentation](#) to record which fans have RPM Sensing and which do not.

The fans are controlled by either Temperature Set-Points (A temperature you set at which the fan will come on) or manually, by setting the fan to always be on. A Temperature Set-Point is reached when its' Temperature Sensor (Thermistor) hits the Temperature you set for that Sensor. This is all done through the Set-Up Mode which will be explained in detail in Chapter 3 [Setting Up Your DigitalDoc3](#).

Before you begin installing your DigitalDoc3 you may want to plan how you are going to set up your system. Since each Temperature Sensor has a corresponding fan, you will want to match them up so if a Temperature Sensor hits your Temperature Set-Point the corresponding fan will come on. Here is an example of how you would set up one of your fans and Temperature Sensor:

**Example:** Assume you have a Video Card Cooler(a fan that sits atop your Video Card to cool down its' chipset). You attach the Number 2 Temperature Sensor to your Video Card's Heatsink to monitor the Heatsink's Temperature. You would then plug your Video Card Cooler's fan into the Number 2 fan Connector on the DigitalDoc3 and set the DigitalDoc3 to turn that fan on when the Number 2 Temperature Sensor hits, say 40 degrees Celsius.

You would repeat this for as many fans and Temperature Sensors as you are going to use. You may want to route one Temperature Sensor outside your case to record the room's ambient temperature. This will give you a good idea of your cooling setup's effectiveness. There is a [Printable Worksheet](#) at the end of this manual with a Table in which you can record where you put your Temperature Sensors and which fans are connected to which DigitalDoc3 fan Connectors. This will be useful once you close up your case as you will not be able to see where everything is. It is highly recommended that you fill out the worksheet, even before you install the DigitalDoc3 as noted above.



**Tip:** It is a good idea to mark each end of all your Temperature Sensors with the number of that Sensor's Channel. This way if you ever have to disconnect either side you will know which Sensor goes with which Channel without following the lines through your system.



## Installing The DigitalDoc3

### The Temperature Sensors



**Warning:** Never put a temperature sensor in between a processor or silicon chip and a heatsink. While this may give you a more accurate temperature, it will decrease the heatsink's ability to cool down your chip.



**Tip:** It is recommended to first attach your sensors to their pins **Fig. 2-5**, feed them through the external bay, put the DigitalDoc3 temporarily in the bay, hook the fans and power cable up, install it in the bay using the screws that came in the box and then finally to attach the sensors to their heat sources and/or locations.

There are two types of Temperature Sensors included with your DigitalDoc3. The flat type, **Fig. 2-1**, is good for attaching to any flat surfaces, such as the motherboard's chip set, See **Fig. 2-4**. The bulb type, **Fig. 2-2**, can be used in many ways. You can insert it in between the fins of a heatsink, leave it in an open area to monitor the surrounding temperature, or also attach it to a flat surface such as the top of your hard drive. Use the included Thermal Tape, **Fig. 2-3**, to attach the sensors to heat sources.

If you followed the tip of marking each sensor's channel, attach it to the corresponding **Two-Pin Connector** on the back of the DigitalDoc3 Shown in **Fig. 2-5**. **Note:** Either orientation can be used when connecting the sensors.

**Fig. 2-1**



**Fig. 2-2**



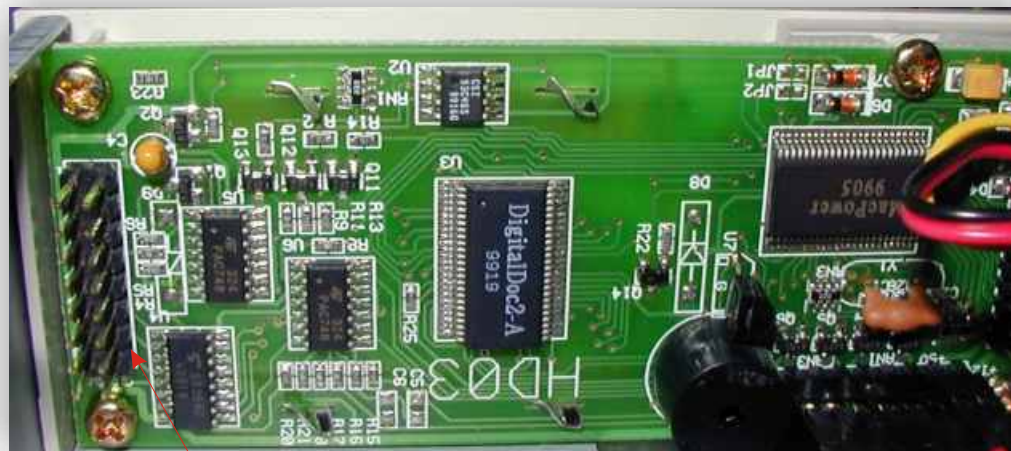
**Fig. 2-3**



**Fig. 2-4**



**Fig. 2-5**



**Two-Pin Connectors**

## Installing Your DigitalDoc3

### Connecting The Fans

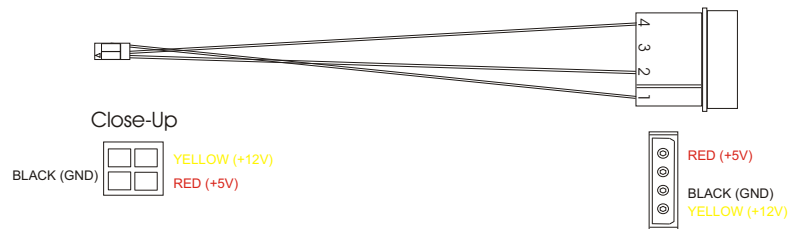
Each Fan Connector has three wires, red, black and yellow. The red wire is the power (+12VDC), black is the ground (GND) and the yellow is the RPM Speed. Each DigitalDoc3 comes with a 40 x 40 mm fan, designated at the factory as Fan 1. It is connected to the number one temperature sensor. All other Fan Connectors are clearly marked as Fan 2, Fan 3, Fan4... Although there should be only one way to attach each Fan Connector to each Fan, make sure the wires are matched up correctly. Unless you are connecting a 2-pin fan, red should match with red, black with black and yellow with yellow. If you are using a 2-pin fan the yellow wire will not be used.

### The Power Cable

The DigitalDoc3 Thermal Sensor is designed to connect to a +12 VDC power source-no batteries are required. One end of the power source cable supplied with the unit is a standard 4-pin female connector; it is designed so that there is no way to incorrectly insert it. But because the connector at the other end may have the same pin arrangement, this preventive function may not apply. If the power source cable is connected incorrectly, there is a chance that some components of the PCB board will be burned up, so it is necessary to be especially careful. The following figure shows the correct configuration:



**Tip:** Your DigitalDoc3 also acts as a Hard Drive Cooler. You can mount a 5 1/4" hard drive assembly right on to the DigitalDoc3's bracket. You don't lose a bay and cool your hard drive off. Cool!



### Install The DigitalDoc3 In An Open 5 1/4" Bay

After you attach the power cable you can now mount the DigitalDoc3 in any open External 5 1/4" Bay. Install it as you would any 5 1/4" device with the screws provided in the package.



## Chapter 3 Setting Up Your DigitalDoc3

### The Main Display Area



**Note:** In Fig. 1 the Back-light is off. This can be set to turn off when not in use to conserve energy or you can have it lit all the time.



Fig.1 LCD Display - Backlight Off

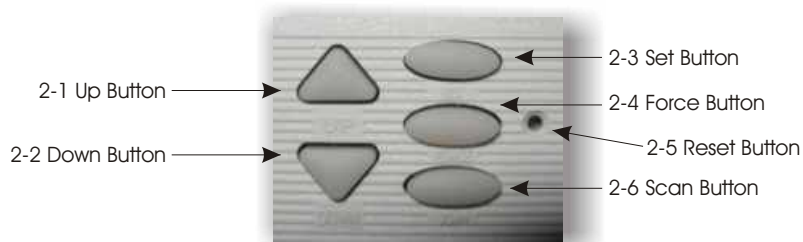


Fig. 2 DigitalDoc3 Buttons

### Button Functions

We are now going to set up the DigitalDoc3 and get it ready for use. But first let's go over the Button Functions as displayed in Fig. 2 as they relate to Set Up:

**2-1 Up Button:** The Up button will change the Temperature Set-Points and Voltage Tolerance settings as well as, let you choose different options.

**2-2 Down Button:** Same as Up only Down.

**2-3 Set Button:** This is the button we need to use now to set up the DigitalDoc3.

**2-4 Force Button:** This will force all your fans to come on.

**2-5 Reset Button:** This will set all the settings back to the default factory values.

**2-6 Scan Button:** Used to go into Scan Mode...More on that later.

Figures 1 & 2 will be fully explained in [Chapter 4 Using Your DigitalDoc3](#).

## Factory Presets

Before the DigitalDoc3 leaves the factory the values are set to the following:

All Temperature Set-Points are set to 50 °C.

Only Fan number 1 has been “turned on” and its’ RPM monitoring enabled. We will set all the other fans during this set up procedure.

The power tolerance warning range is set at +5% (or +0.25 V) for +5 VDC, and for +12 VDC, the range is +0.6 V.

If you make a mistake when setting the system values, you can change all the values back to those of the factory settings. This is accomplished by pressing the SET button before the power is turned on. After this, turn the power on again and wait until you hear the sound of two beeps, which shows that the resetting is complete. Or when the power is on, press the RESET button, then press the SET button; afterwards press the RESET button again, and the two beeps indicate that the resetting is complete.



**Tip:** You can leave Set-Up Mode at any time by not pressing any button for 5 seconds. All values will automatically be saved.



**Note:** Have your Printable Worksheet in front of you when you go through the set up procedure. It will help you throughout the set up procedure by showing you which fans are RPM Sensing or not.

## Getting Started

To begin the set up procedure you need to press the **Set Button** on your DigitalDoc3. This will bring you into Set-Up mode and will allow you to change all the settings according to your setup. At any time, if you do not press a button within 5 seconds, the DigitalDoc3 will return to Normal Operating Mode and you will have to restart the set up procedure by pressing the **Set Button** again.

Here is a basic flow chart outlining the steps involved in setting up your DigitalDoc3. Later in this chapter we will go through these Step-By-Step. Each time you press the **Set Button** you will continue on to the next setting. You will use the **Up** and **Down Buttons** to change the settings such as Fan On-Off, RPM Sensing Enabled or Disabled, Temperature Levels and Power Tolerance Levels

- A)** Celsius (C) or Fahrenheit (F) temperature unit selection.
- B)** Individual channel set-point selection, starting with the temperature setting for channel 1 (CH1) and proceeding through the set-points of all channels.
- C)** Fan rotation monitoring and rotation control setting, starting from fan 1 (FAN1). When initially setting the fan rotation control function, the screen will display either [En] or [Dis]. [En] indicates that the fan speed monitoring function is on; [Dis] indicates that it is off for this fan. Next is the override fan control, with the display showing either [On] or [Off]. [On] indicates that the override function is on (i.e., the fan is turned on whenever the power is turned on to the unit); while [Off] indicates the override function is off, and the fan waits for the activation command from the temperature sensor.
- D)** Four levels of +5 VDC power tolerance range settings: 0.25, 0.5, 0.75, and 1.0 V.
- E)** Four levels of +12 VDC power tolerance range settings: 0.6, 1.2, 1.8, and 2.4 V.

## Step-By-Step Instructions

The first press of the **Set Button** will present you with the following display - **Fig. 3-1**. This means that all temperatures shown on the DigitalDoc3 will appear in Celsius. Each time you want to move to the next function press the **Set Button**.



**Note:** Pressing the **Scan Button** during Set-Up Mode toggles the Back-light Function On and Off. When it is set to off it will only turn on when in use.



**Fig. 3-1**

### Step 1: Changing Temperature Units From Celsius (°C) to Fahrenheit (°F)

The LCD will show a flashing °C **Fig. 3-2** or °F **Fig. 3-3** symbol. Press the **Up** or **Down Button** once to change the units.



**Fig. 3-2**



**Fig. 3-3**



**Tip:** If you hold down a button and do not release it, the value quickly increases or decreases. When you reach the desired set-point value, release the button.

### Step 2: Temperature Set-Points

Press the **Set Button** again to start selecting the Temperature Set-Point values. These are the temperatures you set at which the fans will come on. Each time you press the **Set Button** the next channel (CH1....CH8) will be displayed. Use the **Up** and **Down Buttons** to change the temperature values. **Fig. 3-4** shows Channel 1 (CH 1)'s Temperature Set-Point is set to 50 degrees Celsius.

**Note:** The range of temperature values for Celsius is 0 to 100 C; and for Fahrenheit is 32 to 212 F.



**Fig. 3-4**

## Step-By-Step Instructions (Cont.)

### Step 3: Fan Monitoring and Rotation Settings

Pressing the **Set Button** again will take you through the Fan Monitoring and Rotation Settings procedure. Each fan's setting includes fan speed monitoring and fan override rotation control.

**A)** The fan speed monitoring function can be turned on with [En] **Fig.3-5**, and off with [Dis] **Fig.3-6**. Use the **Up** and **Down buttons** to change the setting from Enabled [EN] to Disabled [DIS], and remember do not Enable a fan's monitoring function if it does not have an RPM Sensing Control (**check your worksheet**). Doing so will result in an alarm being set off because the DigitalDoc3 thinks the fan is not working or its' RPM has dropped below 500.

**B)** Pressing the **Set Button** again takes you to that fan's rotation or override setting. The LCD displaying [On] **Fig.3-7** or [Off] **Fig.3-8** indicates that you can set the fan's rotation control; [On] which forces the fan on all the time, while [Off] turns the fan off, allowing this fan to be controlled by your Temperature Set-Point. Again use the **Up** and **Down Buttons** to change the setting from [On] to [Off].

\*\*If you want this fan to turn on every time you turn on the computer, then you must set this item to [On], forcing the fan to turn on.

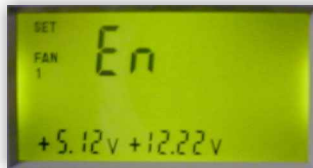
**C)** Pressing the **Set Button** again will move you to your next fan. Repeat steps **A** and **B** for as many fans as you have connected.



**Warning:** The rotation monitoring function depends on the rotation signal put out by the fan. If you use common 2-pin fans or fans with the signal disabled, then you must turn off the rotation monitoring function by selecting [dIS], or a warning alarm will sound.



**Caution:** If you connect your main processor's fan to the DigitalDoc3 you should set that fan's Rotation setting to [ON]. This way the fan will be forced on every time you use your computer. You may want to do this for all your vital fans.



**Fig.3-5**



**Fig.3-6**



**Fig.3-7**



**Fig.3-8**

## Step-By-Step Instructions (Cont.)

### Step 4: Power Tolerance Settings

Pressing the **Set Button** again will now take you to the final procedure, the Power Tolerance Settings. There are two settings, the +5 VDC Tolerance **Fig. 3-9** and +12 VDC Tolerance **Fig. 3-10**. Use the **Up** and **Down Buttons** to cycle through the range of values.

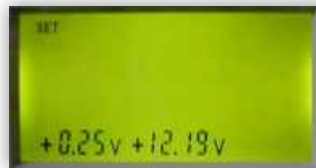
**A)** Set the +5 VDC tolerance to one of the four range values: +0.25, +0.5, +0.75, and +1.0 V.

**Note:** For most electronic circuits using +5 VDC working power with a highly stable source, we suggest that the tolerance be set at 0.25 V (5%).

**B)** Press the **Set Button** again to reach the +12 VDC tolerance setting.

**C)** Set the +12 VDC tolerance to one of the four range values: +0.60, +1.20, +1.80, and +2.40 V.

**Note:** Most +12 VDC sources are used for hard disk drive and CD drive motors, or for fans. When no devices are running, the power needs are not excessive, and surges in the power will not be too great. But when the loading is higher, the system can generate large changes in the power source, especially evident for example, when a CD drive spins-up. Outside a certain range in the power supply, your system may experience errors in operation, so you must pay attention to the power tolerance range setting.



**Fig.3-9**



**Fig.3-10**

Finally, pressing **Set Button** again will bring you out of Set-Up Mode and return you back to Normal Operating Mode.

## Chapter 4 Using Your DigitalDoc3

### Overview



**Note:** In Fig. 1 the DigitalDoc3 is in Normal Operating Mode with the Back-light off.



**Fig.1** LCD Display - Back-light Off

### The Main Display Area

**Fig. 1** shows the DigitalDoc3's Main Display Area. Depending on what mode you're in, certain indicators and icons will be visible or off. As an example Fig. 1 shows the following:

- A) It is in Normal Operating Mode.
- B) All 8 Fans are currently running.
- C) Temperature Sensor 4 (CH 4) has a current temperature of 26.3 degrees Celsius.
- D) The +5 VDC is currently at 5.08 Volts.
- E) The +12 VDC is currently at 12.16 Volts.

**1-1** Set display: Indicates the DigitalDoc3 is in Set-Up Mode.

**1-2** Temperature display: Indicates actual temperature or set-point temperature.

**1-3** Fan display: Indicates situation with fan operation or fan speed.

**1-4** Fan rotation status indicator area: Each number refers to a given monitoring channel, and indicates fan rotation status. A lit number indicates that the fan is currently turning; a flashing light indicates that the fan is possibly jammed.

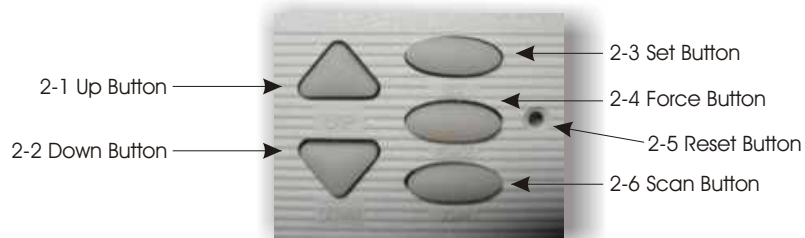
**1-5** Voltage indicator area: Indicates the monitoring of the +5 or +12 VDC power source. In the Set-Up mode, indicates the voltage tolerance range.

**1-6** Temperature/Fan Speed units: Shown in the main display area, and includes all units in use, degrees Celsius (C) or Fahrenheit (F), and fan speed (RPM).

**1-7** Current Channel (Sensor): each number refers to a given monitoring channel, if a sensor is connected. A lit number indicates the current measured temperature of the sensor; a flashing light indicates that the temperature has exceeded the set-point.

**1-8** Fan rotation indicator area: during normal operation or scanning, if the set-point temperature has been exceeded and the fan is turned on, the fan icon will then rotate.

## Overview (Cont.)



**Fig. 2** DigitalDoc3 Buttons

## Button Functions

The DigitalDoc3 has 5 buttons and a reset pin hole. Outlined below are all the buttons functions.

**2-1 Up Button:** In Normal Operating Mode the **Up Button** is used to change the current Temperature Sensor (Channel). In Set-Up Mode the **Up button** will change the Temperature Set-Points and Voltage Tolerance settings, as well as, let you choose different options.

**2-2 Down Button:** Same as Up only Down.

**2-3 Set Button:** While in Normal Operating Mode, press the **Set Button** to get into Set-Up Mode. In Set-Up Mode each time the button is pressed it goes to the next function. When the final function is reached, the system will save the values, or if you do nothing, as mentioned earlier, for 5 seconds, the system will automatically exit Set-Up Mode, saving the values at that time.

**2-4 Force Button:** This will force override your Temperature Set-Points and automatically turn all your fans on. If pressed again it will return you to Normal Operating Mode.

**2-5 Reset Button:** This will set all the settings back to the default factory values.

**2-6 Scan Button:** Used for entering Scan Mode; depends on the indicated sensor channel and each fan speed. If you're in Set-Up Mode, this button is used to turn on or off the continuous LCD back-lighting function.



## Three Modes Of Operation



**Tip:** While in Normal Operating Mode, pressing the Up or Down Button will quickly take you to and display the next Channel.



**Fig.1** LCD Display - Back-light Off - Normal Operating Mode

## Set-Up Mode

Your DigitalDoc3 has three basic modes, Set-Up Mode, Normal Operating Mode, and Scan Mode. Set-Up Mode can be reached any time by pressing the **Set Button**. Since we've already covered Set-Up Mode in Chapter 3 [Setting Up Your DigitalDoc3](#), we'll refer you back to that chapter for more information.

## Normal Operating Mode

Normal Operating Mode is the mode you will use most often and also the mode the DigitalDoc3 reverts back to from Set-Up and Scan Modes. During normal operation your DigitalDoc3 displays what fans are currently running (1-4) and the current Voltage readings (1-5). In Normal Operating Mode the DigitalDoc3 scans each Temperature Sensor (Channel) and displays it for 5 seconds, completing a cycle every 40 seconds. If you press the **Up** or **Down Buttons** the DigitalDoc3 will display the next Temperature Setting value. As it cycles through all 8 Temperature Sensors (Channels), the Fan Rotation (1-8) status icon will spin if the corresponding fan is currently running.



**Note:** A "Channel" refers to both the Current Temperature Sensor and also its' corresponding fan. For Example, in **Fig. 1**, it is currently displaying Channel 4 (CH 4) and the number 4 Temperature Sensor's reading is 26.3 degrees Celsius.. It is also showing the current status of Fan number 4 (1-8).

## Three Modes Of Operation (Cont.)



Fig.3 LCD Display - Back-light On - Scan Mode



**Note:** It takes approximately 80 seconds to scan all 8 Temperature Sensors and 8 Fan RPM Speed channels. If a fan is not running 0 RPM will show for that Channel.



**Tip:** If an Alarm is sounding you can press any button on the DigitalDoc3 to turn it off at any time.

### Scan Mode

Scan Mode **Fig. 3** is reached by pressing the **Scan Button** on your DigitalDoc3. In Scan Mode the DigitalDoc3 scans through all your Temperature Sensor values and Fan Speed (RPM) for each fan. *In Fig. 3 it is currently displaying the RPM reading for Fan Number 2.* It will first cycle through all the temperatures of each Temperature Sensor (Channel). It displays each temperature reading for 5 seconds and then cycles to the next Channel. After it completes all 8 temperature readings (a 40 second cycle) it then begins showing your RPM Speed readings for each fan. It displays each fan's RPM speed for 5 seconds and then cycles to the next Channel. After it completes all 8 channels it returns the DigitalDoc3 to Normal Operating Mode. To begin another Scan Cycle press the **Scan Button** again.

### Alarms And Warnings

#### Excessive Temperature Warning

- 1) When the temperature exceeds the set-point value, the system will activate a warning beeper, and the corresponding channel number will flash.
- 2) Pressing any button turns off the warning beeper; at which time the system will record the warning temperature level.
- 3) After the warning beeper has been turned off, if the temperature in that channel continues to rise another 5 C, then the system will activate the warning beeper a second time.
- 4) If the warning beeper is turned off a second time, then the system will not issue another warning message for that channel, unless the temperature drops back below the set-point, at which time the function is again operable.

## Alarms And Warnings (Cont.)

### Fan Problem Indicator

- 1) Fan problem monitoring is limited to the speed function of active fans.
- 2) When the fan is being monitored, and a discrepancy is discovered in the fan speed, or the speed drops below 500 rpm, the system will activate a warning beeper.
- 3) When the override fan control is in operation, if the fan monitor is not connected, or if the fan has a 2-pin connector, the system will issue a warning beeper. Therefore, if no fan is connected or you are using a 2-pin fan, please turn that fan's monitoring function to [Dis], and there will be no error in operation.
- 4) You can press any button to turn off the fan error warning beeper.

### Power Tolerance Warning

- 1) When the +5 or +12 VDC power source exceeds the setting for tolerance warning range.
- 2) For the +5 VDC standard and a setting of 0.25 V, if the power drops below 4.75 V or exceeds 5.25 V, a warning beeper will sound.
- 3) For the +12 VDC standard and a setting of 0.6 V, if the power drops below 11.4 V or exceeds 12.6 V, a warning beeper will sound.

## Chapter 5 Additional Documentation

### Technical Specifications

<b>Power Source:</b>	Any +12 VDC power source (Standard 4-Pin Connector)
<b>Monitoring Temperature Ranges:</b>	0° - 100° Celsius 32° - 212° Fahrenheit
<b>Number of Temperature Sensors:</b>	MP-TC04AV - 4 Sensors MP-TC08AV - 8 Sensors
<b>Temperature Sensor Resistance:</b>	Between 5 K and 15 K
<b>Temperature Sensor Accuracy:</b>	1 Degree
<b>Maximum Fan Rating:</b>	200mA (.2 Amps) or 2.4 Watts per fan connector
<b>Maximum Number of Fans:</b>	1 Built-In 40x40 MM Fan MP-TC04AV - 3 Additional Fans MP-TC08AV - 7 Additional Fans
<b>40 x 40 MM Built-In Fan Rating:</b>	40mA (.04 Amps) or .5 Watts
<b>Power Sources Monitored:</b>	Both +5 and +12 VDC sources

## Frequently Asked Questions

### Q1. Why would I need a DigitalDoc3?

**A** - The DigitalDoc3 is similar in function to that of the temperature gauge in any automobile. It monitors the temperature levels of up to four units per monitor. The temperature gauge in a car monitors the heat in the engine. It notifies the driver of overheating, and if the temperature continues to increase, will initiate the engine's cooling fan. If the driver does not have this warning, the engine will be damaged beyond repair. Likewise, the DigitalDoc3 monitors the temperature of up to eight different units per monitor, and safeguards the system from overheating, thus protecting your valuable data and hardware.

### Q2. What is the temperature range for the DigitalDoc3?

**A** - The temperature is displayed in Celsius or Fahrenheit degrees, in ranges of 0°C - 100°C or 32°F-212°F. It is accurate to ± one degree.

### Q3. Does the DigitalDoc3 occupy a 5.25" single-slot?

**A** - No, it will not take up any extra space. The DigitalDoc3 is merely a front panel, with a mounting bracket for 3.5" hard drive.

### Q4. Does the DigitalDoc3 require a battery?

**A** - The DigitalDoc3 does not require a battery. This battery-free device receives power directly from the system, however the settings are memorized even when the computer is shut off.

### Q5. How many fans can the DigitalDoc3 monitor and control?

**A** - The Model **MP-TC04AV** can control up to four and model **MP-TC08AV** can control up to 8 12 V fans, which are activated when the temperature exceeds the pre-set level.

### Q6. Can I keep the front-panel fans running continuously?

**A**- Yes, though the fans normally are activated at a pre-set level, there is an option that will allow ALL fans to run continuously.

### Q7. Will the front-panel fans collect a great amount of dust?

**A** - No, there is a filter in front of the fan that prevents the collection of dust. It can be easily removed and cleaned.

## Frequently Asked Questions (Cont.)

### Q8. What is the difference between DigitalDoc3 and a "baycooler"?

**A** - A "baycooler" is a front panel with a few fans that run continuously and are relatively noisy. It is simple in design, and easily copied by competitors. It also does not have a temperature gauge and temperature pre-set level, which are found in the DigitalDoc3. The DigitalDoc3 also has a sophisticated design, making it difficult for competitors to imitate it.

### Q9. What is the difference between DigitalDoc3 and CP-VUE?

**A** - CP-VUE has an LCD display that shows the temperature of one unit in the device. The DigitalDoc3 shows the temperature levels of up to eight units. The CP-VUE also does not have temperature pre-set levels, monitor and control capabilities of the fans, and warning beep signals, all found in the DigitalDoc3.

### Q10. My computer's motherboard already has an LM-75/LM-78 chip, why would I need a DigitalDoc3?

**A** - The LM-75/LM-78 chip is produced by National Semiconductors, and was invented because of the increasing threat of hardware damage due to overheating. Unfortunately, the temperature display can only be read out of the BIOS mode. Once you enter other applications, however, you are unable to read the temperature. It is a passive device, for it does not provide protection or monitoring of the system's temperature, which are functions of the DigitalDoc3. The DigitalDoc3 is a "stand-alone" device that allows the user to conveniently read the temperature at any time and have full control of the fans in the system.

### Q11. I have found a thermal sensor point on the Intel Pentium II board. Can I feed the thermal signal directly into the DigitalDoc3?

**A** - Absolutely, we highly recommend this because the Intel Pentium II will not give you any warnings about taking corrective measures. Once you plug your thermal signal directly into the DigitalDoc3 it serves as the fire alarm for your system and the fire department for your Intel Pentium. The DigitalDoc3 goes beyond Intel in protecting your digital systems.

## Frequently Asked Questions (Cont.)

### **Q12 - I am using a two-pin fan with the DigitalDoc3. Why does the buzzer sound every time I use the force button?**

**A -** When you use a two-wire fan with the DigitalDoc3 you must make sure that you disable the fan monitor before beginning operation. Otherwise the monitor keeps looking for the fan signal, and when it does not receive one, it then sounds the alarm to alert you.

To disable the fan monitor, press the **Set Button** a few times (depending on which model you have) until Fan 1 appears on the screen. Next to Fan 1 with either be EN for Enable or DIS for Disable. If the screen reads EN then press the Up or Down button to advance to DIS. When the screen reads DIS, your fan monitor is now disabled.

### **Q13. I'm a Systems Integrator. I sell lots of RAID towers and I want to add extra fans. What size should I use and can I connect them to the DigitalDoc3?**

**A -** Based on our experience, 80 x 80 mm fans are the most popular in the RAID market. Most RAID cases have space for two extra 80 x 80 mm fans.

### **Q14. My computer already has a heat sink with a cooling fan, so why would I need a DigitalDoc3?**

**A-** The heat sink is found inside your system, and cannot be monitored. The DigitalDoc3 easily monitors the heat sink's fan, alerting you if the fan is not working properly.

### **Q15. Is the DigitalDoc3 really necessary, for instance, can't I just add more fans?**

**A -** With the addition of more fans, running continuously in order to keep the temperature down, the system will always be noisy. You can add more fans, however you will still need a smart device like DigitalDoc3, which activates the fans only when the temperature reaches the pre-set level. (Again, there is also a button provided to run the fans continuously if you so desire.)

### **Q16. I want to install extra fans in my PC cases, what size should I buy and how do I connect it to the DigitalDoc3?**

**A -** Most PC cases have space for an extra 80 x 80 mm fan and connecting it to the DigitalDoc3 is easily accomplished by using a three-wire fan . There are two types available: one is a ball-bearing fan and the other is a sleeve fan. Generally speaking, the ball-bearing fan is of higher quality.



## Frequently Asked Questions (Cont.)

### Q17. Can the DigitalDoc3 be used in RAID towers?

**A** - Yes, the DigitalDoc3 supports any 8 x 8 cm or 200mA current cooling fans and the length of the sensors extend the full range of the RAID tower.

### Q18. Who would need a DigitalDoc3?

**A** - Any system that produces heat would greatly benefit from the installation of a DigitalDoc3. Typical applications include monitoring temperatures in Raid Towers, Servers, High End PCs, High-capacity HDDs, CPUs and external enclosures which hold high-speed and high-capacity drives. However, like an automobile needs a temperature gauge, so does any typical computer need a DigitalDoc3 to monitor and control temperature levels. Thus, the general consumer would be wise in choosing to purchase a DigitalDoc3.



**DigitalDoc3 Thermal Sensor**

## DigitalDoc3 Thermal Sensor Worksheet

Sensor <sup>1</sup>	Placement <sup>2</sup>	Ddoc3 Fan <sup>3</sup>	Computer Fan <sup>4</sup>	Has RPM Sensing? <sup>5</sup>
<b>1</b>		<b>Fan 1</b>	<b>Factory Installed 40 x 40 MM Fan</b>	<input checked="" type="checkbox"/>
<b>2</b>		<b>Fan 2</b>		<input type="checkbox"/>
<b>3</b>		<b>Fan 3</b>		<input type="checkbox"/>
<b>4</b>		<b>Fan 4</b>		<input type="checkbox"/>
<b>5</b>		<b>Fan 5</b>		<input type="checkbox"/>
<b>6</b>		<b>Fan 6</b>		<input type="checkbox"/>
<b>7</b>		<b>Fan 7</b>		<input type="checkbox"/>
<b>8</b>		<b>Fan 8</b>		<input type="checkbox"/>

**Notes:**

- 1) This is the DigitalDoc3's Temperature Sensor Channel.
- 2) Write down where you placed the Temperature Sensors. For Example - *Processor Heatsink*.
- 3) These correspond to the DigitalDoc3's Fan Connectors. Fan 1 is the factory installed 40 x 40 MM fan.
- 4) Write down which fan is connected to the corresponding DigitalDoc3 fan. For Example: **DigitalDoc3 Fan 2 - Computer Fan: 120 MM Front Case Fan**
- 5) Check these boxes if you know the fan has RPM Sensing. This will help you when setting up your DigitalDoc3 in **Chapter 3: Setting Up Your DigitalDoc3**. If the fan does not have RPM sensing then don't check the box. You would then disable [dIS] this fan's RPM Sensing Option in Set-Up Mode.