

Mvisto Lite

User Guide & Manual

Version 1.2



MP3
AUDIO

MPEG-4
VIDEO

JPG
STILL IMAGE

Table of Contents

FEATURES OF MVISTO	1
COMPACT DESIGN.....	1
PC CONNECTION.....	2
TV CONNECTION	2
AUDIO FEATURES	2
VIDEO FEATURES	2
MULTILINGUAL.....	2
REMOTE	3
FIRMWARE UPDATE	3
FORMATTING THE HDD.....	4
FORMATTING ON A PC (WIN2000/XP)	4
FORMATTING ON A MAC (OS X).....	4
TV CONNECTION.....	7
AUDIO SETUP	7
REMOTE CONTROL KEYS	8
MVISTO CONTROL KEYS.....	9
SUMMARY OF REMOTE CONTROL KEYS	10
REMOTE CONTROL BATTERY INSTALLATION	11
MAIN MENU.....	12
PHOTO.....	12
MUSIC.....	12
MOVIE.....	13
FILE.....	13
PHOTO SETUP	14
MUSIC SETUP	14
MOVIE SETUP	15
SLIDE SHOW SETUP	15
PREFERENCES.....	15
SPECIFICATIONS	16
PACKAGE CONTENTS.....	17
STANDARD PACKAGE.....	17
POWER ON/OFF PRECAUTIONS.....	19
LOCATION AND PLACING PRECAUTIONS	19
ELECTRICITY AND POWER PLUG.....	19
CABLES	19
DECLARATION OF CONFORMITY	20



Features of Mvisto

Compact Design

Everything you love about multimedia, movies, music, and photos is brought to you by Mvisto.

Mvisto features a high quality aluminum case to protect your device. The dimensions of Mvisto are depicted in the adjacent figures.

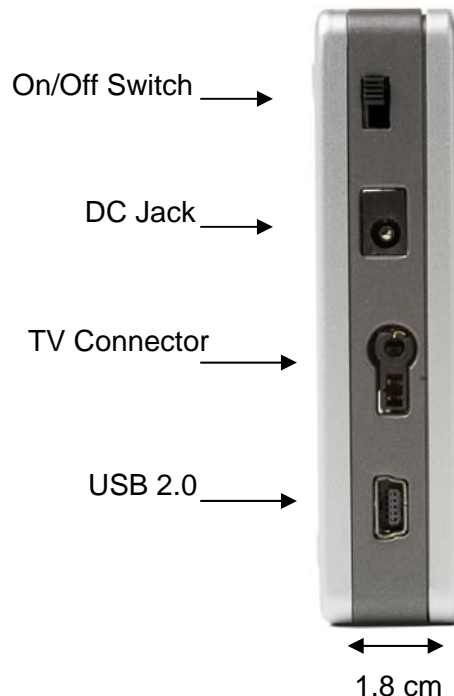
The front panel of Mvisto is transparent, allowing the user to see the infrared receiver and two indicative LEDs:

- PC mode LED: **green** when power-on and **green-yellow** during disk activity
- TV mode LED: **green** when power-on and **yellow** when in stand-by mode. It “blinks” (yellow intervals) to confirm a command, whenever a button on the remote control is pressed.



In the rear panel, there are the following interfaces:

- On/Off Switch: Used to manually turn off the power to the device.
- DC Jack: Provides power when connected to the PC/Mac or TV set.
- TV Connector: Multi-Connector for Analog Audio/Video. This multi-pin connector provides all the Video and Analog Audio signals for your TV set.
- USB 2.0: When connected to a PC or Mac, it provides data transfer to your Mvisto



PC connection

Mvisto can be connected to any PC or Mac via USB interface supporting FAT32 / MS-DOS file formats. With up to 480 Mbps transfer rate (in USB 2.0 connections), you can quickly move large multimedia files from your computer to Mvisto. Please note that you need to use an external power adaptor with your Mvisto.

TV connection

Mvisto provides the optimum multimedia quality in both audio and video outputs when connected to your TV set and audio system. Please note that you need to use an external power adaptor with your Mvisto.

Audio features

- Audio file formats supported: MP3, AC3
- Audio Output Formats: Dual Stereo analog
- Video Output Formats: NTSC/PAL composite and S-video

Video features

Video File formats supported:

MPEG-1 (AVI, MPG, DAT), MPEG-2 (AVI, VOB)
MPEG-4 (AVI, XviD).

XviD compatibility

XviD is an ISO MPEG-4 compliant video codec. It is not a product; it is an open source project which is developed and maintained by groups of people all over the world.

Mvisto is fully compatible with XviD format and can play any movie encoded with this compression format.

Multilingual

Mvisto supports English, Traditional Chinese, and Simplified Chinese

Remote

Mvisto is equipped with a compact elegant infrared remote control. Also control buttons on the device. Please refer to the chapter “TV Connection” for a detailed description of the both these controls.

Firmware update

You will be able to upgrade your device with new features and capabilities by following the firmware¹ upgrade procedure:

- Get the latest update from your vendor's web site.
- Connect Mvisto to your computer using the USB cable and copy the firmware file to any place on your Mvisto hard drive.
- Disconnect the USB cable from the Mvisto, connect Mvisto to TV set. Connect the DC power adapter (Make sure the power switch on the back of the Mvisto is in the on position.)
- **Never disconnect or turn off your unit before the firmware has been completely updated!**
- The Mvisto LED light on the front of the unit will turn from green to yellow once the update is completed.
- This process will take only a minute and your Mvisto will automatically shut down once the update is complete.
- You can now turn off your Mvisto.

Enjoy

Mvisto is the ultimate Portable Digital Multimedia Storage and Player suitable for a wide variety of users:

- Home users who want to build a state-of-the-art, versatile home theatre.
- Stores, Agencies, Exhibitors, and Companies that want audio/visual promotion of their products (indoor advertising).
- Business people on the road who want some entertainment.
- Parents who want to back-up and replay their family videos.
- Movie and music lovers who want to enjoy their favourites at all times.
- People downloading large number of movies and music from the internet.
- Everyone who normally takes a stack of CDs with them wherever they go
- Every computer fan owning a TV, home theatre, or other A/V equipment.

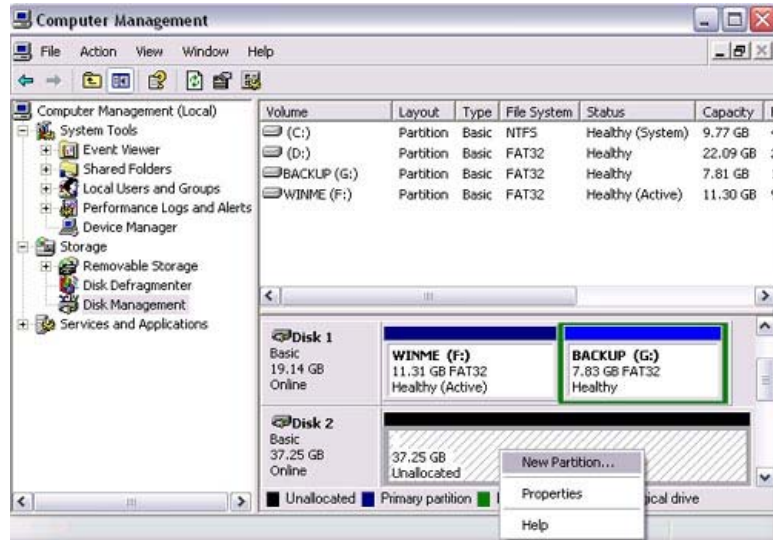
¹ Firmware is the software stored in Mvisto Flash memory that contains the programs running in your device. These programs remain stored even when the system is switched off.

Formatting the HDD

Formatting on a PC (Win2000/XP)

Use the Disk Management Utility

- Right click on “My Computer” and choose “Manage”
- Select “Disk Management”
- Choose the drive you want to format and right click on the Disk or drive field for further commands
- Create a primary partition and format it
- Follow the Wizard instructions

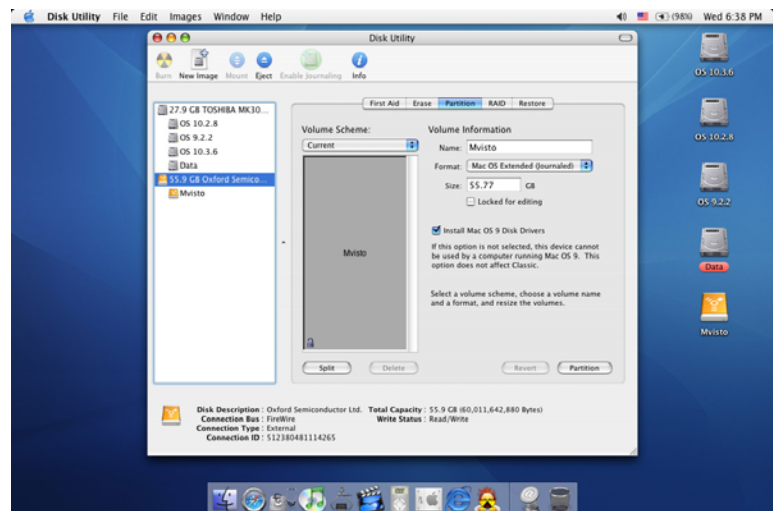


**NOTE: Format your Mvisto using FAT32 (max file size limited to 4GB!).
Your Mvisto supports a maximum of 4 separate partitions**

Formatting on a Mac (OS X)

Mac OS9.2 and earlier, do not support creation of partitions on an external drive. To do that, you will need to purchase additional 3rd party software, connect the drive to the internal IDE bus, or upgrade to OS X. Initializing the drive can be done on all Operating Systems.

For Mac OS X, use the Disk Utility to format and create partitions on your external disk.



- Select “Disk Utility” in the utilities folder
- Choose your external drive and format it as MS-DOS File System

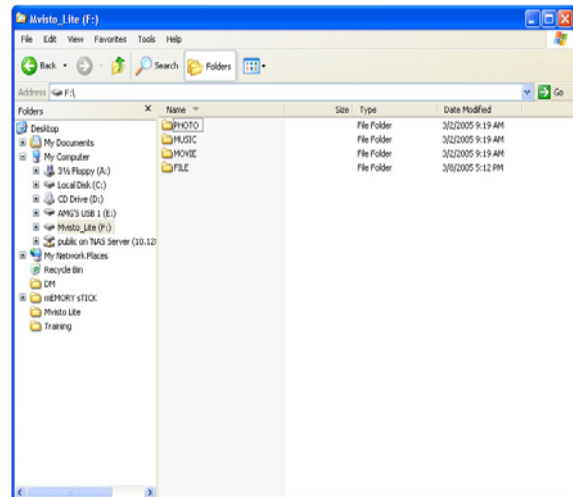
**NOTE: Format your Mvisto using MS-DOS File System (max file size limited to 4GB!).
Your Mvisto supports a maximum of 4 separate partitions**

Creating Directories

For organizing your files on the hard drive, we suggest you to create four (4) folders with the following names shown below. We suggest you to make all folders READ ONLY attribute. This should help to make sure your folders are not deleted by accident. You can however use any names you would like for the folders. Mvisto automatically searches for the file extensions and then places them in the right folder for when viewing on your TV set. Under these directories you can have any directory structure that is convenient to you. Create the folders as shown below, now.

- “**Photo**”: This folder may contain your image files.
- “**Music**”: This folder may contain your music files.
- “**Movie**”: This folder may contain your movie files.
- “**File**”: This folder may contain your files.

If you need a directory to transfer your files from one computer to another, you may create more directories and name them whatever you like. These folders won't affect Mvisto and will not show up when you plug your Mvisto into your Television you will only see the content under the 4 folders listed above.



PC/Mac Connection

Mvisto automatically operates as an external USB 2.0 hard disk when connected to a PC or Macintosh. Use the included USB 2.0 cable to connect your device to the computer system. Your system will automatically recognize Mvisto as an external hard disk in which you can copy any file(s) you want (music, movie, picture, and/or data).

It is strongly recommended to empty the “Recycle Bin” after your file(s) deletions to free the HDD space.

Mvisto supports FAT32 with up to 480 Mbps transfer rate (in USB 2.0 connection). If your computer system does not have a USB 2.0 interface, but only USB 1.1, you will receive a warning.

You can still use the device with USB 1.1, but with a slower performance level.

Mvisto is an external USB 2.0 hard disk device that can be connected to a variety of Operating Systems supporting the USB interface:

- Win98/SE (Install driver from CD first)
- Windows Me/2000/XP
- Mac OS9, OSX

NOTE: You need to use the external power adaptor when connected to the computer.

“Photo”: Copy your favorite image files to this folder.

“Music”: Copy your favorite music files to this folder.

“Movie”: Copy your favorite movie files to this folder.

“File”: Copy your favorite files to this folder.

NOTE: We suggest you give the folders listed above the READ ONLY attribute so they are not accidentally deleted. Under these directories you can have any directory structure that is convenient to you.

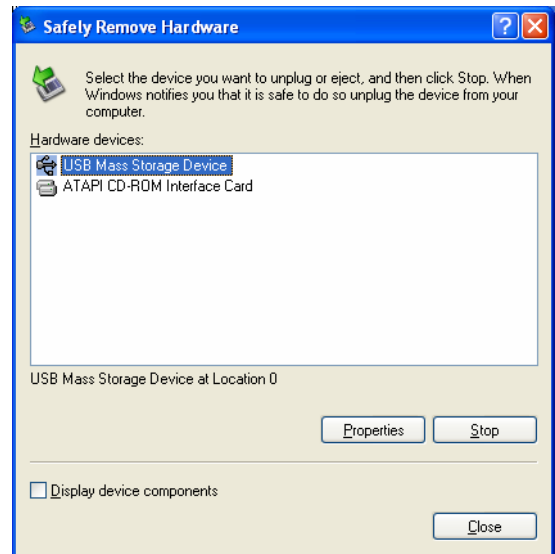
If you need a directory to transfer your files from one computer to another, you may certainly create more directories and name them whatever you like. These folders won't affect Mvisto but will NOT show up on your TV screen!

How to Safely remove Mvisto from the Computer

In order to safely remove your Mvisto from your system, please follow the same procedures as for any Plug & Play external USB device, specifically:

Double click on the taskbar icon to “Unplug or Eject hardware”. The adjacent dialogue box will appear, displaying the Plug & Play external devices. In the current example, you can see Mvisto as a USB Mass Storage Device.

In order to remove it, click the device in the list and then click Stop.



Click OK on the next dialogue box. The operating system will automatically stop the device and inform you for its safe removal. If you are using Mvisto (e.g. you are working on a Word document or a picture located in its disk), the operating system will notify you that it is unable to remove the device. In this case, close all the applications affecting or accessing Mvisto and try again.



TV Connection

Mvisto provides high quality video and audio output when connected to your TV set and audio system.

The TV connection is straight forward. Just connect Mvisto to your TV set (NTSC or PAL) using the AV cable supplied, plug the Power Supply adaptor into the Mvisto, and then into the electrical outlet. Now make sure the switch on the back of the unit is turned on.

Audio Setup

Audio is provided to the stereo input of your TV set by the Left/Right RCA jacks.

Remote Control Keys

Mvisto's remote control has a full set of buttons in order to provide the user with complete control of the device.

	<ol style="list-style-type: none"> 1. ZOOM to image 2. ROTATE image 3. TRANSITION/EQUALIZER 4. POWER On/Off 5. PHOTO 6. MUSIC 7. MOVIE 8. FILE 9. SETUP 10. UP 11. MODE 12. VOL +, increase volume 13. LEFT 14. PLAY/ENTER 15. RIGHT 16. VOL -, decrease volume 17. INFORMATION 18. DOWN 19. SLIDE 20. AUDIO 21. PREVIOUS TRACK 22. PAUSE 23. NEXT 24. MUTE 25. REVERSE TRACK 26. STOP 27. FAST FORWARD 28. REPEAT
--	--

Mvisto Control Keys

Mvisto’s housing has a set of control keys built into the housing. These keys can be used to control your Mvisto.



1. UP
2. LEFT
3. RIGHT
4. DOWN
5. MODE
6. SETUP
7. ENTER/PLAY
8. STOP
9. REV
10. FORWARD

Keys	Movie	Music	Photo	File
MODE	Main Menu	Main Menu	Main Menu	Main Menu
SETUP	Setup Menu	Setup Menu	Setup Menu	Setup Menu
PLAY	Select / Play	Select / Play	Select / Play	Select / Play
STOP	Stop Playback	Stop Playback	Stop Display	N/A
REV	Reverse Play	Reverse Play	N/A	N/A
FWD	Fast Forward	Fast Forward	N/A	N/A
LEFT	N/A	Previous Page	Previous Page	Scroll Up
RIGHT	N/A	Next Page	Next Photo	Scroll Down
UP	N/A	Scroll Up	Scroll Up	Scroll Up
DOWN	N/A	Scroll Down	Scroll Down	Scroll Down

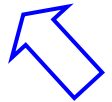
Summary of Remote Control Keys

	Movie	Music	Photo	File
ZOOM	N/A	N/A	ZOOM IN (using ⇒ key), ZOOM OUT	N/A
ROTATE	N/A	N/A	Change the Angle of Photo	N/A
TRANSITION / EQ	N/A	Display Equalizer	Change the Effect	N/A
POWER	POWER On/Off	POWER On/Off	POWER On/Off	POWER On/Off
PHOTO	Photo Library	Photo Library	Photo Library	Photo Library
MUSIC	Music Library	Music Library	Music Library	Music Library
FILE	File Library	File Library	File Library	File Library
SETUP	Setup Menu	Setup Menu	Setup Menu	Setup Menu
UP▲	N/A	Scroll Up Through List	Scroll Up Through List	Scroll Up Through List
MODE	Main Menu	Main Menu	Main Menu	Main Menu
VOL +	Increase volume	Increase volume	N/A	N/A
VOL -	Decrease Volume	Decrease volume	N/A	N/A
LEFT	N/A	Previous Page	Previous Page	Scroll Up Through List
ENTER/PLAY	Select / Play	Select / Play	Select	Select
RIGHT	N/A	Next Page	Next Photo	Down
INFO	Displays File Info (size, format, etc)	Displays Equalizer	Displays File Info (size, format, etc)	N/A
DOWN	N/A	Scroll Down Through List	Scroll Down Through Photos	Scroll Down List
SLIDE	N/A	N/A	Start Slide Show	N/A
AUDIO	Toggle Audio Languages	N/A	N/A	N/A
PREV	Previous Movie Played	Previous Song Played	Previous Page	Top of List
PAUSE/STEP	Pause / Resume	PAUSE	Pause/ Resume (Slide Show)	N/A
NEXT	Forward Next Movie	Next Page	Next Picture	N/A
MUTE	Mute	Mute	N/A	N/A
REV	N/A	N/A	N/A	N/A
STOP	Stop Playback	Stop Playback	Stop Display	N/A
FWD	Fast Forward	Fast Forward	N/A	N/A
REPEAT	N/A	N/A	Turn Repeat On /Off	N/A

Remote Control Battery Installation

Mvisto's Remote Control uses one (1) 3 Volt CR2025 type Lithium Battery. This battery may be packaged separately from the remote control. To load it into the remote, do the following:

- Remove the battery compartment cover/holder.
- Load the battery onto the battery cover/holder.
- Position the "+" side of the battery according to the "+" symbol of the battery holder.
- Slide the battery compartment cover/holder into the remote.



NOTE: Remove the battery if the remote control will not be used for an extended period of time.

Menu Functions

Main Menu

This is the menu (as shown in the adjacent figure) that appears when you turn on Mvisto.

You have four (4) main selections that you can access with the navigation buttons and by pressing PLAY/ENTER

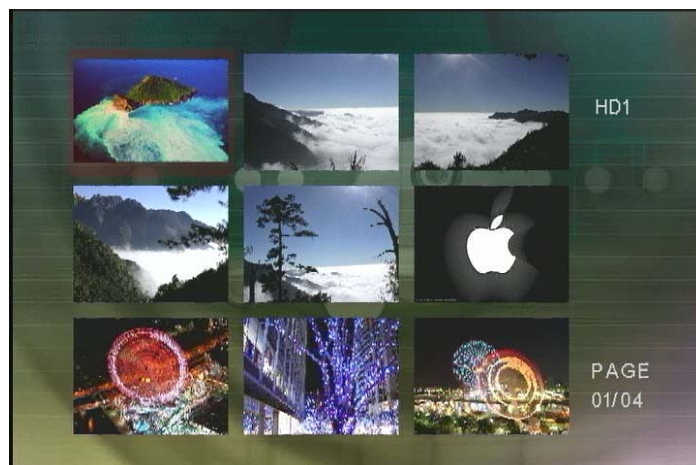
Please look at the following paragraphs for a more detailed description of these menus.



PHOTO

Selecting the Photo menu will bring the adjacent image onto your TV screen. Press the INFO button on the remote control to view the size of each image

By using the navigation buttons and the PLAY/ENTER on your remote, you can select the digital picture you want to display. For further commands, refer to page 10.



MUSIC

Selecting the Music menu will bring the adjacent image onto your TV screen. On the right side, you will see the length of each Music file. Use the INFO button during playback for further details of your present song.

By using the navigation buttons and the PLAY/ENTER on your remote or device, you can select the music file you want to play. For further commands, refer to page 10.



MOVIE

Selecting the Movies menu will bring the adjacent image onto your TV screen. Press the INFO button on the remote control to view the size of the file you have selected.

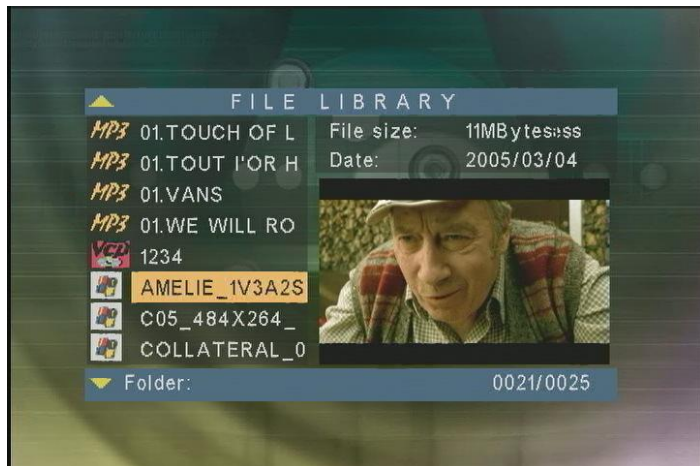
By using the navigation buttons and the PLAY/ENTER on your remote or device, you can select the movie you want to play. For further commands, refer to page 10.



FILE

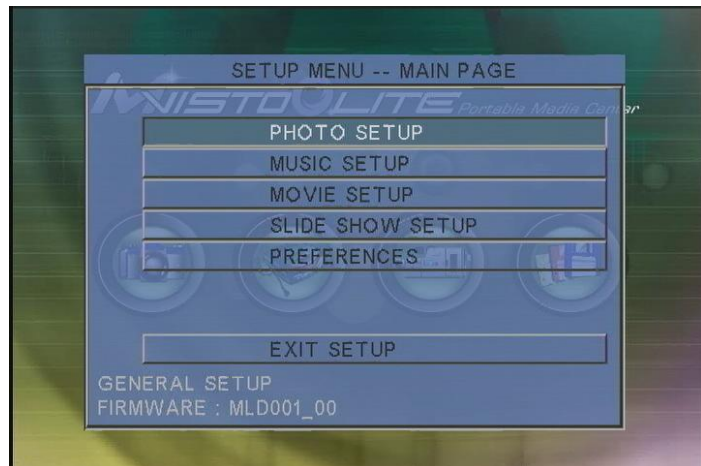
Selecting the File menu will bring the adjacent image onto your TV screen. On the left side you will see the directory list of the files organized in your device's hard disk.

By using the navigation buttons and the PLAY/ENTER on your remote, you can select the File you want to display. A THUMBNAIL of the file will also be generated for you to view in the bottom right hand corner of your screen. For further commands, refer to page 10.



Setup Menu

The Mvisto Setup Menu is extremely important in order to correctly configure your device and benefit from its advanced features. In the following paragraphs, there are detailed descriptions of the various settings and parameters.



Use the arrow navigation buttons to select your preference and press the PLAY/ENTER button on the remote control or fixed buttons on the Mvisto case to activate it. Then use the arrow buttons to navigate back to the Main Menu button and press PLAY/ENTER to save the setting. This will bring you to the Setup menu. To exit this menu please navigate to the EXIT SETUP and press the PLAY/ENTER button.

Photo Setup

Selecting Photo Setup allows you to control the speed at which your photos change.

Settings:

Transition Mode – Fast / Slow

Music Setup

This feature allows you to control how your music is played back, and if it is repeated how many times.

Settings:

Repeat Mode – One / Off / All

Movie Setup

This feature allows you to control how your movies are played back, and if they are repeated how many times.

Settings:

Repeat Mode – Single / One Loop / Continuous

Slide Show Setup

Selecting Slide Show setting lets you configure the speed and way in which your pictures are displayed on your TV screen. Please note the slide show automatically plays the music in your Music folder when the slide show starts. It automatically starts with the first song in the list and works its way down.

Slide Show Mode – Manual / Auto

Folder Repeat - On / Off

Interval Time - 1 sec / 3 sec / 5 sec / 10 sec

Transition – Blind Top -> Bottom / Left -> Right / Right -> Left / Lower Right -> Centre
Centre -> Lower Right / Implose / Blind Left -> Right / Cross Fade

Preferences

This section lets you configure your Mvisto TV output setting as well as language support, and OSD Message support.

TV Type – Multi / NTSC / PAL*

OSD Language – English / Chinese / Chinese 5(BIG5)

OSD Message – On / Off

Setup Values – Default

* You must restart your Mvisto in order to change the Default TV Type Setting otherwise the new settings will not be made.




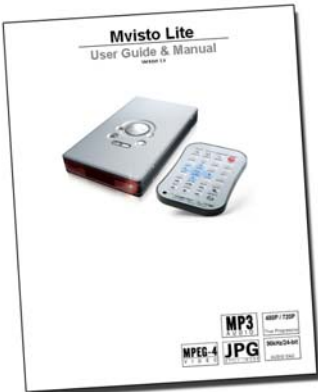
Specifications

Supported Audio Files Formats	MP3, AC3
Supported Audio Outputs Formats	Dual Stereo analog audio
Supported Video Files Formats	MPEG-1 (AVI, MPG, DAT), MPEG-2 (AVI, VOB) MPEG-4 (AVI, XviD).
Supported Video Outputs Formats	NTSC/PAL composite and S-video
Languages Supported	English, Traditional Chinese, Simplified Chinese
Supported Interfaces	USB 2.0
Output Ports	AV multi-connector: <ul style="list-style-type: none"> • Composite RCA, Left Audio RCA, Right Audio RCA, S-Video Mini DIN
	USB 2.0 Mini B
Input Ports	USB 2.0 Mini B
	IR @ 38KHz
Storage Capacity	Any standard Parallel ATA 2.5" Hard Drive (up to 9.5mm)
File Systems Supported	FAT32 (up to 4 multiple partitions)
Power Input	AC: 100-240V, 0.4A, 50-60Hz DC: 5V, 2Amps
Power Consumption	5V @ 1.3Amps (max), 5V @ 1.1Amps (typical) 5V @ 0.85Amps (stand-by)
Dimensions	13.2cm x 7.8cm x 1.8cm
Weight	196 grams (6.9 oz)
Operating Temperature/Humidity	0 C to 40 C / 10% to 90% non condensing
Storage Temperature/Humidity	10 C to 30 C / 10% to 90% non condensing

Package Contents

Standard Package

Check No.	Part	Description	Note
1		<p>The Mvisto portable media center.</p> <p><i>NO hard drive included!</i></p>	
2		<p>Power Adaptor with automatic voltage changeover 110V/220V.</p> <p>In Europe, a European Plug is included.</p>	
3		<p>Infrared Remote Control and one 3Volt CR2025 type Lithium Battery</p>	

4		<p>AV Cable (Composite RCA, S-Video mini DIN, Left Audio RCA, Right Audio RCA)</p>	
5		<p>USB 2.0 Cable (A to mini B).</p> <p><i>In order to have maximum transfer rate and reliability, use only the cable provided in this package</i></p>	
6		<p>CD with USB driver for Win98/SE</p>	
7		<p>User Guide & Manual in hard copy</p>	



Safety Information

Before starting your Mvisto, please carefully read the following information relating to the safety issues on your device in order to extend its life.

Power on/off precautions

Mvisto Remote Control provides the POWER ON/OFF button that controls the power status of your device. **It is highly recommended to switch the unit to standby mode (yellow light) when it is not in use.**

Switching Mvisto to stand-by will change the Mvisto indication LED from GREEN to YELLOW, the HDD to stand-by mode, and the entire system will consume less power. As a result, less heat is produced and much less mechanical stress is caused to the HDD. **All the above recommendations, if followed, will extend the life for your Mvisto.**

Location and placing precautions

Do not place any other objects on top of the unit. Do not place the unit on an amplifier or other equipment that can become hot.

Avoid positioning your Mvisto device in the following places:

- Locations with direct sunlight, next to radiators, other sources of heat, or in vehicles that are parked directly in the sun with the windows and doors closed.
- Locations with very high temperature (more than 35° C) or humidity (more than 90%).
- Dusty locations.
- Locations subject to vibration, shock, or with a sloping base.

Electricity and power plug

Careful attention must be paid to the following points in order to avoid operational faults with the equipment and to prevent electric shock, fire, and injury:

- When removing the power cable from the socket, always pull on the plug and never on the cable.
- Do not connect and remove the power cable with wet hands.
- Keep the power cable away from heaters.
- Never try to repair the power cable yourself or to modify it in any way.
- Clean dust, dirt, and etc. from the power plug at regular intervals.
- If the unit is dropped or becomes damaged in any other way, unplug the power cable.
- If the unit should emit smoke, unusual smell, or noise, switch it off and unplug the power cable. In such cases, please contact your dealer.
- **If the unit is not used for extended periods, then the power plug should be removed from the socket.**

Cables

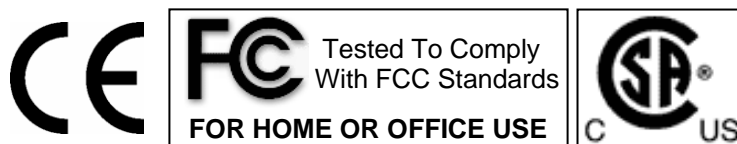
Use only the cables supplied or recommended by your vendor in order to avoid the risk of malfunction, electric shock, and possible interference of the device.



Declaration of Conformity

Mvisto has successfully passed the EN 55022 (Emissions Environment) and EN 55024 (Immunity Environment) EMI test procedures. Subsequently, this product is fully CE compliant and assigned with the CE mark.

Moreover, Mvisto is a Class B digital apparatus that meets all requirements of the Canadian Interference Causing Equipment Regulations.

This device complies with part 15 of the FCC rules. Operation is subject to the following conditions: (1) This device may not cause harmful interference, and (2) This device must accept any interference received including any interference that may cause undesired operation



	<p>The socket – outlet shall be installed near the equipment and shall be easily accessible. In case of emergency, it is necessary to be able to disconnect the device immediately from the electrical network by disconnecting the device power cable either from the outlet or from the device inlet.</p>
	<p>Other devices connected to Mvisto should be compliant with safety regulations and should be SELV (safety extra low voltages) devices or circuits in order for Mvisto to fulfill the safety requirements.</p>

© Copyright 2004 by Macpower&Tytech Technology Co., Ltd. All Rights Reserved

The information contained in this manual is believed to be accurate and reliable. Macpower&Tytech Technology assumes no responsibility for any errors contained in this manual. Macpower&Tytech Technology reserves the right to make changes in the specifications and/or design of the above mentioned product without prior notice. The diagrams contained in this manual may also not fully represent the product that you are using and are there for illustration purposes only. Macpower&Tytech Technology assumes no responsibility for any differences between the product mentioned in this manual and the product you may have.

