

PLEIADES for SATA



User Manual
April 16, 2010 - v1.0



For more information, visit our website at www.inxtron.com.

(1) Specifications

Application	<ul style="list-style-type: none"> • 3.5-inch SATA-I or SATA-II hard drive • 1.5Gb/s or 3.0Gb/s • 80GB - 2TB
Interface/Ports	<ul style="list-style-type: none"> • eSATA • FireWire 800 • FireWire 400 • USB 2.0 High Speed
Data Transfer	<ul style="list-style-type: none"> • eSATA up to 3.0Gbps (300MB/s) • FireWire 800 up to 800Mbps (100MB/s) • FireWire 400 up to 400Mbps (50MB/s) • USB 2.0 up to 480Mbps (60MB/s)
System Requirements	<ul style="list-style-type: none"> • PC: Windows XP/Vista/7 • Mac: Mac OS 10.2 or above • eSATA connection: Plug and Play support required for eSATA host card driver
Operating Environment	<ul style="list-style-type: none"> • Temperature: 5°C ~ 40°C • Humidity: 10%RH ~ 80%RH
Storage Environment	<ul style="list-style-type: none"> • Temperature: -20°C ~ 70°C • Humidity: 5%RH ~ 90%RH
Power Supply	<ul style="list-style-type: none"> • Input: AC 100-240V • Single-output: DC +12V/1.5A • Dual-output: DC +12V/2A, +5V/2A
Enclosure Size	<ul style="list-style-type: none"> • 22.8cm x 13.7cm x 3.5cm

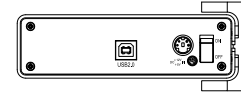
Note: Interfaces, data transfer and power supply depend on the model.

(2) Detailed View

LED indicator behind front panel

OFF = Power OFF
Solid Blue = Power ON, status ready
Flashing Blue = Power ON, read/write access

PD-SATA USB 2.0



PD-SATA S2



PD-SATA Super-S Combo



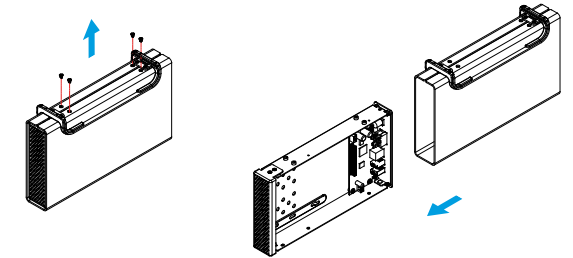
PD-SATA Super-S Combo



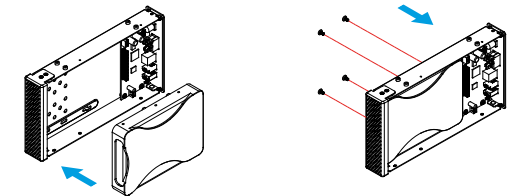
Note: The available interfaces and the power supply depend on the model you have purchased.

(3) Hard Drive Assembly

a) Remove the four screws located at the bottom of the case and pull out the drive chassis from the enclosure.



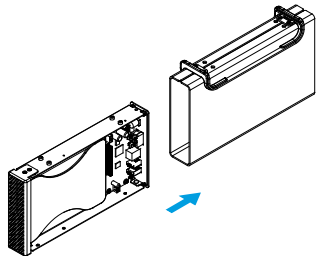
b) Install the hard drive, connect the SATA and power cable and then mount the drive with the four screws from the bottom.



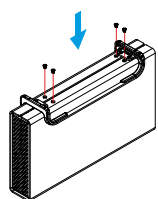
Note: Your unit may come with a pre-installed hard drive. Before opening your enclosure, please read the warranty carefully, as this could void it.

(4) Enclosure Assembly

a) Slide the assembled drive back into the enclosure but be careful not to damage any of the components.



b) Fasten the four screws at the bottom of the casing to finish the assembly.



Note: Be careful not to damage any components when installing the drive!

(5) System Set Up

If the drive has been pre-installed and setup already, you do not need to prepare anything else and can use it straight out of the box.

If you have installed the drive yourself and it has never been used before, create a partition and format the drive, so that it can be recognized by the computer.

- Turn on your computer and start the system.
- Plug-in the external power supply, connect the drive to the computer and turn on the power.
- The system will automatically mount the drive. PC users can access it under My Computer and Mac users can access it on the desktop.
- If the drive does not show up, double-check that the power has been turned on and the device is connected to the computer.
Then, for PC users, use the Disk Management tool or for Mac users the Disk Utility to prepare and format the drive. Be aware that formatting the drive will erase all existing data!
- For the safe removal of your drive and to assure that no data is lost, always eject the external drive from your system first, before you turn it off.

Note: When not in use for longer periods of time, we recommend to turn off the device and unplug the power supply.

(6) Safety Information

Six-pin FireWire cable

When using a six-pin FireWire cable, make sure NOT to insert the connector the wrong way (upside down), or you will damage the device!

Location and placing precautions

Do not cover the device and do not place the unit on other heat-sensitive equipment. Avoid positioning it in the following places:

- Locations with direct sunlight, next to radiators or other sources of heat with high temperatures (more than 35°C) or high humidity (more than 90%).
- Locations subject to vibration, shock, or with a slope.
- Do not expose the product to water or humid conditions.

Electricity and power plug

Careful attention must be paid to the following points in order to avoid operational faults and electric shock or fire:

- When removing the power cable from the socket, always pull on the plug fixture and never on the cord.
- Do not touch the power cable with wet hands.
- Never try to repair or modify the power cable yourself.
- If the unit should emit smoke, an unusual odour or noise, switch it off immediately and unplug the power cable.

Cables

Use only the cables supplied or recommended by your vendor in order to avoid any sort of malfunction.

(7) FAQ

Q: What file system should I use to format the drive?

A: This will depend on how you want to use the drive but in general, we recommend:

- Windows XP/Vista/7 --> NTFS
- Mac OS X --> HFS+ (Mac OS Extended)
- To use it on both PC and Mac --> FAT32

Q: Can I use my device with bus power only?

A: No, an external power supply is always required.

Q: Can I use more than one interface at the same time?

A: No, only one interface can be used at any given time. Disconnect the previous cable before connecting the new one.

© 2010 by inXtron Inc. All Rights Reserved

The information contained in this document is believed to be accurate and reliable. inXtron assumes no responsibility for any errors or differences between the product you may have and the one mentioned in this document and reserves the right to make changes in the specifications and/or design of this product without prior notice. The diagrams contained in this document are for reference and may not fully represent the real product.