

Pleiades USB/LAN

*External Storage Enclosure for
3.5" Hard Drive*



User Manual & Installation Guide

v1.1

Table of Contents

CHAPTER 1 - INTRODUCTION - 1 -

ICON KEY - 1 -

THE PLEIADES USB/LAN - 1 -

PACKAGE CONTENTS - 1 -

SYSTEM REQUIREMENTS - 2 -

PC REQUIREMENTS - 2 -

MAC REQUIREMENTS - 2 -

INTERFACE INFORMATION - 2 -

CHAPTER - 2 INSTALLING THE HDD - 3 -

PREPARING THE ENCLOSURE - 3 -

HARD DRIVE ASSEMBLY - 4 -

CHAPTER 3 - SYSTEM SET UP - 5 -

INSTALLATION ON A PC USING USB 2.0 - 6 -

WIN2000/WINXP WITH USB - 6 -

WIN98/SE WITH USB - 6 -

UNPLUG PROCEDURE - 6 -

INSTALLATION ON A MAC USING USB 2.0 - 7 -

MAC OS 9.X/10.X WITH USB - 7 -

MAC OS 10.2 OR ABOVE WITH USB 2.0 - 7 -

UNPLUG PROCEDURE - 7 -

PARTITIONING & FORMATTING - 8 -

PC RUNNING WIN98/SE OR WINME - 8 -

PC RUNNING WIN2000 OR WINXP - 9 -

MAC OS - 10 -

CHAPTER 4 – LAN DISK SETUP - 11 -

NETWORK INSTALLATION ON A PC - 11 -

NETWORK INSTALLATION ON A MAC - 11 -

CONFIGURING THE LAN DISK - 11 -

LOGIN ON A PC - 11 -

LOGIN ON A MAC - 11 -

SYSTEM INFORMATION - 12 -

MAINTENANCE - 12 -

SMB SERVER - 13 -

FILE ACCESS ON A PC - 13 -

FILE ACCESS ON A MAC - 14 -

FTP CONFIGURATION - 14 -

DISK UTILITY - 15 -

FAQ - 15 -

ABOUT THIS MANUAL - 16 -

Chapter 1 - Introduction

Icon Key

Throughout this manual you will see icons on the left margin that denote either Notes or Special Remarks as outlined below:



General Notes and Tips



Remarks for PC users and Microsoft Windows OS



Remarks for Mac users and Apple Macintosh OS

The Pleiades USB/LAN

The External Storage Enclosure “Pleiades USB/LAN” is made of high quality aluminium, excellent for heat-dissipation. Available with various types of interfaces, this is the perfect solution for additional external storage, data backup as well as for transferring data between computers and platforms.

Product Dimensions: 23.0cm x 14.0 cm x 5.0 cm
 9.05” x 5.50” x 1.95”

Package Contents

- Pleiades USB/LAN
- External Power Adapter;
 Input 100-240V, Output 12V/2A, 5V/2A
- Power Cord
- Interface Cable
- Aluminium Stand
- Driver CD (USB driver required for Win98/SE only)



Package Content
may vary,
depending on
vendor & version.

System Requirements

PC Requirements

- Minimum Intel Processor II 350MHz, 64MB RAM
- USB 1.1 equipped PC; WinME, Win2000, WinXP
- USB 2.0 equipped PC; WinME, Win2000, WinXP
- 10 Mbps, 100 Mbps or 10/100Mbps Fast Ethernet card, or a USB-to-Ethernet converter equipped PC; Win2000, WinXP

Mac Requirements

- Minimum Apple G3 processor, 64MB RAM
- USB 1.1 equipped Mac; Mac OS 9.1, 9.2, 10.1.5, 10.2, 10.3
- USB 2.0 equipped Mac; Mac OS 10.2, 10.3 or more
- 10 Mbps, 100Mbps or 10/100Mbps Fast Ethernet card, or a USB-to-Ethernet converter equipped Mac OS 9.2, 10.2 or more.

Interface Information



If you forgot the login, press and hold the reset button, turn on the device and wait for ten seconds before releasing it. This will reset the device to its factory default settings.



1. Status Lights
Amber = HDD Access (HDD)
Yellow = System Status (SYSTEM)
Green = Network Status (LINK)
2. 10/100 Auto sensing port (RJ-45)
3. Reset Button
4. USB 2.0 Interface
5. Power Receptacle
6. Power Switch

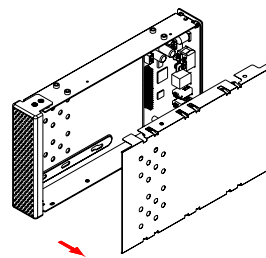
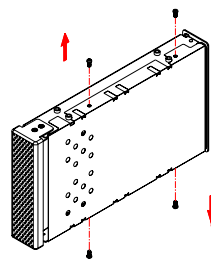
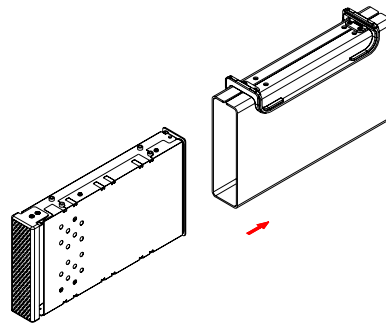
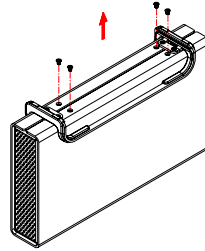
Chapter - 2 Installing the HDD

Preparing the Enclosure

Remove the 4 screws on the bottom, slide the case off the body, remove the screws for the top cover and open up the case.



Your unit might come with an installed hard drive. Before opening such an enclosure, please read the warranty and any other notes from your vendor carefully before doing so, as this might void your warranty.





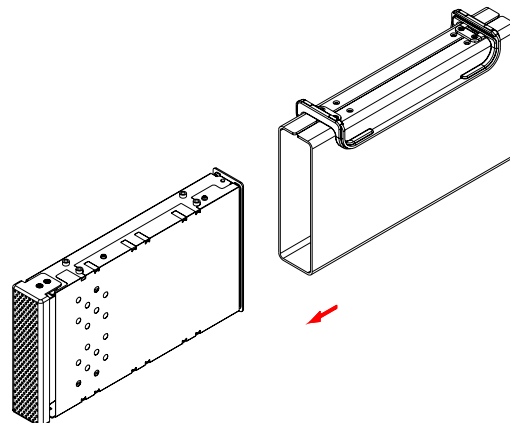
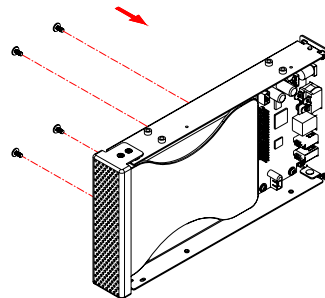
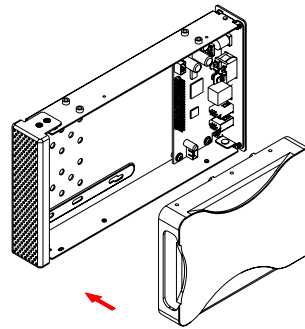
The hard drive jumper settings should be master or factory default.



Be careful not to damage any cables or components and double check the connection between the cables, the bridge board and your hard drive before you close up the case.

Hard Drive Assembly

Connect the ATA cable and the power line to your hard drive. Install the hard drive and fasten the screws. Align the top cover with the body and fasten the screws, before you slide it back into the casing. Fasten the 4 screws on the bottom and connect your power adapter and interface cable.





Make sure your computer is connected to the same network as your LAN disk.



Do not connect the USB and Ethernet cables at the same time!



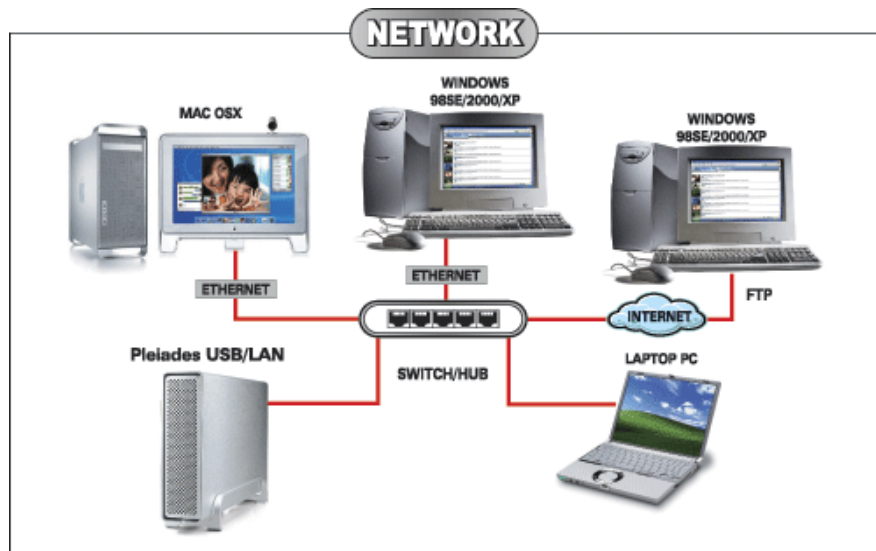
To assure optimum performance on the network, only use network switches and routers.



If you buy a spare power adapter, make sure the specifications are identical with the power adapter supplied!

Chapter 3 - System Set Up

In LAN mode, the Pleiades is attached to an Ethernet switch or router. Each user on the network can use the LAN disk and access it using FTP or SMB.



In USB 2.0 High Speed mode, the Pleiades is directly attached to a single computer via the USB port.



A few tips on how to connect your external storage enclosure:

- Do not cover the Enclosure and leave enough room around it for the drive to cool down
- Do not expose the product to water or humid conditions
- Always check for visible damage and defects of power and interface cables before use
- We recommend using the cables and adapter supplied with your product



If the system doesn't recognize the drive, turn on the power first, before connecting the USB cable.



For safe removal of your drive and to assure that no data is lost, always follow the unplug procedure. If not, an error message will show up.

Installation on a PC using USB 2.0

Win2000 or WinXP with a USB connection:

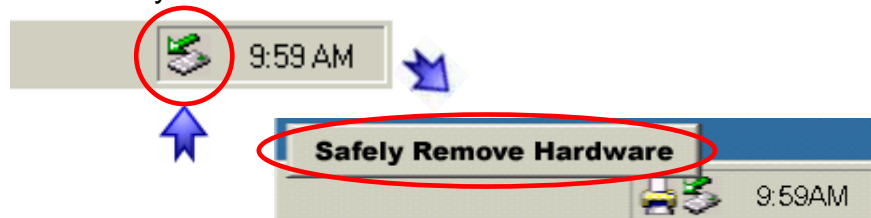
- Turn on your Computer and start Windows
- Connect the Pleiades and turn it on
- Let Windows search and install the driver automatically
- Open "My Computer" to see your external hard drive **

Win98/SE with a USB connection:

- Turn on your Computer and start Windows
- Insert the driver CD into your CD-ROM
- Connect the Pleiades and turn it on
- Follow the onscreen instructions and install the drivers
- Open "My Computer" to see your external hard drive **

Unplug Procedure:

- Click on the taskbar icon for external hardware
- Choose your external hard drive and confirm to remove it



** For factory new drives and formatting, see "Partitioning & Formatting"



If the system doesn't recognize the drive, turn on the power first, before connecting the USB cable.



For Mac OS 8.6, the USB extension has to be at least v1.41.



For safe removal of your drive and to assure that no data is lost, always follow the unplug procedure. If not, an error message will show up.

Installation on a Mac using USB 2.0

Mac OS 9.x or Mac OS 10.x with a USB connection:

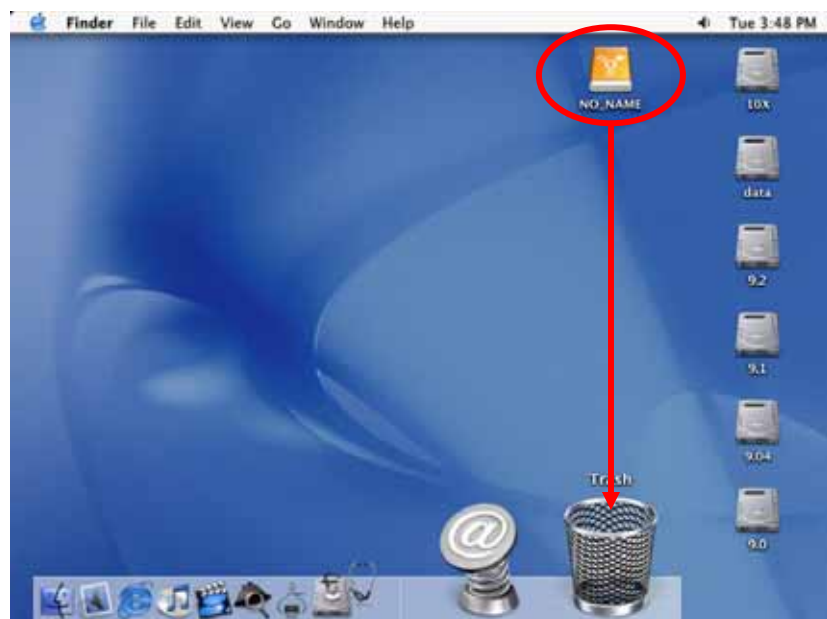
- Turn on your computer and start Mac OS
- Connect the Pleiades and turn it on
- No driver installation required
- The external drive will mount and show up on your desktop**

Mac OS 10.2 or above with a USB 2.0 connection:

- Turn on your computer and start Mac OS
- Connect the Pleiades and turn it on
- No driver installation required
- The external drive will mount and show up on your desktop**

Unplug Procedure:

- Drag the external hard drive icon into the trash bin
- Turn off your device



** For factory new drives and formatting, see "Partitioning & Formatting"



You can choose to create several partitions through USB but be aware that only the first partition will be recognised on the network (LAN disk function).



The drive has to be formatted using the FAT32 file system.



Instead, you may also use the disk utility of the LAN disk to format the drive. Connect the device to your LAN, login, go to disk utility and choose "Format".

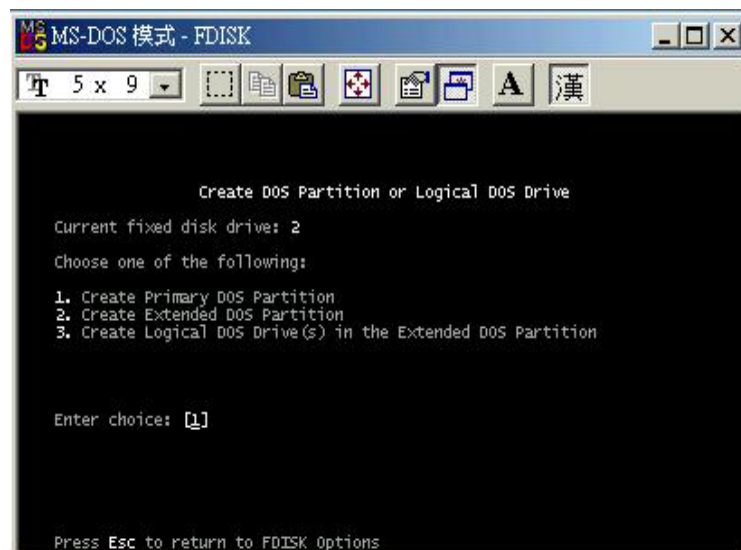
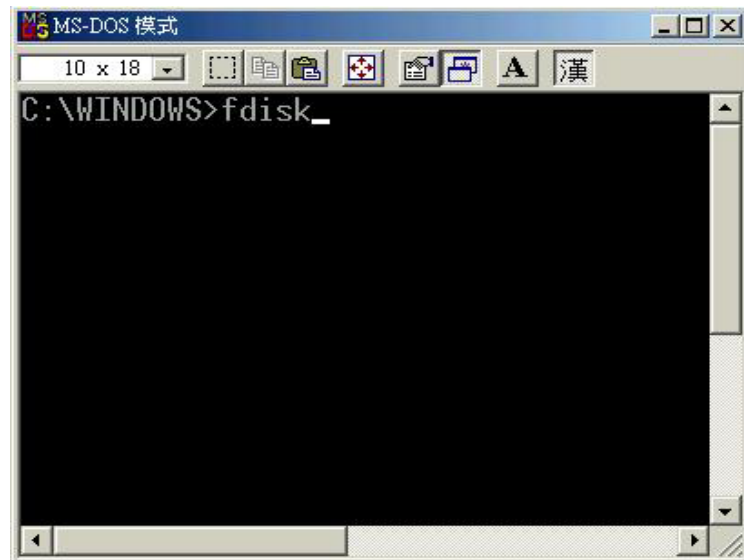
Partitioning & Formatting

Be aware that this will destroy all your existing data on the drive, so make sure you have a backup! This step is usually only required the first time you install a factory new hard drive, if you change the format or want to erase all data on your drive.

PC running Win98/SE or WinME:

MS-DOS command "fdisk" (press Enter to confirm)

- Type "fdisk" and press Enter
- Select "Y" and press Enter
- Enter "5" to change the drive
- Select the drive you want to format
- Choose "1" and follow the onscreen instructions





The drive has to be formatted using the FAT32 file system. If NTFS is used, the drive will only be recognised on USB.



If you use Win2000 or WinXP and FAT32, the biggest single partition you can create will be 32GB. To create larger partitions, you need to use the DOS command under Win98SE or WinME or use 3rd party software.

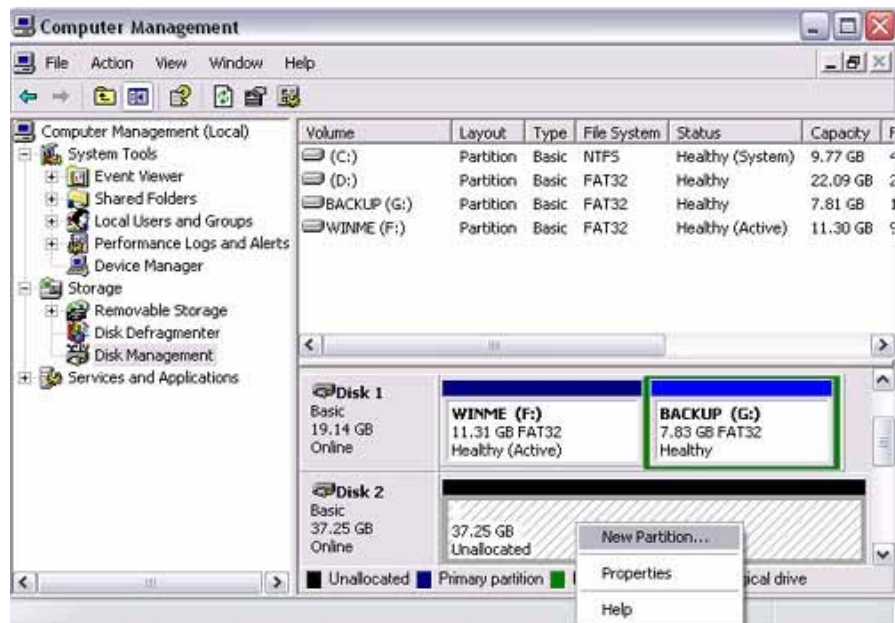


You can choose to create several partitions through USB but be aware that only the first partition will be recognised on the network (LAN disk function).

PC running Win2000 or WinXP:

Disk Management Program

- Right click on “My Computer” and choose “Manage”
- Select “Disk Management”
- Choose the drive you want to format and right click on it for further commands (Choose New Partition)
- Follow the Partition Wizard and create a FAT32 partition



Alternatively, you can also format the LAN disk using the disk utility option. Connect the device to your LAN, login, go to disk utility and choose “Format”.



The drive has to be formatted using the FAT32 file system (MS-DOS).

If Mac OS extended is used, the drive will only be recognised on USB.



If you can not see the drive, make sure the jumper settings of your hard drive are correct, there are no extension conflicts and the power is turned on!



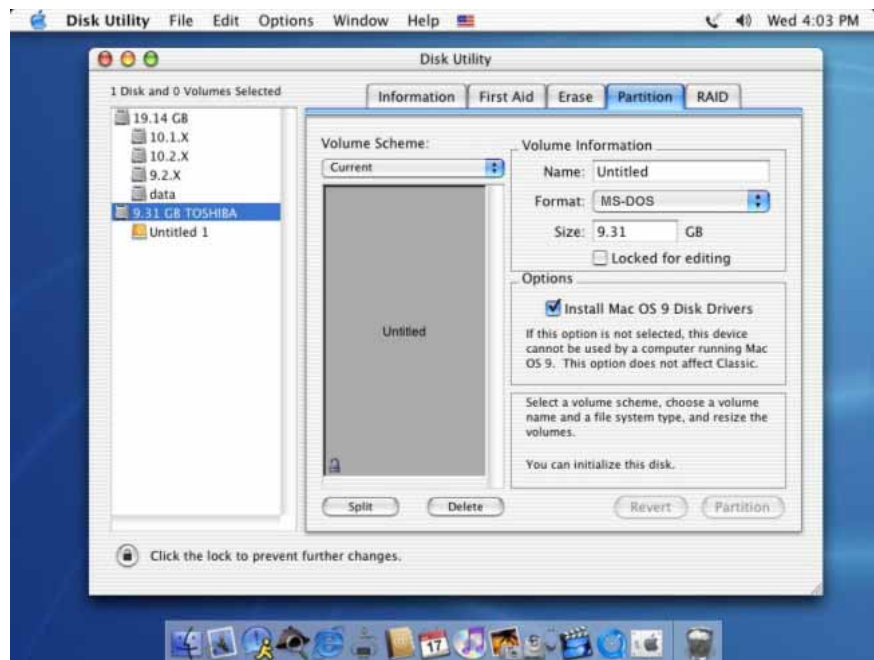
You can choose to create several partitions through USB but be aware that the only the first partition is recognised on the network (LAN disk function).

Mac OS:

Mac OS9.2 and earlier, does not support creating partitions on an external drive. To do that, you would need to purchase additional 3rd party software, connect the drive to the internal IDE bus or upgrade to OS X.

For Mac OS X, use the Disk Utility to format and create partitions on your external disk.

- Select “Disk Utility” in the utilities folder
- Choose your external drive and create a FAT32 partition (also called MS-DOS on the Mac)



Alternatively, you can also format the LAN disk using the disk utility option. Connect the device to your LAN, login, go to disk utility and choose “Format”.

Chapter 4 – LAN Disk Setup



To connect the LAN disk to your network, an additional switch, router or hub may be required.



If you connect the LAN disk to your computer directly, make sure to obtain the IP address and DNS settings automatically, otherwise you may not be able to find the device.



To find out the IP address of the LAN disk on your local network, use the SCAN utility included on your CD.

Network Installation on a PC

- Turn on your Computer and start Windows
- If you have the USB disk connected, disconnect it
- Connect the Pleiades to the local network and turn it on
- Confirm that your Local Area Network settings are correct and that your computer is connected to the network

Network Installation on a Mac

- Turn on your Computer and start Mac OS
- If you have the USB disk connected, disconnect it
- Connect the Pleiades to the local network and turn it on
- Confirm that your Local Area Network settings are correct and that your computer is connected to the network

Configuring the LAN disk

Login on a PC

Open your browser and type STORAGE or if connected directly to your computer type 169.254.0.1. If you have more than one device connected at the same time, type STORAGE-xxxx, whereas the xxxx stands for the last four digits of your Mac address as seen on the bottom of your device (example STORAGE-2343).

Login on a Mac

Open your Terminal and type “nmblookup STORAGE”, copy the corresponding IP address and paste it into your browser or if the LAN disk is connected directly to your computer, type 169.254.0.1 into your browser. If you have more than one device connected at the same time, type “nmblookup STORAGE-xxxx, whereas the xxxx stands for the last four digits of your Mac address as seen on the bottom of your device (example STORAGE-2343).



If you forgot your personal login, press and hold the reset button, turn on the device and wait for ten seconds before releasing it. This will reset the device to its factory default setting.



By default, the system is using English. If you want to store or transfer files with a different encoding (different language), please choose the corresponding language from the drop down list.

If the encoding doesn't match the language of your files, the transfer can not be completed.

A pop-up dialog box will appear prompting you for your username and password.

Default Settings

Username: admin

Password: admin

We strongly suggest you to change this, as soon as you are logged in, to prevent unauthorized access.

After login, you are able to configure and customize all your settings from that screen. By default, the system is setup, so that it can be used without further modification.

System Information

The screenshot shows the web interface for the LAN pleiades USB-LAN DISK 3.5" HDD. The interface is divided into several sections:

- System Information:**

Host Name	STORAGE-0001	Change
Group Name	WORKGROUP	Change
Administrator	admin	Change
Date/Time	2005/06/21 17:55:39 GMT8	Change
Encoding	English	Submit
Firmware Version	NAS-BASIC25	
- Network Information:**

IP Address	10.128.129.127	
DHCP Server	OFF	<input type="radio"/> ENABLE <input checked="" type="radio"/> DISABLE Apply
- Disk Information:**

Disk ID	[master] IC35L180AVV207-1 V260A66A
Free Size	172918 MB free
Total Size	176699 MB

If required, you may change any of the settings such as hostname, group name, login, time, encoding and IP configuration.

Maintenance

The tools found under maintenance can be used to upgrade the firmware of your LAN disk and to reset the device to its factory default settings. Read the description displayed for each tool for more details.



The public folder is created by default. You may access it immediately after the system is ready, without any further setup or login.



Make sure you are connected to the same network as your LAN disk.

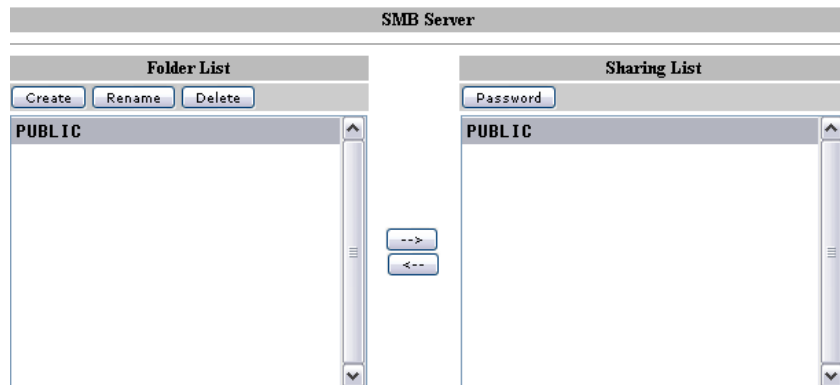


If you can not access the drive using STORAGE, use the IP address and make sure your firewall is setup to allow the access.



If you have assigned a password for your shared folder, please input the correct username and password to access your files.

SMB Server



When creating or sharing folder(s) we suggest using the English alphabet for file names. For other languages, please remember to change the language under “Status” to match your encoding. To add more folders, click on “Create”, then move the folder to your sharing list and set a password if needed. The maximum number of SMB folders that can be created on the LAN disk is 16.

Now that you have set up the files you wish to share on your LAN disk, you can access them from other computers on your LAN.

File Access on a PC

Use the Windows Explorer and type \\STORAGE or map it as a network drive. To map a network drive, click on Tools, choose “Map Network Drive...” and follow the wizard. Your folder path will look something like [\\storage\public](#) as an example.

Windows 2000/XP users can use the built-in backup utility for backing up and restoring files to the LAN disk.

1. Click the Windows Start button, choose Run, then type “ntbackup” in the input box and click <Enter>
2. Use the wizard and follow the instructions
3. When prompted for a target place to backup, click on the <Browse> button and select the Mapped Drive



Make sure you are connected to the same network as your LAN disk.



If you have assigned a password for your shared folder, please input the correct username and password to access your files.



If the anonymous FTP folder is set to a shared folder with password access, the access will be overwritten and the folder can be viewed without further login.



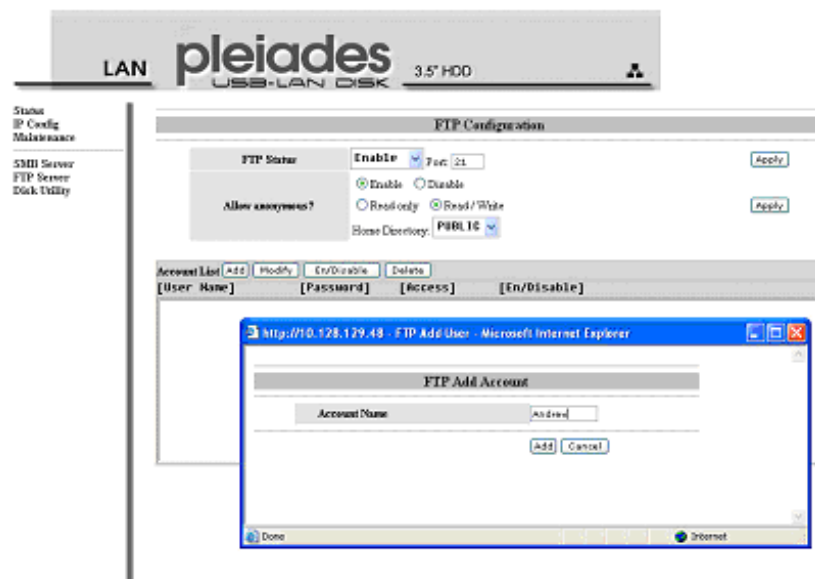
For FTP access to your LAN disk from your client, please use dedicated FTP software.

File Access on a Mac

Click on “Go” and choose “Network”. Browse for your LAN disk “STORAGE-xxxx”, which by default can be found in the WORKGROUP folder.

Alternatively, select “Go” and choose “Connect to Server”. Type smb://STORAGE or the more detailed smb://STORAGE-xxxx, whereas the xxxx stands for the last four digits of the LAN disk Mac address. When you connect to it, you will be asked to choose a folder and after entering the login, you can then access the LAN disk.

FTP Configuration



When creating or sharing folder(s) we suggest using the English alphabet for the file names. For other languages, please remember to change the language under “Status” to match your encoding.

To add new folders, click on “Add”, name your new folder and confirm it by clicking on “Add”. After the new folder has been created, highlight it and click on “Modify” to setup the access rights and sharing list according to your requirements.

Remember to click on “Modify” again to confirm and save your new settings.



If you don't use the disk utility to format the drive, make sure that you choose the FAT32 file system, otherwise it won't be recognised on the network.



Formatting the disk will erase all your data on the hard drive. Make sure to backup you files BEFORE you click on "Format"!



Please read your warranty carefully, as this may vary between different vendors!



If you experience network connection problems, use the IP address instead of the STORAGE name.

Disk Utility

Disk Utility	
Format Disk	<input type="button" value="Format"/>
Sleep Time 15	<input type="button" value="Set (min)"/>
Scan Disk	<input type="button" value="Start"/>

You may use the disk utility to format your drive, scan for disk errors and set the idle time before the device switches to standby mode.

When you format the drive using the disk utility, it will create a single partition using the FAT32 file system. If you create other partitions when connected through USB or choose a different file system, keep in mind that the LAN disk is only able to recognize the first partition and it has to be FAT32.

FAQ

For RMA and other questions, please contact your vendor or check out their online support area!

Q: I forgot my login, what do I do?

A: If you forgot your personal login for the LAN disk, press and hold the reset button, turn on the device and wait for ten seconds before releasing it. This will reset the device to its factory default settings.

Q: SMB access doesn't work on Mac OS 10.4.

A: With earlier versions of Mac OS 10.4, the LAN disk can not be accessed through SMB. Please upgrade to Mac OS 10.4.3 or later to resolve this problem.

Q: FTP access on my Mac doesn't work.

A: The FTP utility on the Mac will be able to read the data on the LAN disk but you can not write new data to the drive. To do that, you will need to install a dedicated FTP application, which can either be a free utility or professional shareware program.



For troubleshooting and to upgrade the firmware, connect the LAN disk directly to your computer using the standard Ethernet cable.



LAN disk settings do not apply when the disk is mounted via USB connection.



If you can not find your city on the time zone list, please set the time manually by changing the numbers for "Time", then saving the new setting.

Q: My HDD is not recognised.

A: Please make sure to set the jumper of your hard drive to Master when you install the drive and then use the disk utility of the web admin interface to format the drive.

Q: I get Error Code -36

A: The Finder cannot complete the operation because some data in "smb://storage" could not be read or written.

If you get the above error message, use the IP address instead of STORAGE. See following steps:

- 1) Log in via your web browser.
- 2) Under SMB Server, make sure the folder you want to access is in the Shared List - for example, the PUBLIC folder without a password.
- 3) Go to IP Config, make sure it is set to Automatic IP and write down the IP address you see there.
- 4) Go to your Finder and select Go/Connect to Server
- 5) Type smb://IP/PUBLIC and hit Connect. For the IP use the IP address you wrote down in step 3, for PUBLIC use the name of the folder you added to the Sharing List in step 2.
- 6) If the LAN disk is connected directly to your computer using the Ethernet cable, the default IP address is 169.254.0.1.

About this Manual

The firmware this manual is based on might be different from your device. Images and descriptions might therefore slightly vary between this manual and the actual product you have.

© Copyright 2006 by Macpower & Tytech Technology Co., Ltd. all Rights Reserved

The information contained in this manual is believed to be accurate and reliable. Macpower & Tytech Technology assumes no responsibility for any errors contained in this manual. Macpower & Tytech Technology reserves the right to make changes in the specifications and/or design of this product without prior notice. The diagrams contained in this manual may also not fully represent the product that you are using and are there for illustration purposes only. Macpower & Tytech Technology assumes no responsibility for any differences between the product mentioned in this manual and the product you may have.