



**User Manual**  
January 28, 2010 - v1.0



For more information, visit our website at [www.inxtron.com](http://www.inxtron.com)

### (1) Specifications

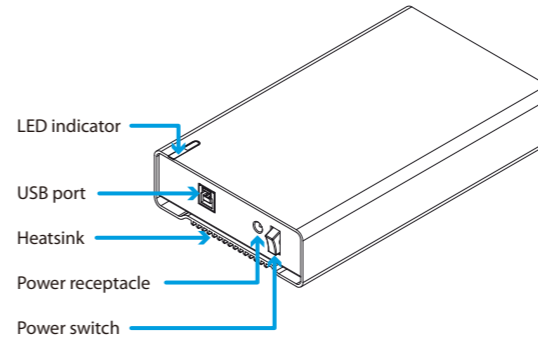
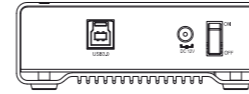
Application	<ul style="list-style-type: none"> <li>• 3.5" SATA-I or SATA-II hard drive</li> <li>• 1.5Gb/s or 3.0Gb/s</li> <li>• 80GB - 2TB</li> </ul>
Interface/Ports	<ul style="list-style-type: none"> <li>• USB 3.0 Super Speed (backwards compatible with USB 2.0)</li> </ul>
Data Transfer Rate	<ul style="list-style-type: none"> <li>• USB 3.0 up to 5Gbps (625MB/s) *</li> <li>• USB 2.0 up to 480Mbps (60MB/s)</li> <li>• USB 1.1 up to 12Mbps (1.5MB/s)</li> </ul>
System Requirements	<ul style="list-style-type: none"> <li>• PC: Windows XP/Vista/7</li> <li>• Mac: Mac OS 10.2 or above *</li> <li>• Your hardware device must have the correct corresponding port (e.g. USB 3.0, USB 2.0 or PCI card).</li> </ul>
Operating Environment	<ul style="list-style-type: none"> <li>• Temperature: 5°C ~ 40°C</li> <li>• Humidity: 10%RH ~ 80%RH</li> </ul>
Storage Environment	<ul style="list-style-type: none"> <li>• Temperature: -20°C ~ 70°C</li> <li>• Humidity: 5%RH ~ 90%RH</li> </ul>
Power Supply	<ul style="list-style-type: none"> <li>• Input: AC 100-240V</li> <li>• Output: DC +12V/2A</li> </ul>
Enclosure Size	<ul style="list-style-type: none"> <li>• 19.3cm x 11.4cm x 3.9cm</li> </ul>

\* USB 3.0 was not available for Mac OS at the time this manual was written.

### (2) Detailed View

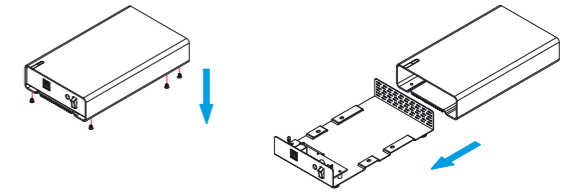
LED indicator:  
OFF = Power OFF  
Solid Blue = Power ON, status ready  
Flashing Blue = Power ON, read/write access

SK-3500 U3

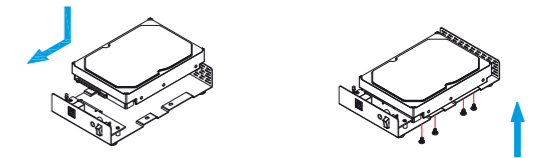


### (3) Hard Drive Assembly

a) Remove the four screws located at the bottom of the case and pull out the HDD chassis from the enclosure.



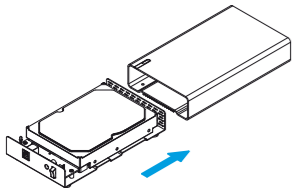
b) Install the hard drive and make sure it is connected properly. Mount the drive with the four screws from the bottom.



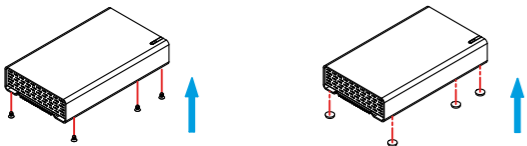
Note: Your unit may come with a pre-installed hard drive. Before opening your enclosure, please read the warranty carefully, as this could void it.

### (4) Enclosure Assembly

a) Carefully slide the assembled drive back into the enclosure and do so as not to damage any of the components.



b) Fasten the four screws at the bottom of the casing to finish the assembly. Next, peel off the paper from the back of the self-adhesive rubber feet. Now, place the rubber feet over the screws and stick them on the casing to cover the screws.



Note: Be careful not to damage any components when installing the HDD!

### (5) System Set Up

If the drive has been pre-installed and setup already, you can use the device straight out of the box.

If you have installed the drive yourself and this is a brand new HDD, you will have to create a partition first and format the drive before it is recognized by the computer.

- Turn on your computer and start the system.
- Connect one end of the USB cable to the SK-3500 USB port and the other end to the USB port on the computer.
- Plug-in the external power supply and turn the power switch to the ON position.
- The system will automatically mount the drive and you can access it under My Computer.
- If the drive does not show up, check to make sure the device has sufficient power and then use the Disk Management tool for PC users or the Disk Utility for Mac users to prepare and format the drive. Be aware that formatting the drive will erase all existing data!
- For the safe removal of your drive, and to assure that no data is lost, always eject the external drive from your system, before turning it off.

Note: When not in use for longer periods of time, it is recommended to turn off the device and unplug the power supply.

### (6) Safety Information

#### Location and placing precautions

Do not cover the SK-3500 and do not place the unit on other heat-sensitive equipment. Avoid positioning it in the following places:

- Locations with direct sunlight, next to radiators or other sources of heat with high temperatures (more than 35° C) or high humidity (more than 90%).
- Locations subject to vibration, shock, or with a slope.
- Locations where there are wet and/or humid conditions.

#### Electricity and power plug

Careful attention must be paid to the following points in order to avoid operational faults that can result in electric shock or fire:

- Always connect the power adapter to your device before you plug it into the wall socket.
- When removing the power cable from the socket, always pull on the plug fixture and never on the cord.
- Do not touch the power cable with wet hands.
- Never try to repair or modify the power cable yourself.
- If the unit should emit smoke, give off an unusual odor, or make an unusual noise, switch it off immediately and unplug the power cable.

#### Cables

Use only the cables supplied or recommended by your vendor in order to avoid any sort of malfunction.

### (7) FAQ

#### Q: What file system should I use to format the drive?

A: This will depend on how you want to use the drive but in general, we recommend:

- Windows XP/Vista/7 --> NTFS
- Mac OS X --> HFS+ (Mac OS Extended)
- To use it on both PC and Mac --> FAT32

#### Q: Can I use my device with bus power only?

A: No, an external power supply is always required.

#### Q: Does this device have a stand-by function?

A: The device itself does not have a specific stand-by or sleep function but if the Operating System of the computer goes into stand-by and the computer as well as the hard drive supports it, the drive in the external enclosure will also spin down.

© 2010 by inXtron, Inc. All Rights Reserved

The information contained in this document is believed to be accurate and reliable. inXtron assumes no responsibility for any errors or differences between the product you may have and the one mentioned in this document and reserves the right to make changes in the specifications and/or design of this product without prior notice. The diagrams contained in this document are for reference and may not fully represent the real product.