



### Quick Installation Guide February 10, 2009 - v1.1

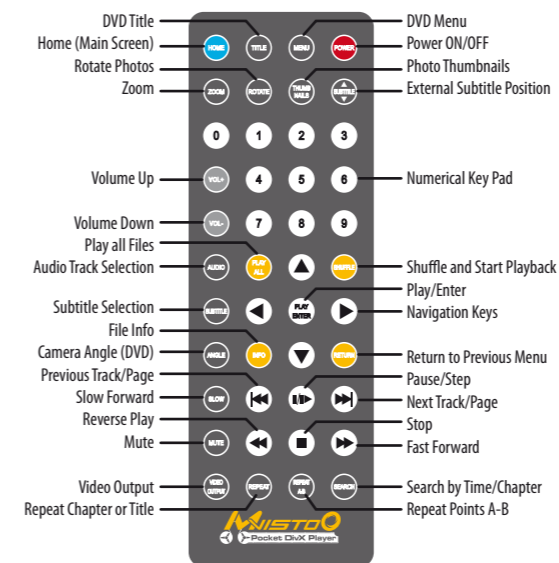
The detailed user manual is available at [www.macpower.com.tw](http://www.macpower.com.tw)

## (1) Specifications

|                     |   |
|---------------------|---|
| Audio Formats       | WMA, WAV, MP3, AAC, AC3, OGG Vorbis   |
| Audio Outputs       | <ul style="list-style-type: none"> <li>Dual Stereo analog audio</li> <li>SPDIF digital audio (supports compressed Dolby Digital 5.1 and DTS pass through)</li> </ul>  |
| Video Formats       | MPEG-1, MPEG-2 (AVI, VOB, ISO), MPEG-4 (AVI, DivX, XviD)  |
| Video Outputs       | <ul style="list-style-type: none"> <li>NTSC/PAL Composite and S-Video</li> <li>YPbPr Video scalable up to 1920x1080i or 1280x720p</li> <li>VGA scalable up to 1024x768</li> </ul>   |
| GUI Languages       | English, French, German, Italian, Spanish, Dutch, Swedish, Hungarian, Czech, Polish, Greek and Turkish.<br>Also supported but requiring an external font are: Traditional Chinese, Simplified Chinese, Japanese and Thai. |
| Interfaces          | USB 2.0 Mini B, SPDIF optical/coaxial, AV multi-connector for analog audio/video  |
| Storage Capacity    | 2.5" Serial ATA HDD (up to 9.5mm)<br>20GB - 750GB   |
| File Systems        | FAT32, NTFS, HFS+ (Mac OS Extended)   |
| System Requirements | PC: Windows 2000/XP/Vista<br>Mac: Mac OS 10.2 or higher   |
| Power Input         | AC: 100-240V, 0.4A, 50-60Hz<br>DC: 5V, 2A   |

## (2) Remote Control

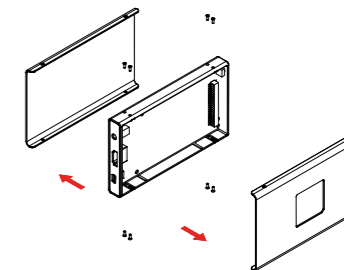
The 44-key remote control has all the functional capabilities to fully control and enjoy your media player.



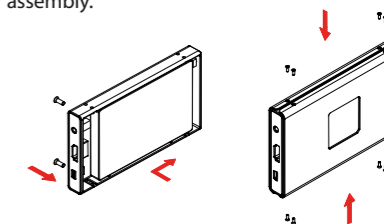
Note: Pressing the Video Output button does not save the video output. To confirm a change, go to Video Settings in the Settings menu, select the corresponding output and press the Home key to save the new setting.

## (3) Hard Drive Assembly

a) Remove the screws for the covers and open the case, so that you have access to the circuit board.



b) Install the hard drive and mount it with the two screws from the bottom through the frame and circuit board. Replace the covers and fasten the screws to finish the assembly.

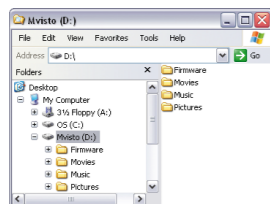


Note: Be careful not to damage any components when installing the HDD!

## (4) Preparing the Media Content

- Connect the drive via USB to your computer.
- Create a single primary partition and format the hard drive using NTFS for Windows, HFS+ (Mac OS Extended) for the Mac or FAT32 for the best compatibility if it will be used on multiple Operating Systems.
- Create the pre-requisite directories for the media player. Create four sub-folders in the root directory, named exactly as follows:

- Firmware
- Movies
- Music
- Pictures



- Copy your media files from your computer and store them on the Mvisto II hard drive. Make sure to store all videos inside the "Movies" folder, all music inside the "Music" folder and all images inside the "Pictures" folder.
- Any data that is stored outside the pre-requisite directories and any files that are not supported or are stored in the wrong directory will not be visible on the TV screen. That data can be accessed again as soon as the drive is plugged into a computer via USB connection.

Note: If USB bus-power is insufficient to power up the hard drive, make sure to also plug in the second USB cable of the USB Y-cable for extra power.

## (5) Media Player

- Disconnect the drive from your computer and remove the USB cable.
- Connect the Mvisto II to your TV by using the included AV cable. We recommend using S-Video for better quality.
- Connect the power supply to the wall socket and plug it into the Mvisto II media player.
- Use the remote control to navigate and access your files on the TV screen. Your media files are sorted by videos, music and photos.



Note: If the LED on the media player lights up green (power on), the device has already been running for a few minutes and is correctly connected to the TV screen but the screen stays black, you might have to change the video output of your media player.

To change the output, press the "Video Output" button until you see the main screen. To store the setting, go to the "Settings" menu, select the correct video output and press the "Home" key to save the new configuration.

## (6) Safety Information

### Power on/off precautions

It is highly recommended to switch the player to standby mode (yellow light) when not in use and remove the power supply when not used for a longer period of time. The player will switch to stand-by mode automatically if idle for more than 30 minutes.

### Location and placing precautions

Do not place any other objects on top of the Mvisto II and do not place the unit on an amplifier or other equipment that can become hot. Avoid positioning it in the following places:

- Locations with direct sunlight, next to radiators or other sources of heat with high temperatures (more than 35° C) or humidity (more than 90%).
- Locations subject to vibration, shock, or with a slope.

### Electricity and power plug

Careful attention must be paid to the following points in order to avoid operational faults and electric shock or fire:

- When removing the power cable from the socket, always pull on the plug and never on the cable.
- Do not touch the power cable with wet hands.
- Never try to repair or modify the power cable yourself.
- If the unit should emit smoke, unusual smell, or noise, switch it off and unplug the power cable.

### Cables

Use only the cables supplied or recommended by your vendor in order to avoid the risk of malfunction.

## (7) FAQ

### Q: No Files Found!

A: This message may occur for several reasons. Please check:

- Does the folder contain any files at all?
- Are the files in the correct folder (e.g. JPGs inside Pictures)?
- Did you create all of the 4 pre-requisite folders and name them correctly?
- Did you format the hard drive using a primary partition?
- Is it working when connected to your computer via USB?
- Did you use the safe removal process on the computer when disconnecting it?
- If none of the above help, turn off the device, remove the power supply and connect it once more.

### Q: No sound

A: By default, the player is using the analog audio output. If you are using a digital amplifier with digital input, go to "Settings" and change the audio output to digital.

### Q: Playback of HD (High Definition) video files

A: This device does not support playback of HD video content.

© 2009 by Macpower & Tytech Technology Co., Ltd. All Rights Reserved  
The information contained in this document is believed to be accurate and reliable. Macpower & Tytech assumes no responsibility for any errors or differences between the product you may have and the one mentioned in this document and reserves the right to make changes in the specifications and/or design of this product without prior notice. The diagrams contained in this document are for reference and may not fully represent the real product.